

Oil spills in
Passaic River
see below

Cops grab 6 lbs.
of marijuana
see pg. 2

Cheerleaders do well
in varsity competition
see Buc Shots pg. 11

Belleville Times

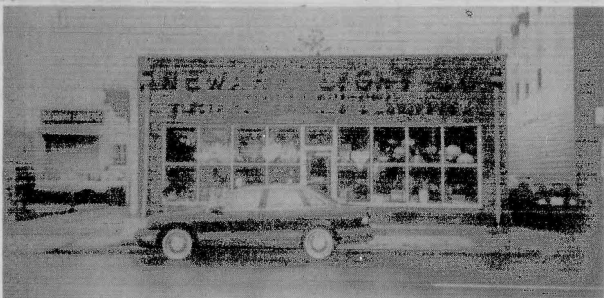
Serving Belleville Since 1909

35°

82nd Year No. 5

An Orechio Publication

Thursday, January 17, 1991



SHINE ON... Newark Light Co., in an attempt to gain permission to expand, will soon negotiate with the Planning Board and area residents.

Planning board, Newark Light to negotiate with residents

By Mike Lazorchak

Bellevillites living near the Newark Light Co., located at 559 Washington Ave., were given a continuance to find representation for negotiations involving the Planning Board, Newark Light Co. and the residents.

The meeting, which took place Jan. 10, was an attempt to settle an appeal filed by Newark Light Co. after the board denied a variance to the company last year.

Director of Planning Robert Ringelheim said the meeting was an

attempt to avoid litigation procedures between the board and the company. Newark Light Co. filed the appeal in Superior Court.

The company applied for the variances last year to expand its facility. However, residents of Floyd Street, located behind the company's lot, protested when the expansion plans did not keep at least 50 feet between the addition and their properties.

According to Board Chairman Joe Doyle, the board has been reviewing transcripts and informa-

tion involving the appeal since it was filed in November.

"Only two members on the current board were on the board at the time of the original application," Doyle said.

According to Doyle, when Newark Light Co. wanted to appeal, the board felt it would be best to review all the material since most of them had not dealt with the original case.

The other aspect related to the appeal was the request for private

(continued on page 3)

Court war a flash in the pan

By Mike Lazorchak

In a case heard in Bloomfield involving two former Belleville commissioners, the result was similar to the toy guns that shoot out a white flag reading, "Bang," nothing.

Charges of housing code violations from Joe Fornarotto, a field representative for Director of Planning Robert Ringelheim, against Kevin Kennedy, Tom Gremont, Bernard O'Connor and Township Clerk Mary Lou Hood, were all dismissed when heard by Judge Carl Siter in Bloomfield Municipal Court.

In addition, Kennedy's harassment charges filed against Fornarotto were also dismissed.

The point of contention in the

cases was that Kennedy claimed Fornarotto was working out of civil title. Although Fornarotto appeared to be following his job description when issuing the summonses, Kennedy's claim rested on Fornarotto's title of field representative, housing inspection.

Belleville does not have a housing code and Kennedy felt there could not be a field representative of a non-existing code.

However, Belleville does have a property maintenance code and that is where Fornarotto's job description is listed.

Fornarotto maintained that he was doing his job to enforce the code.

The cases were heard in Bloomfield due to the conflict of interest posed by Township employees being involved.

According to Rick Salerni, Bloomfield Court Clerk, all the cases were dismissed. This was also confirmed by Belleville Court Clerk Cheryl Chiappaneli.

Officials trying to pinpoint source

Mysterious oil spill covers Passaic River

By Alfred Cook

State and local officials are investigating a mysterious oil spill that arrived on the Passaic River near the Avondale Bridge on the Nutley-Belleville border late Monday evening.

The slick, which appeared at the junction of the two Essex County towns and Lyndhurst in Bergen County between 10:30 and 11 p.m. Monday evening may have come from any of the facilities north of the area, said Sgt. Eric Herklee of the State Police Marine Bureau.

"There are facilities all along there," Herklee said at about 9:40 a.m. Tuesday. "We are going to try to fingerprint the oil and locate the source."

Some attention was being paid to 677,000 barrels of oil off-loaded from the Cissi-Rheinhour barge out of Staten Island at the Riverside Terminal in Passaic, said Marine Patrol Officer James Stewart of that office an hour later.

By 9:30 a.m. Tuesday the oil spill had arrived at Newark Bay, Herklee added.

Stewart said Marine Patrol Officers Patrick McCall and Joseph Schmitt and Sgt. John Connelly representing the State Police Office of Emergency Management, went to the terminal shortly after an odor was reported.

"The Coast Guard inspected that vessel at their facility and everything checked," said Les Jones of the Department of Environmental Protection (DEP). "We are still investigating some

Cutbacks, layoffs are on township's horizon

By Joyce M. Steel

In the newly-born governmental tradition of "less is more" in tax-heavy New Jersey, Belleville Township Manager Bertrand Kendall announced plans to implement a restructuring of municipal government which translates into at least six to ten position eliminations.

In a prepared statement last week, Kendall had good news and bad news. He said some of the cuts may not affect workers, because retirements and resignations have rendered the positions vacant.

However, he warned that the projection of six to ten position eliminations "may be just a starting point."

The township has not announced the specific positions to be cut, but indicated the fire and public works departments would be initial targets.

Kendall said six members of the fire department retired as of Jan. 1, and called the possibility of all those vacancies being filled "doubtful." He characterized Chief Walter Beresford's request for a provision to hire an additional 14 members in much the same way.

"There's no way we can afford to grow," Kendall said, adding that, while public safety and welfare are important issues, budgetary restraints have paralyzed all government functions.

The public works department, Kendall said, will be reorganized in accordance with the new administrative code, a process which could lead to more restrictions and layoffs.

The initial cutbacks should save the township approximately \$250,000 in salaries and perks, Kendall said. However, critics have pointed out that the township dolled out a sum close to that late last

year in hiring Kendall, Town Planner Robert Ringelheim and Town Engineer/Public Works Director Stanley Stires.

Kendall defended the addition of the new administrators, saying the positions are required under the new form of government, and each is functioning well in his duties. He said the township is looking to pare down departments by terminating employees whose positions can be eliminated or consolidated, and it's doing it by the books.

"We have a meeting with Civil Service this week, and will effect these changes in the proper way," Kendall said in a telephone interview Tuesday. "We want to make

sure we follow all the rules with this."

Kendall said notices will be issued to employees, in compliance with the 45-day notice period, beginning next week. He said the first six positions targeted for elimination will be made public after the employees, Civil Service and concerned unions are notified. During eliminations, Kendall said, senior employees will be given bumping rights within their classifications.

Kendall said that, as the council begins to prepare the 1991 municipal budget, it may become necessary to make additional cuts. He

(continued on page 3)



DECISION MAKERS — Mayor Marina Perna and Manager Bert Kendall will institute layoffs.

Songs of the South coming to Belleville Ave. night spot

By Joyce M. Steel

The sight of dozens of area residents, clad in dungarees, cowboy boots and ten-gallon hats, listening to the sounds of a rousing, fiddle-playing, banjo-picking country and western band, may seem a bit unlikely. But it's a scenario that the club owners and managers at the new Rockin'

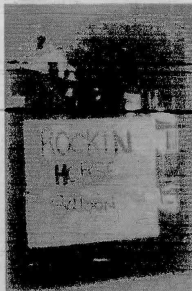
Horse Saloon are counting on.

The club, located at 153 Belleville Ave., is owned by Ralph, Inc., and formerly operated as Legends and Crook's Pub. Recently, renovations were undertaken and the management decided to stray from the usual pop/rock-n-roll stigma to a Country and Western musical motif.

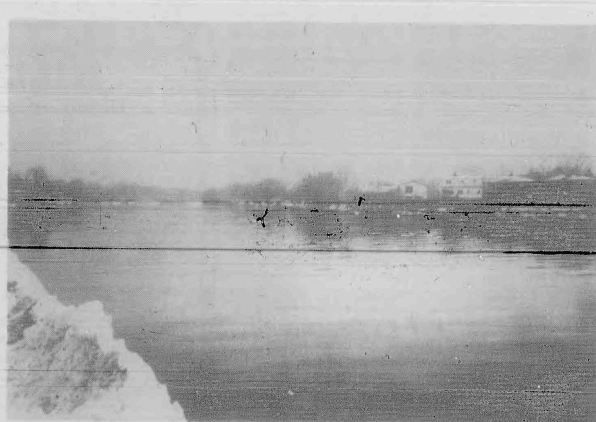
Club Manager Peter DiNicoia declined to comment on the changes made at the Rockin' Horse Saloon. However, he said the grand opening, scheduled for last Friday, was postponed until tomorrow night.

According to broadcast advertisements, the Rockin' Horse Saloon will feature a live band each night it is open, Wednesday through Saturday. The band scheduled for Friday's performance is Lone Wolf, made up of musicians from the metropolitan area.

Several radio personalities from WYNY-FM, the only New York-based station with a Country and Western format, are also scheduled to attend the grand opening, and there will be no cover charge for admission.



COMING SOON — A country & western club on Belleville Avenue will open tomorrow.



TROUBLED WATERS... The Passaic River, near Rutherford, Nutley and Belleville, fell victim to a mysterious oil spill this week.

Two town natives intern

Saint Peter's College in Jersey City placed 138 students, including two Belleville youths, in cooperative education/internship positions in the fall at corporations, financial organizations, businesses and state and federal government offices. Dr. Peter Gottlieb, founder and director of the Cooperative Education Program at the Jesuit college, said that the group was the second largest number of students ever to be placed in positions during the fall season, despite the tough economy.

Luis Estabarez of Belleville worked with American Cyanamid, Inc., while John Tatur, also of Belleville, worked with Computax, Inc.

Co-op students, who earn a salary and academic credits in their full or part-time positions, receive valuable work experience during their college years, providing them with excellent opportunities to

develop on-the-job skills and familiarity with career-related work. The average salary of a co-op student exceeds \$6,000 per year. Saint Peter's College is New Jersey's only Jesuit college and one of 28 Jesuit colleges and universities in the country.

Library Friends offer coupon book

The Friends of the Belleville Public Library are pleased to announce that they are again offering two different discount coupon books for sale as a library fund raiser. ENTERTAINMENT '91 is a discount book for restaurants and entertainment opportunities in Essex and Union Counties and surrounding areas. In many cases, one use of the coupon book will pay for the book itself which is available at the Library for \$35.00.



THE GRASS IS ALWAYS GREENER. Belleville Narcotics Squad members netted six pounds of marijuana Jan. 10 after arresting 28-year-old Louis Morella of Kearny. A search of Morella's home resulted in the seizure of nearly a pound more, officials said. The street value of the confiscated goods is estimated to be \$18,000. Morella was charged with possession with intent to distribute, possession of over five pounds of marijuana, and conspiracy to violate the narcotics law. He was released on \$2,500 cash bail pending a March 6 court date.

Belleville honored by 'Helping Hands'



RECIPIENTS OF THE 'HELPING HAND.' Officials of the University of Medicine and Dentistry of N.J. (UMDNJ) admire one of the three Helping Hand Awards they received recently from the New York/New Jersey Minority Purchasing Council. The awards went to UMDNJ's Special Vendor Programs for contributions to the minority business community. Seated are E. Denise Council, of UMDNJ's Purchasing Dept., left, and Ernestine Watson, UMDNJ-Special Vendor Programs. Standing are John Vivenzio, Dept. of Material Management, and left, Frederick J. Hammond Jr., Belleville, acting senior vice president for administration and finance.

For the fourth straight year, the University of Medicine and Dentistry of New Jersey (UMDNJ) has swept the three institutional-category Helping Hands Awards of the New York/New Jersey Minority Purchasing Council.

UMDNJ's Special Vendor Programs received the awards for their contributions to the minority business community. The awards were presented at the Council's recent annual banquet.

Of the three Helping Hands, the award for leading institution was presented to Frederick J. Hammond Jr. of Belleville, UMDNJ's, acting senior vice president for administration and finance. The award for program coordinator went to Ernestine Watson of Newark, assistant vice president of the UMDNJ Special Vendor Programs. E. Denise Council of East Orange, a coordinator in UMDNJ's Purchasing Department, received the award for buyer representative.

Created in 1973, the Minority Purchasing Council serves as a link between the corporate and minority business communities. Each year, it honors firms and institutions divided into four categories — financial services; manufacturing/retailing; transportation/utilities; and diversified services/government and institutions.

UMDNJ was among New York and New Jersey based businesses, institutions and organizations nominated by the member-firms of the Council for the institutions category. Among others nominated in this category were the City of Newark, the National Broadcasting Network, New York University, Princeton University and the New York Times Company.

"UMDNJ's Special Vendor Programs have been a continuing source of pride to our institution," said Mr. Hammond, who is also UMDNJ's treasurer.

Mr. Hammond noted that UMDNJ's vendor program for small businesses, which includes minority-owned firms, is flourishing when many such programs elsewhere are cutting back. He

attributed this cut-back to the 1989 Supreme Court decision to invalidate the Minority and Women Business Set-Aside Program of Richmond, Va.

The Court's decision nullified the "race" and "gender" categories of Richmond's set-aside program. In response to the decision, New Jersey revised its set-aside regulations by establishing the categories of urban development enterprises and micro-businesses (firms with 20 or less full-time employees).

"UMDNJ acted swiftly to comply with the new state regulations for set-aside programs," said Ms. Watson, who heads the UMDNJ-Special Vendor Programs.

"We are committed to working with businesses based in the communities that are home to, and surround our campuses. The Helping Hand Awards are a measure of our success and it is gratifying to receive them."

The UMDNJ-Special Vendor Programs have been a model for the state since being established in 1986 to insure University compliance with new state legislation creating a Minority and Women Business Set-Aside Program. Based in Newark, Ms. Watson and her staff work closely with UMDNJ's purchasing departments at campuses in Newark, Piscataway/New Brunswick and Camden/Stratford to explore opportunities for small and minority-owned businesses.

In addition to the Minority Purchasing Council, the program has been honored by the National Minority Business Council and the YM/YWCA of Newark and vicinity.

The N.Y./N.J. Minority Purchasing Council's annual awards dinner was held November 14 at the Meadowslands Hilton Hotel, Secaucus, N.J. In a message to the Council, Governor Jim Florio stated, "Today, we know that what's good for small business is good for all of us. And, so long as we have a healthy atmosphere for minority-owned businesses to grow, we are that much closer to the better future we all want."

Golden Comments

By Jim Golden

Tough times ahead for New Jersey are the prognosis for Jerseyans, and the analyses of state and national statistics indicate important trends ahead, based upon the observations of Norman J. Glickman, an economist, the director of the Center for Urban Policy Research at Rutgers University.

Predicted upon observation of important trends which lie ahead and the world situation the results aren't encouraging. . . that stands for "recession," a word that until recently few in government or the private sector wanted to use. They used euphemisms, like "downturn" and "slowdown" instead. It is now time to face reality and say that the economy has sunk into a recession.

This will mean fewer jobs and less production, lower living standards and more welfare. Hopefully the recession will not be a deep one, however, it will cause pain to many New Jerseyans.

Forecasts indicate: "The New Jersey economy will stay in recession throughout 1991, as 62,000 more New Jersey residents will be unemployed this year. The unemployment rate will average 6.4 percent, up from 5.0 percent last year."

"The hardest-hit sector will be manufacturing, where nearly 42,000 jobs will be lost this year. This continues a long-term decline that began in the 1950's. By 1994, there will be 557,000 factory workers in the state, down from 635,000 in 1990."

"Total nonagricultural employment will fall by 12,500 jobs in 1991 and will grow slowly in 1992. In 1992, 22,000 jobs will be added to New Jersey payrolls, a growth rate of only six-tenths of one percent. Somewhat better, but still modest, gains of 50,000 jobs likely in 1993 and 1994."

"The non-manufacturing sectors of the economy should do better than construction and manufacturing: transportation, communications, and public utilities will have 3.0 percent more employment; finance, insurance and real estate will grow by 4.1 percent, and services employment will increase by 3.2 percent during 1991. On the other

hand, wholesale and retail trade (minus 0.1 percent) and government jobs (minus 1.5 percent) will have less employment this year."

"Construction employment, which has been falling over the past two years, will dip by an additional 10,000 workers this year and another 7,000 in 1992, before recovering in 1993 and 1994."

"A brighter spot in the economy is personal income, which forecasts predict will grow by 3.4 percent in 1991 and 5.0 percent in 1992. On a per capita basis, personal income will grow by 3.5 percent in 1991 and 5 percent in 1992. However, when inflation is taken into account, per capita income will decline by 0.8 percent this year (following a 1.8 percent decline in 1990) before resuming its upward trend in 1992 (when it will rise by 2.1 percent)."

"Inflation will decline this year, from 6.0 percent to 4.7 percent, another piece of good news. In addition, New Jersey's inflation will be nearly one percentage point less than the nation's."

This is not a pleasant forecast which indicates unsettled economic times. Many questions concerning the economy that could alter things for better or worse. Banking institutions are in parlous shape; those that have money to lend are not letting companies and people with reasonably good credit borrow. Should more loans be offered, more investment could take place and more jobs would be created.

The Federal Reserve Bank recently indicated the difficulty that the economy is in and has lowered interest rates to pump up the economy. A peaceful solution of events in the Middle East would mean a decline in oil prices — a plus for the U.S. and New Jersey economies. A disruption of oil supplies would mean a much deeper recession.

It all boils down to the reality that the glory days of the 1980's are over. Little of this is good news for those hoping for a quick rebound or the state government looking for an economic shot in the arm for tax revenues. . . it isn't good news for the unemployed and those on limited fixed incomes in coming years.

Seton Hall Prep gives honors

Seton Hall Preparatory School is proud to announce that the following residents of Belleville attained scholastic honors for the first trimester of the academic year.

Those earning First Honors with an academic average of 4.0 or above include: Raymond Escorpizo, Louis Messano, Deven Patel and Ronald Vinluan.

Those earning Second Honors with an average of 3.5 or above include: Victor Afanador, Othello America, John Burns, Eugene O'Brien, Patrick O'Brien, and Michael Pannullo.

The following students are commended for earning an average of 3.0 or above: Richard Gabencion and Christopher Ricci.

Plaza Bootery
Quality Shoe & Handbag Repairs
MOST WORK DONE WHILE YOU WAIT
483 Franklin Ave., Nutley
667-8984

FOR ALL YOUR FINANCIAL NEEDS

WHY NOT CHECK WITH SECURITY!

- | | |
|--------------------------------|---------------------------------|
| ✓ CHECKING & SAVING ACCOUNTS | ✓ 24 HOUR AUTO LOANS |
| ✓ CERTIFICATES OF DEPOSIT | ✓ BUSINESS & COMMERCIAL LOANS |
| ✓ OVERDRAFT CHECKING | ✓ MORTGAGES |
| ✓ CREDIT CARDS | ✓ TRUST AND INVESTMENT SERVICES |
| ✓ HOME EQUITY & PERSONAL LOANS | ✓ IRAs |
| ✓ HOME IMPROVEMENT LOANS | ✓ SAFE DEPOSIT BOXES |

SECURITY NATIONAL BANK AND TRUST COMPANY
OF NEW JERSEY
"Service With A Personal Touch"

Frederick J. McGrath, A.V.P.
37 Bank Street
Newark, N.J.
201 643-5700
Joan Gilmore A.C.
431 Kingsland Street
Nutley, N.J.
201 661-5121

Law T. Smith Jr., Exec. VP
Trust & Investment Office
Bloomfield, N.J.
201 228-9770
Joanna M. Poulson, A.V.P.
213 Harrison Street
Nutley, N.J.
201 661-5110

Regal Carpet WHOLESALES
Family Owned and Operated Since 1957
Push DuPont Certified STAINMASTER
ONLY \$12.99
Per Sq. Yd. (Includes Installation)
Many Styles & Colors Available
Real Hardwood Buy Wholesale
Selling For Retail
(908) 742-0727
1001 Route 100, Suite 100, Nutley, NJ 07110

NUTLEY FOOT CARE CENTER
Dr. Robert Lardiere
Surgeon - Podiatrist
"Complete Foot Care for The Entire Family"
230 Centre Street
Nutley
667-5070

WILLIE'S Diner - Restaurant

Try Our Delicious Satisfying
11 a.m. - 10 p.m.

Italian Specialties
Steaks & Chops

Homemade Pastries • All Baking Done On Premises
CHILDREN'S MENU AVAILABLE
Complete Dinner Menu & Ala Carte
Special Breakfast Menu 6 a.m. - 11 a.m.
Daily Businessman's Lunch 11 a.m. - 3 p.m.

OPEN 24 HOURS - 7 DAYS
9 State St. Bloomfield • 748-7414

It's time for an insurance check-up

AUTO INSURANCE
no surcharges for 1st time uninsured motorist
HOME - TENANT SNOBOWBLE

WE ARE SPECIALIZING IN BUSINESS INSURANCE... SMALL OR LARGE COMPANY FREE QUOTE.

TROISE INSURANCE AGENCY
WHERE QUALITY COVERS YOUR LIFE
172 Washington Avenue, Belleville
Mon. - Fri. 9 AM - 5:30 PM • Sat. 9 AM - 12 PM • 759-4100

Belleville Transmission & Auto Repair

FREE 5 POINT TRANSMISSION CHECK!!!

- FLUID LEVEL
- FLUID CONDITION
- LEAKS
- ROAD TEST
- LINKAGE

TRANSMISSIONS
from \$475.00* incl. Parts
*Ford C4, GM 350 & Labor
FREE ESTIMATES!

190 WASHINGTON AVE. BELLEVILLE • 759-5123
CORNER OF RUTGERS ST.
MAJOR CREDIT CARDS ACCEPTED

Orechio calls for bill passage

State Senator Carmen A. Orechio, reacting to the death of four children who died as the result of a Jan. 6 fire in Newark, this week called for swift passage of his bill, S.1938, which would ban the use of portable oil-fueled heaters throughout the state.

Sen. Orechio, (D-30th Dist.), who has sponsored numerous bills pertaining to home fire safety measures — such as portable oil-fueled heaters — “expose their users to the dangers of fire and to combustible products” and that their use should “therefore be prohibited.”

According to the Essex County legislator, he was both “saddened” and “outraged” over the youths’ deaths and labeled the loss of their lives “senseless.”

“This tragedy, in all likelihood, would not have occurred had my bill been law,” Sen. Orechio said noting that under terms of his bill it would be illegal for New Jersey residents to use oil-fueled portable heaters in either their homes, condominiums or apartments. Sen. Orechio’s bill, S.1938, had previously been passed in Senate by a 21 to 13 vote.

According to authorities, the fire — which also resulted in the displacement of 38 people who lived

in an adjoining structure — was caused by a portable kerosene heater — which continued to burn even after it was turned off and “flared” out of control. The four children, who were left unattended by their aunt, were trapped in an apartment directly above the room where the fire started officials said.

Presently, the City of Newark has an ordinance which bans both the use and sale of these types of heaters, however, city officials contend that the law is not being “effectively” enforced because residents are able to purchase the heaters elsewhere and bring them back to Newark.

According to Sen. Orechio, his bill would save countless numbers of lives each year. Violators would be subjected to a monetary penalty of not less than \$50 and no more than \$100 for each violation and be fined for each day they do not comply.

“What I’m most concerned about is saving lives,” Sen. Orechio said, who is also chairman of the State Fire Safety Commission and the former public safety director for the Township of Nutley.

Anytime lives are lost as the result of a fire it’s a tragedy,” Sen. Orechio said, “but when four innocent children die in a fire — a fire



Sen. Carmen Orechio

which could have been prevented had the ban of oil-fueled portable heaters been in effect — it hurts that much more because their deaths were avoidable.”

Sen. Orechio also blasted apartment building landlords who allegedly do not supply their tenants with the proper amount of heat during the cold winter months.

“It’s because of the actions of these landlords that people will risk their safety, and the safety of their family, and use these dangerous devices in order to stay warm,” Sen. Orechio said.

An Orechio Publication Committee selects its parade chair

The West Orange St. Patrick’s Day Parade Committee has announced the selection of Belleville resident Bill Healy as Grand Marshal for the 40th annual St. Patrick’s Day Parade. The West Orange Parade, one of the state’s largest, will take place on Sunday, March 10 at 12:00 noon.

Healy is a retired Board of Education employee and bartender. He has been President of The Irish American Society of the Orange for the past three years. Healy is a member of the friendly sons of the Shillelagh, the McGovern Association; the McLoughlin Association; the Garden State Celtic Club and the New Jersey Shore Irish Association.

Healy was born in Kells Carnaross, County Meath, Ireland. Married to the former Anne Dunn, Healy is the father of five children. Monsignors John Fahy and Michael Kelly were appointed as Parade Chairmen.

Any group interested in participating in the parade must register with the Parade Committee by contacting the Parade Chairman, Frank McEnery at 535-2880 or the Parade Adjutant at 325-2542.

Thursday, January 17, 1991

Belleville Times—3

Berardi to exhibit

Belleville resident Vince Berardi, an artist well known for his dominant portrayal of women in fashion, will be exhibiting his drawings at the Nutley Public Library throughout the months of January and February.

A fashion student at the Fashion Institute of Technology in New York, Berardi is establishing a strong clientele with his clothes designs, which he offers for personal order/freelance; bridal; up and coming bands and solo artists.

He has always aimed to reach out and stimulate young people who desire a creative difference in the fashion and image of women, and his ultimate goal is to have a collective combination of artwork and fashion in his own store.



Vince Berardi

Irish-Americans meet tonight

The next meeting of the Belleville Irish-American Association will be on January 17 at 7:30 p.m. at the Knights of Columbus on Bridge Street.

The Association in its first year, has grown to a 75 plus membership.

At the meeting they will welcome new members who want to join. There will also be a discussion on the upcoming ‘Irish Wake’ planned for May 18, 1991. Refreshments

and coffee will be served on the meeting night.

The officers through 1991 are James Whelan, President; Kevin Kennedy, Vice President; William Cook, Secretary; George Lynch, Treasurer; Mary Lou Hood, Trustee; Patricia Pisano, Trustee; and John Tighe, Trustee.

Again, all are welcome to come to the meeting on January 17, 1990 at 7:30 p.m.

Dennis Centanni wants to thank you for your support and patronage the last year and wants to announce that on January 1, 1991 he'll be renaming his store

CENTANNI

Italian & American Deli

82 Overlook Avenue, Belleville • 751-3910

(formerly DiVito's)

JANUARY SPECIAL

3 ft. SUB

\$30 and get

Free Bottle of 64 oz. Coke or Pepsi

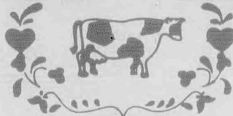
6 ft. SUB

\$55 and get

Free Bottle of 64 oz. Coke or Pepsi

Order Party Sandwich Platter and get 2 lbs. of Potato or Macaroni Salad FREE!

COUNTRY FOLK ART SHOW & SALE



January 25 - 26 - 27, 1991
Edison, New Jersey

AT THE BEAUTIFUL NEW

RARITAN CENTER EXPOSITION HALL

FROM: NJ Turnpike, exit #10 To West on I-287, exit at Rt. #514 (one exit south of NJ Trpk.) To Rt. #514 to Garden St. Pkwy. N. - exit #127 - to 440 W. to I-287 Raritan Center Pkwy. & Expo Hall Garden St. Pkwy. S. - exit #129

THE LEADING FOLK ART SHOW IN THE NATION FEATURING OVER 100 QUALITY FOLK ARTISANS FROM ACROSS THE COUNTRY Friday evening, 5 p.m. to 9 p.m. Adm. \$6.00 (Early Buying Privileges) Sat. & Sun. 10 a.m. to 5 p.m. Adm. \$4.00 Children under 10 Adm. \$2.00

Grained frames and boxes; Scherenschnitte; baskets; pierced lamp shades; country and period furniture; Windsor chairs; grained and painted furniture; rag rugs; samplers; teddy bears; redware; spongeware; salt glaze stoneware; theortams; trakturs; linware; blacksmith; carved toys; signs; weather-vanes; decoys; Shaker boxes; pantry boxes; folk art watercolors; stenciling; whirligigs; floorcloths; dummy boards; quilts; country textiles; fireboards; herbal; wreaths and potpourri; candies; braided and hooked rugs; and all country needs for sale.

BETTY LONG Rhonda Blakely Folk Art Shows 111 Oranville, MI 48462 (313) 634-4153 (313) 634-4151 P.O. Box

ARE YOU WORRIED ABOUT...

1. WEIGHT GAIN
2. HIGH CHOLESTEROL
3. HEART DISEASE
4. DIABETES
5. BLOOD PRESSURE

Come and hear Dr. Paul Stefanelli and Mr. Sam Calello speak on these subjects and the Nanci Products.

Studies have shown that soluble fiber captures fat before it can do harm and turn it into UNWANTED FAT in the body.

NO CHARGE

Tuesday, January 22, 1991 • 7:30 p.m.

AT THE OFFICES OF

DR. PAUL STEFANELLI

567 Franklin Avenue, Belleville, N.J. • 450-1003

Seating is limited, so please call and reserve your seat early.

Newark Light spawns chagrin

(Continued from page 1) negotiations made by Newark Light Co. The Jan. 10 meeting, while accepting to negotiate with the company, did not grant the request.

Instead the board decided to keep negotiations open to all parties, according to Doyle.

“The board decided to give the residents a month to find council,”

Layoffs, cutbacks projected for '91

(Continued from page 1)

attributed the severe lack of funding projected for this year’s budget to the state’s revised Cap Law, which restricts the township from spending over 4.5 percent more than it did last year for services such as garbage disposal, although fee hikes may have represented a large percentage.

“Nobody in government likes to lay off employees,” Kendall said in his statement, which echoed the sentiments of Mayor Marina Perna’s prepared statement, released along with Kendall’s.

“I deeply regret any individual ramifications which will result,” Perna said, “however, it is my sincere hope that the economy will be on an upswing soon and that the impact is only temporary.”

Ringelheim said, “or they will have to choose two residents from amongst themselves to represent them.”

The negotiations will continue at the next meeting Feb. 14.

Although there is a lot of ground to cover, Doyle is hoping the negotiations can avoid the litigation procedure.

“The situation is rather tenuous but moving forward,” Doyle said.

Why wait for your federal income tax refund?



- receive your refund anticipation loan within a matter of days
- available whether we prepare your return or not

H&R BLOCK

125 WASHINGTON AVE., BELLEVILLE • 751-3836

155 FRANKLIN AVE., NUTLEY • 235-1000

299 GLENWOOD AVE., BLOOMFIELD • 743-0898

OPEN 9 AM - 9 PM Weekdays 9 - 5 Sat. & Sun.

APPOINTMENTS AVAILABLE

Master Card, Visa, Discover & American Express Accepted
Speakers for your club or civic group available free of charge.
Call any office for information.

AVAILABLE
JANUARY 18th

mo' better blues



PALMER VIDEO
More Movies
When You Want Them.

BELLEVILLE
189 Washington Ave. • 450-4555
OPEN 7 DAYS 10 AM TO 10 PM



RENT ANY 2 MOVIES
GET THE THIRD

FREE

Rent any 2 movies at the higher price and receive a third rental of equal or lower value free. All films must be rented the same day. While supply lasts. Valid at participating locations only. Center to be contacted with any other offer. Exp. 12/31/91.

EVENING 3

SUN. Thru WED.

THE MOST 99¢ RENTAL

OUR OPINION

Those Who Care

As silently as sunrise comes
the days flow into years;
and some are filled with happiness
and some are drenched in tears.
But always it is good to know
that there are those who care;
who may today, lift up your name
with love in fervent prayer.
— Loraine Mueller

Environmentalist slush fund

Now the Republicans are crazy!
A Republican "task force" — that is, a group of legislators, their aides and dependents, and rag-tag environmentalists — have come up with a program to have middle-class folks pay higher taxes so the state can pay absurdly high funds for privately owned land. And these Republicans have nerve to criticize Jim Florio!

Assemblywoman Maureen Ogden and Assemblyman Robert Martin, Republicans from Union County, want taxpayers to fund directly, or through another costly bond issue (deficit spending, in other words) a device — affectionately known as "a stable source of funding" — so that land-rich farmers can become money-rich from selling off their unused and generally unproductive land at a big windfall for themselves and, consequently, further state taxes for Jersey middle-class folks.

Yes, and some of the land purchased by the state would be from land-rich wealthy folks who have acres and acres to get rid of for purposes of buttressing their cash-flow. Hmm, we wonder how many of Assemblywoman Ogden's rich friends have unused "farm" land which they wish to unload.

Creating new or higher taxes or floating costly bond issues (and bonds must be paid with taxes, to satisfy annual principal and interest charges) by Republicans to subsidize land purchases is nothing less than a welfare program for the rich, and it should be exposed as such.

If some folks want to donate their unused, unproductive under-utilized land to the state government or to the federal government or to county government or even to dear old Bloomfield, God bless them. They will become memorialized and probably have a statue built on their donated land.

Government, however, has no business getting into further purchases of open spaces, green or brown or otherwise, when it has a difficult job already taking care of its present public lands.

Oh yes, as the state would gather in more land, it would be forced to hire more employees — including high-priced bureaucrats in Trenton — to maintain it.

The Republican "task force" is so much fluff, an attempt by the G.O.P. to cozy up to activist environmentalists who would, if allowed, have all private property become the domain of big government.

Whose Bill of Rights?

Thought-police are about again in New Jersey: This time they object to the praiseworthy tour nationwide of the Bill of Rights — sponsored by Philip Morris Companies Inc. — ironically enough, the same Bill of Rights that gives Americans the right to assembly and the right to protest. No Bill of Rights; then no antismoking groups protesting the Philip Morris patriotic and historical endeavor.

Philip Morris produces and sells other than those accursed cigarettes, including Kraft Foods food and Miller Brewing Co. beverages. Kraft Foods makes delicious — and eatable — low-cholesterol cheese substitutes and Miller Lite is the first and still the best-tasting of "light" beers. So what more do these police want?

It is American as Mom's apple pie for folks to rise up in protest, against everything from Florio taxes to Madonna's body exposure. So America — and, praise the Founders of our Republic and the Framers of our Constitution — can and will withstand this most recent assault by self-righteous antismokers. America will survive.

Good heavens, could you imagine what life would be for nonsmokers if the smokers suddenly stopped their sinful habit and the federal and state governments were denied their high excise taxes on "sin"?

At any rate, we urge Bellevillites — smokers and nonsmokers — to visit the Bill of Rights exhibit in Morris Township December 13 through December 17. Both groups should be thankful of those wise men who wrote and then in assembly ratified these first Ten Amendments to the Constitution.

Meanwhile, congrats to Philip Morris — the cigarette producer, the Lite producer and that cheese substitute producer — for investing their corporate dollars to help us become aware how valuable these Rights are ... for smokers, for nonsmokers, and for those of us who believe folks have a right to a seat in either section.

YOUR OPINION

A watery controversy

To the editor:

Governor Florio, in the near future will have to decide whether the taxpayers of New Jersey will have to ante up some \$300 million as their share of the \$1.2 billion flood tunnel boondoggle. Construction is expected to take about 10 years, and the final cost no doubt will about triple by then. In addition we will be saddled forever and ever with the maintenance of the 39 ft. diameter concrete pipe, primarily conceived to provide protection from the next "100-year" flood (if it ever occurs). What else will it do? Well, for starters, during the ten years construction phase, dozens of towns and villages will be subjected to the ordeal of hundreds of trucks, hauling thousands of tons of rock and dirt through their neighborhoods, undoubtedly doing considerable damage to their roads, in addition to putting up with the racket and pollution.

I understand the outlet will be equipped with a shut-off gate, to be opened when this "long expected 100-year flood" occurs. In the interim the tunnel will lie "dormant." Apparently the engineers are aware that the tide comes in twice a day, and without this shut-off gate to shut the thing down, at high tide, Newark Bay could wind up in the center of New Jersey! What a delicious idea!

To be serious again, the most devastating effect of the project is the very real possibility our fresh water aquifer serving this region will be seriously disturbed, perhaps even destroyed in the process. ... look what happened since the Corps of Engineers got through digging all those canals "to improve" Florida. That state is now suffering a very serious water shortage!

Yes, there is a flooding problem in the Passaic River basin because the area has been extensively paved over; a good example is the Willowbrook Mall. Also, homes have been built, encroaching the river. ... but what's done is done, and placing blame will not correct the problem.

Testifying as a concerned citizen at the hearing concerning the flood tunnel, chaired by the Hon. Congressman Van Wagner in Trenton recently, I proposed that for starters a concerted effort must be made to clear the rivers and tributaries of the debris accumulated over the years. Next, they should be dredged, lowering the river bed some 4 to 5 ft.

Doing this, will increase the capacity of the rivers to accept water tremendously, in fact creating an oddly shaped reservoir. If at some point in time it becomes desirable to retain the water in the river, instead of it continuously emptying in the Bay, at some place down-stream flood gates could be installed (or locks), to be opened (at low tide) to lower the water table, in anticipation of whatever "Mr. G." predicts to expect the next day(s).

This letter is written after hearing Governor Florio's proposal to "prime the pump" as he puts it. I pray he is not going to prime it with the flood tunnel. With 24 municipalities in the State's most populous counties, Bergen, Essex and Hudson having passed resolutions opposing the flood tunnel project, in addition to some 90 organizations, including environmental groups, passing it over their objection, the \$2.9 billion tax package the Governor foisted on us, will seem like a minor irritant in comparison. ...

Cornelis P. Vander Zwan

Pray for peace

To the editor:

Pray for our men and women soldiers in Saudi Arabia every morning at 10 o'clock.

Thank You,
Edith Graziano

Talking back to council

To the editor:

Jim Messina's recent letter to our two weekly newspapers stated he "would like to correct some facts." However, instead of facts, Messina's letter was a combination of auto-biography, true confession, and personal attacks.

The only fact he presented was that Belleville's Code Enforcement Official is his cousin, Councilman Messina. It is also a contractor, should realize he now has another conflict of interest. His construction jobs, especially the renovation of his own tavern, should be inspected by an outside agency.

Messina's letter verifies the fact that Belleville did not get a change of government, it simply returned the old regime to power. The old crew is now spending our tax dollars like drunken sailors. In just six months in office, Messina and his fellow councilmembers have raised taxes by 1.5 million dollars. On August 30, 1990, with only four months remaining in the fiscal year, they increased the Municipal budget by \$869,522. They restored \$643,000 to the Board of Education, and every penny went for salary increases, nothing for the children.

While many Belleville residents are getting laid off, and as the State and County slide deeper into a recession, Messina and Council continue to spend, spend, spend. Slowly but surely, Belleville taxpayers are realizing that they were duped into their third "change of government" in 28 years. Keep providing your "facts" Jim, and they'll soon be ready for the fourth change. Perhaps in your next letter you can identify your other cousins or relatives on the town payroll.

Vincent J. Frantantoni

More about meter maid

To the editor:

In last week's Belleville Times you had a letter by a Mr. Book about the meter maid, Ms. E. Nye. Here is a person who is supposed to write tickets for the outdated meters we have in town and street cleaning. I have seen her drive by cars that are parked for hours and not write one ticket. She has destroyed Washington Avenue by her attitude to people. She has driven more people out of Belleville with her good will. I see her in the coffee shops and parked in lots more than on the road.

I hope the council looks into abolishing her job. We do have enough police to write tickets and are a lot more compassionate to people and shop owners. Also, we are ahead of the game with her? How much does she make a year? Does she write that much in tickets? There will be people who will write that she is just doing her job; not when you leave certain people alone. She is bad for the businesses and bad for Belleville.

Kevin G. Kennedy



By Frank Orechio

● THESE DAYS Essex County Executive Tom D'Alessio is probably wishing he were back wearing his old sheriff's badge. He now confronts financial problems like he never dreamed. According to his financial advisor, the current county budget appears to have a shortfall of \$50 million.

In order not to raise county taxes, D'Alessio will need to cut expenses \$84 million, \$50 million to make up the shortage he inherited and another \$34 million to replace a one-time income used up by the previous administration.

Meanwhile, to contain expenses, D'Alessio has ordered a purchasing freeze, overtime elimination and an employee freeze. D'Alessio has inherited a county

eliminate a number of upper echelon jobs together with the perks those positions command. Good luck, Tom.

● MY RETURN trip to West Palm Beach via Eastern Airlines. And what a homecoming it was in West Palm Beach. At the airport departure lounge, I experienced a "family" reunion joy. There was Senior Supervisor Jane Semelsberger, Passenger Agents Judy Castro, Joe Vattiant, John ?????? and Supervisor Chris Bergeron — a group of efficient, caring EAL employees.

In the Inosphere Lounge (members only), 10-year veteran Debbie Maynard was serving the drinks and Hostess Belinda Metcalfe was logging in the new arrivals.

These names add up to super service. If you travel via Eastern and depart from West Palm Beach, remember these names. You'll be happy you did.

The icing on the cake was boarding the 727-200 aircraft only to find an old friend, Senior Attendant Ron Brennan in charge of the cabin crew.

Ron is something else. He is Mr. Congeniality — friendly and caring, he makes you think you are the only person on the aircraft — spoiling you with attention-attention-attention.

● "COUNTY GOVERNMENT" taking layoffs. No, this is not a quote from the Essex County Executive — it is a headline in Sunday's Palm Beach newspaper. "I think we will be talking layoffs this year; at this stage, everything is on the table (without raising taxes). The only answer left is reductions," observed Palm Beach County Administrator Jan Winters.

So — government financial problems seem to be universal. Government service, once a source of employment security, has lost its invulnerability as public officials at every level face the same economic downturn already taking a toll on private businesses, including our own.

● NUTLEY SAVINGS Bank appears to be at the mercy of federal regulators. According to Executive Vice President Michael Shaughnessy, "The bank is significantly undercapitalized (\$15 million) at present and cannot be recapitalized without some sort of government



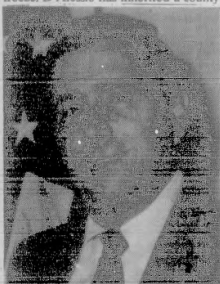
John Kelly
Pres. Nutley S & L

assistance. Bank officials are fully cooperating with federal regulators.

"Management fully expects the bank will be purchased in the not-too-distant future. Third quarter loss was \$8.5 million dollars. Government officials rejected several plans submitted for restructuring — all were turned down."

● U.S. SENATORS Bill Bradley and Frank Lautenberg were wrong-headed in opposing President George Bush's request for authority to use military force, if necessary, to oust Saddam Hussein's Iraqi troops from Kuwait.

● CREDIT Governor Jim Florio's



Tom D'Alessio

structure of 6500 employees. D'Alessio's Transition Team has recommended a reduction of 1500 employees.

To obtain a quick fix on the financial emergency, D'Alessio has appointed an Investigating Committee comprising Dr. John Pettillo, Cardell Cooper, Al Koppe of Bell Telephone and N.J. State Democratic Chairman Phil Keegan. The unpaid committee will review the budget and also will focus on property leased by the County.

The county government structure consists of eight departments. Consolidation of departments offers an opportunity to



Joseph Salema

Chief of Staff, Joseph Salema, for cutting through governmental red tape to get permits for the Maryland-based PG&E-Behchtel Generating Company, allowing the company to proceed with plans to build high-tech clean energy projects costing \$900 million dollars that would employ 1,400 people.

Belleville Times

Serving Belleville Since 1909

U.S. PS 685-250

Publisher: Frank A. Orechio

Assistant to the Publisher:

Arnie Ziem

Published Every Thursday

At 155A Washington Ave.

Belleville, N.J. 07109

Second-Class Postage Paid

At Newark, N.J.

Postmaster: Send address changes

to: The Belleville Times

155A Washington Ave., Belleville, N.J. 07109

Editor: Joyce M. Steel

Social Editor: Helen Maguire

Sports Editor: Michael Lambert

Advertising Mgr: Diane Federico

Art Director: Celeste Lombardi

All departments call:

759-3300

Fax: 467-3904

Annual Subscription \$14.00

Senior Citizens \$7.00

(2886)
Anthony Vivinetto
GENERAL AGENT
359 Centre Street
NUTLEY
Allstate
Allstate Insurance Company

OBITUARIES

Thomas Nisivoccia, 59

Thomas Nisivoccia, 59, of Nutley and Wildwood Crest, who has been a captain in the Belleville Fire department, died Jan. 13 in the Mountaineer Hospital, Glen Ridge.

A Mass was offered Jan. 16 at Holy Family Church, Nutley, after the funeral from the Kieran Funeral Home, Belleville.

Mr. Nisivoccia had been a fire captain in Belleville for 33 years before retiring in 1988. He was a Navy veteran of the Korean War.

Mr. Nisivoccia was a member of

Belleville Council 835 of the Knights of Columbus, the Livingston Elks and the Greater Wildwood Crest Italian Club and had been president of the Columbus Institute, Belleville.

Born in Newark, he lived in Belleville before moving to Nutley seven years ago.

Surviving are his wife, Barbara; two sons, Thomas and Glenn; two sisters, Mrs. Grace Brasser and Mrs. Michela Godino, and two grandchildren.

Amelia Delia, 96

32 years ago.

A Mass for Mrs. Amelia Delia, 96, of Verona was offered Jan. 11 in Our Lady of the Lake Church, Verona, following the funeral from the Gaita Memorial Home, Little Falls.

Mrs. Delia died Jan. 9 in St. Barnabas Medical Center, Livingston.

Born in Orange, she lived in Belleville before moving to Verona.

Marie Carbone, 75

Private services for Miss Marie Carbone, 75, of Belleville will be held under the direction of the Irvine-Cozzarelli Memorial Home, Belleville.

Mrs. Carbone, who died Jan. 11 in her home, was a seamstress at the Spitta Coat Factory, Newark, for many years before retiring 12 years ago.

She was a member of the Bloomfield Senior Citizens and Local 220 of the International Ladies Garment Workers Union, Newark.

Born in Belleville, she lived in Newark before returning to Belleville 20 years ago. Surviving are two brothers, Anthony Carbone and John Carbone, and a sister, Mrs. Grace Daniele.

Joel Trimarco, 45

Joel Joseph Trimarco, 45, died Jan. 11 at his home in San Francisco. Mr. Trimarco was born in Newark and lived in Belleville before moving to San Francisco.

For the past five years he was self-employed as an interior decorator. Prior to that he worked for MCM in Los Angeles and Prudential Bache Securities in New York City.

Mr. Trimarco was also an air-force veteran of the Vietnam War.

A funeral service will be held at 10:30 a.m. Jan. 12 at the S.W. Brown and Son Funeral Home, 267 Centre St., Nutley.

Surviving are his mother, Gertrude; his brother Richard W.; two nieces, Beth and Andrea and a nephew, Michael.

An Orechio Publication

Arthur Peterson, 85

Memorial services for Arthur W. Peterson, 85, of Hightstown, retired as the president of Continental Electric Company Inc. in Newark and a leader in many civic and service organizations, were held Jan. 11 in Smith and Smith (Suburban), Springfield.

Mr. Peterson died Jan. 9 in his home.

He worked with Continental Electric Company Inc. for 27 years before retiring as president in 1971. Mr. Peterson was a 1926 graduate of Pratt Institute in New York City, and received the Alumni Medal from the school in 1965. He also was awarded a Bronze Award from the Boys' Club of America for many years of service with the organization.

Mr. Peterson was a member of the American Society of Swedish Engineers, the American Swedish Historical Foundation, the John Ericsson Society of New York, the Seamen Center of New York City, the Swedish American Athletic Club, the Swedish Chamber of Commerce of the U.S.A. and Lodge 95 of the Viking Torvald.

He also was a member of the American Institute of Electrical

Engineers, the Pratt Institute Engineers Association, the Fidelity Union Trust Co. in Newark, the New Jersey State Chamber of Commerce, the Newark Chamber of Commerce, the board of directors of the Ironbound Manufacturers Association of Newark and the Robert Treat Council of the Boy Scouts of America.

He belonged to the board of trustees of the Clara Maass Memorial Hospital, the Ironbound Boys' Club, the New Jersey Hospital Association and the Salvation Army in Newark.

Mr. Peterson was president of the board of trustees of the First Lutheran Church of East Orange, vice president of the board of trustees of Upsala College in East Orange and director of the Newark Kiwanis Club.

Born in Newark, he lived in Belleville, South Orange and Short Hills before moving to Hightstown several years ago.

Surviving are his wife, Helen; a daughter, Mrs. Ellen Morris; three sons, Donald, Richard and Robert; 13 grandchildren and three great-grandchildren.

Thomas E. Freh, 57

Thomas E. Freh, 57, of Belleville died Dec. 29 at Clara Maass Medical Center.

Born in New York City, he lived in Arizona before moving to Belleville seven years ago. He had been a butcher and a butcher instructor with the Arizona Correctional System.

He is survived by his wife, Lorita

Rae; four sons, Kevin and Brian of Phoenix, AZ, Thomas of Philadelphia, PA., and Billy of Belleville; two daughters, Cheryl of Phoenix, AZ, and Sonja of Lakewood, NJ., and a sister, Rosemarie Wagner of Belleville.

A service will be offered today at 10 a.m. at the Blomdi Funeral Home, Nutley.

Bellevillite is chiropractor

Leonard M. Russo, a 1990 graduate of Life College of Chiropractic, received his New Jersey State license to practice chiropractic.

Dr. Russo is a 1983 graduate of Belleville High School and earned his undergraduate degree in the

pre-chiropractic program at Belleville College. He is the son of Rocco and Carolyn Russo of Greylock Parkway, Belleville.

Dr. Russo is presently practicing with Avondale Chiropractic Associates, located on Washington Avenue in Nutley.



Mountaineer Hospital Serves Gourmet Low Calorie Lunch — to participants who recently completed the hospital's thirteen-week Behavior Modification Weight Control Program. Pictured during the lunch is program participant Fran Vindict of Belleville. Also pictured (left to right) standing are: Colleen Dwyer, Health Promotion Manager at the hospital, and Susan Rader, R.D., the instructor for the program. The hospital will offer both an evening and daytime weight control program beginning in January. For more information call 429-6856.

Weight reduction offered at Mountaineer Hospital

Beginning in January, The Mountaineer Hospital will again offer its very successful thirteen-week Behavior Modification Weight Control Program.

The hospital offers both an evening (Wednesdays from 7 to 8 p.m.) and a daytime (Tuesdays from 12 noon to 1 p.m.) program.

Developed and taught by registered dietitians from Mountaineer's Food and Nutrition staff, this medically safe program will provide participants with the skills and knowledge necessary for successful weight loss and a lifetime of healthy eating and weight maintenance.

Some of the program topics include counting calories, reading food labels, pitfalls of low-calorie meals, cholesterol, dining out, behavior modification techniques, nutrition principles and the role of exercise in weight control.

Special highlights of the pro-

gram include a guided supermarket tour and a low calorie meal served on the last session of the program, which gives participants an opportunity to practice some of the weight control tips they've learned.

The Weight Control classes are offered as part of the hospital's comprehensive Health Promotion Program. The evening Weight Control Program will meet from January 23 to April 17, 1991 on Wednesdays from 7 to 8 p.m. The daytime program will meet from January 22 to April 16, 1991 on Tuesdays from 12 noon to 1 p.m. The cost of the program is \$198, which also includes free participation in the hospital's follow-up monthly Weight Maintenance Support Group.

Space is limited and pre-registration is required. To register or for additional information, please call Mountaineer Hospital's Health Promotion Office at 429-6856.

Assemblywoman Crecco eager to 'streamline' government

Assemblywoman Marion Crecco (R-Essex County) announced today she will tackle the issue of how to streamline New Jersey Government and make it more efficient as a member of the new task force established by the Assembly Republican Policy Committee.

The newly created "Task Force

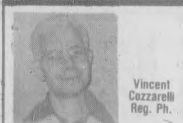
on Government Efficiency Making Government Work" will be chaired by the Assemblywoman and her colleague, Assemblyman Frelinghuysen.

"The task force will examine ways of reducing the cost of government, the size of government and propose policy recommendations to reduce government's growth rate," stated the Assemblywoman.

Assemblywoman Crecco added, "The issue of streamlining government is on the minds of taxpayers, of legislators and even some cabinet members these days." "Certain government leaders will not be allowed to speak out of both sides of their mouth anymore on government efficiency. Our task force will be a forum to discuss problems and formulate solutions," added the Assemblywoman.

"Big government is not necessarily better government," said Mrs. Crecco. "Taxpayers want accountability and want action on the issue of government spending. We hope to hear from government leaders, business innovators, and community leaders about the ways they think government can be more accountable," stated Crecco.

Pharmacy Footnotes



Vincent Cazzarelli, Reg. Ph.

OUT WITH INFLUENZA

The prescription medication known as amantadine is one of a small number of antiviral drugs. It has been proven to be effective in reducing the symptoms and duration of the influenza A virus. Thus, it currently holds the singular distinction of being the only FDA approved therapy for combating this form of the flu. As such, it is recommended to the elderly, children, patients with chronic lung conditions, and anyone else who is at high risk for respiratory infection. This prescription drug is taken orally and relieves the aches and fever that accompany the flu when taken soon after the virus is diagnosed.

Fast prompt service have your physician call your prescription in to us at ROSSMORE PHARMACY, 338 Washington Ave., 759-1968, 759-1956. Conventional aids are available including the sale and rental of walkers, wheel chairs, crutches and canes. We also handle cameras and film, baby needs and greeting cards. Open: 9am-10pm daily, 9am-5pm Sundays.

HINT: Breathing warm moist air has been proven to be an effective way of easing the severity of cold symptoms.

Irvine Cazzarelli Memorial Home

IN YOUR TIME OF NEED "A Family Name You Can Trust"



276 Washington Avenue, BELLEVILLE 759-1114

Professional Service Directory



THE NUTLEY SUN, BELLEVILLE TIMES, BLOOMFIELD LIFE

Podiatrists

Dr. Marykate Noonan Doyle
Surgeon Podiatrist
Foot and Ankle Specialist
272 Holmes Street
BELLEVILLE
Call for Appt.
(201) 450-4070
Medicare and NJRS Participating Physician

Dr. Nicholas Pellicoro
Surgeon Podiatrist
FOOT SPECIALIST
526 Franklin Avenue
Nutley
667-1066
Medicare Participating Physician

Chiropractors

Dr. Robert J. LaBruzza
CHIROPRACTOR
• Auto Related Injuries
• Work Related Injuries
• Occupational Stress
• Back, Neck, Arm and Leg Pain
• Sports Related Injuries
• Permanent Impairment and Disability Evaluations
3 Edgewood Road
Bloomfield 429-2225
(Two blocks behind Bloomfield High School)

DR. RALPH J. DI MAIO
CHIROPRACTOR
Serving your community for over 11 years
Most insurances provide coverage.
751-8805
625 Joralemon St., Belleville

Dentists

Dial "NO-PAINO"
(667-2466)
Cosmetic & Restorative Dentistry
Smile Today
J.D. Muglia D.D.S., P.C., F.A.C.D.
10 Franklin Ave.
Nutley, NJ
24 Hr. Emergency Service

Dentists

Vincent J. Lipoma
D.M.D.
General Dentistry
30 HUCK ROAD
BLOOMFIELD, N.J.
338-1120
Evening and Saturday Hours Available

Attorneys

Deborah C. Peck
ATTORNEY AT LAW
General Practice:
• Matrimonial • Bankruptcy
• Wills • Accidents
FREE CONSULTATION
CLIFTON EXECUTIVE PLAZA
1200 ROUTE 46 WEST
CLIFTON, N.J. 471-1184

This Space Is Available For Your Professional Advertisement

Obstetrics / Gynecology

NUTLEY · KEARNY
OBSTETRICS · GYNECOLOGY
HOWARD GRODER, M.D.
JEFFREY ROSEN, M.D.
HIGH RISK PREGNANCY
INFERTILITY

Nutley Artington
Medical Plaza Medical Building
181 Franklin Avenue 837 Kearny Avenue
Nutley, N.J. 07110 Kearny, N.J. 07032
667-2212 991-1519

"Serving The Community For 40 Years"

For more information call 667-2100

Father Eusebio Kino: 'Everywhere he encountered friendliness'...

By Russell Roemmele

This article is the first in a series centering on Italian history and heritage, not only in Italy, but also in America and in other areas where ethnic-Italian political, economic, social and cultural influence have been experienced. This series will also include "pre-Italian" Roman, Etruscan and Sicilian civilizations. The approach will be deliberately journalistic, and not traditionally scholarly (with intruding footnotes, references, etc.). Readers are invited to comment on the articles by the managing editor of Bloomfield LIFE. This series will continue — the Lord and Frank Orechio (LIFE publisher) willing — through the celebration in October 1992 of the landing in the new world by Christopher Columbus.

"KINO, EUSEBIO FRANCISCO (1644-1711), Jesuit missionary and explorer in northern Mexico and southwestern United States, was born of Italian parentage at Chino, Austria. At the age of 21 Kino entered the Society of Jesus and began studying for the priesthood. After completing his studies, he taught mathematics at the University of Ingolstadt until his request to be assigned to the missions of New Spain was granted. Two years after his arrival in Mexico, in 1681, he participated in an unsuccessful attempt to settle Lower California. In 1687 he was sent to the Sonora frontier and for the next quarter-century was the driving force behind establishing missions in that area, extending his work as far north as the Gila valley. San Xavier del Bac is one of his better known missions, although the present church dates from the later Franciscan period. In 1701 Kino definitely proved that Lower California was a peninsula, not an island, a fact that men had once known but had forgotten. Kino died at Magdalena, Sonora, in 1711 after a career which entitles him to rank among North American missionary figures."

That brief notice about Father Eusebio Kino, SJ, appears in Volume 13 of "Encyclopedia Britannica" (1969 edition). Father Kino must smile when he contemplates he is yet remembered with a paragraph in the standard encyclopedia of our day. He must laugh aloud when he sees his life abridged, as it were, between "Kinkajou" (a single species of a genus of the raccoon family, native to Central and South America) and "Kinorhyncha" (a class of minute wormlike animals of the phylum Aschelminthes, which dwell chiefly in the slime of the ocean floor).

Father Kino accomplished much in his labors of faith in northern Mexico and, as it was to become, in southern United States (primarily southern Arizona). He charted land, drew maps, researched the oral history of Indian tribes, force-

fully created mission settlements (on the one hand, angering Spanish miners and ranchers) and, on the other hand upsetting traditional tribal leaders within the Pima Tribe he tried to convert to Christianity and among antagonistic, more fierce tribes (branches of Apache and Tarahumara).

Father Kino opposed Spanish political-military authority often and, on occasion, disagreed with the Jesuit superior-general in Mexico and, as it developed, with the Jesuit hierarchy in Spain itself.

Resurgent Roman Catholicism

Before I note just a smattering of Father Kino's work in the "Southwest" (useful description of present day Arizona, New Mexico, western Texas, northern Mexico and southern California), I should place him in his proper historical setting. As we say today, he had parameters in which he preached the word of Christianity (as understood by Roman Catholic Jesuits in the later part of the 17th Century) and, in his way, espoused Spanish imperialism and conquest. Father Kino cannot be understood applying values common to our day, although he, as Columbus, has been castigated by liberal and radical historians, especially those now dominating "Native-American" studies at universities in America.

Eusebio Kino was educated and lived in a resurgent Roman Catholic climate in which the Jesuits led the charge against the Reformation. Luther, Calvin and other Protestant leaders were not only great theological opponents of the church, they were also political opponents of dominate Roman Catholic reigns. Thus, when the Jesuits taught religion to its priests (and missionaries), it did so fervently: protectors of the faith and protectors of the Roman Catholic political rule.

Kino absorbed this religious zeal and this political affiliation during his seminary years. He remained forever an exponent of Roman Catholic faith and its political accommodation to Spanish imperial rule. He never was completely comfortable with either the faith or the rule. Perhaps his Italian heritage provoked in him a distaste at times of the Jesuit somewhat callous practicality, instead of the more relaxed, more tolerant Italian romanticism. And that may well be the reason Father Eusebio Kino was able to move unmoledly and fearlessly through one Indian tribe or other, including missionary endeavors among the most savage cousins of the Apache.

Father Kino wrote prolifically during his three decades of missionary work among the Indians of the Southwest. Not many of these historical references have become available, even where his writings have been translated. Moreover, scholars look with raised eyebrows at many of his commentaries about

the Indians because he rarely invoked Indian ideas, myths, legends, beliefs and rites into his commentaries. He seemed more concerned with how he "settled" the Indians, primarily the Pima, at missions (generally a church, within a small village and surrounded with farms or pastures or both).

Missions versus the mines

At the time Father Kino was attempting to overcome somewhat vague allegiance to other friendly or unfriendly tribes, the Spanish political-military authorities had other plans. They were attempting to convince the tribes to donate young men to work in mines or on vast Spanish-owned ranches.

Naturally, the Indians often preferred Father Kino's missions with their more relaxed work ethics than the profit-oriented ethics of the mines and ranch proprietors. This is not to say that the mine owners or the ranch owners treated the Indians as slaves — the conditions, while harsh, were an improvement over most working conditions in many European nations — but the Indians, who had generally advanced little beyond nomadic or pastoral lifestyles, found it easier to farm on mission lands than to pick & shovel within the earth for Spanish silver and gold.

For 25 years Father Kino worked among the Pima. Most times he preached, converted and put to work at the missions the "Upper" Pimas in Arizona (above modern day Tucson, Arizona). He learned the language and he discovered early that the Pima tribe, as so often among the Indians throughout the Western Hemisphere, was not a monolithic people; the Pima "family" was made up of at least 12 distinct tribes, linguistically coherent and socially cohesive (the Pima family spoke one language, perhaps akin to Slav-speaking nationalities or tribes in the Balkans).

Riding the circuit

Let me quote on Father Kino's way with the Indians:

"Kino's method was not to establish himself at a single mission site and then work intensively there, limiting himself to a small area, while awaiting more missionaries. Rather he employed an extensive method — ranging widely in Pimeria, creating a demand for missionaries among other scattered rancherías (Indian settlements), maintaining the interest in them by subsequent rapid visits, and always hoping that he would be supplied with enough missionaries to meet the demand which he was constantly creating."

And, also from Edward Spicer's "Cycles of Conquest":

"... Everywhere he encountered friendliness, and nowhere did his soldier escort find it necessary to make any show of arms."

The inveterate traveling missionary, was also an invariable mediator between the Spanish political-military authorities — many of whom were illiterate gutter-snipes from the sewers of Spain and others of whom were glory-seeking

(continued on page 12)



Retired Fire Chief George Sharra, far left, and Patrolman Michael San Giacomo, third from left, were given the Shield Award recently by Chairman George Lynch, far right. Also pictured is San Giacomo's wife.

Retired chief and policeman receive award from Knights

Belleville Police Patrolman Michael SanGiacomo and retired Fire Chief George Sharra were awarded the Shield Award by the Belleville Knights of Columbus (1990) for "Outstanding service to the community for performance that goes above the call of duty."

Retired Fire Chief Sharra served Belleville Township for 42 years and his accomplishments are many. He entered the Belleville Fire Department in 1948 and retired

from active duty in March 1990. Sharra was involved with the mobile intensive care unit, which operates with the Belleville Fire Department emergency unit and also helped found the underwater recovery unit in 1974, for river rescue.

Selection of Patrolman SanGiacomo was based upon his involvement with the youth athletic program in both little league baseball and junior football pro-

grams. He has donated many hours of his off duty time since becoming involved with the programs in 1985.

Patrolman SanGiacomo's outstanding community services in 1990 include being manager of the American Legion Champions Little League, American League Champions Little League, and American League All Stars, director of Jr. Buccaneers Football League program and umpiring high school softball games.

Seventh grader scores big; gets to take SAT test early

Belleville resident Heather Chaffin has been selected as part of the Johns Hopkins University Talent Search Program to take the Scholastic Aptitude Test on January 26. Heather, daughter of David Chaffin of Belleville, is in the seventh grade at Far Brook School, Short Hills, where she has been a student since 1984.

While the SATs are normally administered to high school juniors and seniors as part of their college entrance exams, the Johns Hopkins Center for Advancement of Acad-

emically Talented Youth uses the SATs in their Talent Search Program as a means of identifying academically gifted younger students.

Heather is one of 15 students, representing 75 percent of the seventh grade class, selected to participate in this first phase of the Talent Search. To do so, they scored in the 97th percentile or higher on the reasoning portion of aptitude tests that were given in the spring of their fifth or sixth grade year.

Those students who qualified

will receive a certificate of merit from Johns Hopkins, as well as information about the programs available for gifted teens. Those who score well on the SATs receive local and state-wide recognition. They are also eligible for special summer classes sponsored by the University.

Since Far Brook began participating in the Johns Hopkins program early in the 80's, between 50 and 75 percent of the seventh graders have qualified to take the SATs every year.

IRA tax-deferred growth — still a great way to secure your future.



SMART CHOICE - AN IRA ROLL-OVER TO PROVIDENT

Now—more investment choices for faster growth.

Annual contributions to your IRA for 1990 are acceptable until April 15th. Rolling over your IRA into a Provident high yield investment can be done at any time. Remember—an early contribution or rollover will increase your tax-deferred earnings.

Come in or call toll-free in New Jersey: 1-800-624-2806



THE PROVIDENT
SAVINGS BANK

Offices throughout New Jersey • Member FDIC

...to simplify your financial life.

THE SALE YOU HAVE BEEN WAITING FOR!

As Seen on TV!

1 1/2 PRICE SALE!
on the

MAACO SUPREME PAINT SERVICE

Reg. \$399.95

FOR ONLY **\$199.00**

That's right...AOT NOW! And during MAACO's WINTER SALE we will paint your car with MAACO SUPREME Paint Service at half its regular price...

Act Now - Offer Expires 2/28/91

Not good with any other offer. Rust and bodywork extra. Vans & trucks slightly higher.

NUTLEY 1-800-287-5522

Behind 67 East Centre Street

Between Washington Ave. & River Rd.

MAACO Auto Painting & Bodyworks are independent franchisees of MAACO Auto Enterprises. Car must be painted by 3/2/91

WE BUY OIL

CONVERTED TO GAS?

WE SPECIALIZE IN FUEL

OIL TANK CLOSURES

647-9297

ANCO TANK & PUMP

SUPER SPECIAL!!!

7 FT. KITCHEN LAYOUT INCLUDES THE FOLLOWING CABINETS: 5430, 3018, 5458

\$299.00

\$39.00

30" 2-SPEED RANGE HOOD

\$69.00

BATHROOM VANITY WITH CULTURED MARBLE TOP

COME SEE US AND SAVE!

VERSA SUPPLY COMPANY

30 Wilson Ave., Newark, N.J.

Tel: 589-3355

OPEN TUESDAY & THURSDAY UNTIL 8:00 PM

EVENTS IN THE AREA

Support groups...

Job Seekers of Belleville, a skill development and support group for unemployed, underemployed, first time entries into job market, 7:30 to 9:30 p.m. Wednesdays, Fewsmith Church, Union and Little streets. No fee. Refreshments. Call Dave at 450-1858 or the church 9:30 a.m. to noon at 759-6669.

Catastrophic illness support group, 6 to 7:30 p.m. first and third Tuesdays, The Hospice, 34 Label St., Montclair. Separate sessions for families and patients. For more information, call 783-7879.

New Jersey Chapter of NAAFA (National Association to Advance Fat Acceptance), social events, human rights information, monthly newsletter. For more information, write P.O. Box 110203, Nutley, 07110 or call 667-2957.

Overeaters Anonymous, self-help group for compulsive overeaters or people with eating disorders, 8 p.m. Tuesdays, Bethany Lutheran Church, New and Joralemon streets, Belleville. For more information, call 759-0770; 8 p.m. Wednesdays, Christ Church, Park and Bloomfield avenues (opposite Grand Union), Bloomfield. For more information, call 746-4658.

Living with Cancer, for cancer patients and their families, 7 to 9 p.m. third Wednesdays, Mountaineer Hospital, Montclair. 429-6140 or 429-6128.

Recovery Inc., a community mental health self-help group for persons who suffer from nervous symptoms and fears, 7:30 p.m. Wednesdays, Parks Dept., 44 Park Ave., Nutley. For free literature, call 766-7466.

Make Today Count, a support group for patients and families dealing with cancer and other life-threatening illnesses, 7 p.m. Mondays, Clara Maass Medical Center, Belleville. 450-2230.

UNHOOKED, for drug and alcohol abuse. Call 643-5050 noon to 7 p.m. Monday through Friday for New Jersey treatment referrals and substance abuse information. Confidential.

New Jersey POISON INFORMATION Education System hotline: 1-800-962-1253. NIPIES is equipped with a computer system that contains information on drugs and chemicals involved in poisoning incidents and can give immediate instructions on what to do. If necessary, you will be referred to an emergency room or private physician.

SOCIAL SECURITY 24-hour toll free number, 1-800-234-SSA (1-800-234-5772). Live operators on duty 7 a.m. to 7 p.m., Monday through Friday. After 7 p.m., before 7 a.m., weekends or holidays, leave your name and number and someone will call you back.

Cancer Response System, a toll-free answer line providing information on all aspects of cancer. 1-800-ACCS-2345, 9 a.m. to 5 p.m. Monday through Friday.

New Jersey Eating Disorders Hotline, for anyone suffering with anorexia nervosa, bulimia or compulsive eating problems, 1-800-624-2268.

Teen hotline, a nationwide toll free hotline for homeless and troubled teens and families, 1-800-999-9999.

For singles only...

Social dancing, 7 to 11 p.m. every Friday, Nutley Italian-American Club, 642 Franklin Ave. For more information, call 284-0639 after 5 p.m.

Bethany O.N.E.S., for singles, widowed, divorced of all religions, 12:30 p.m. third Sunday, Bethany Presbyterian Church, corner High Street and W. Passaic Avenue, Bloomfield. \$5 or food item of equal value for buffet dinner. For more information, call 338-7692. Jan. 20: speaker from PSE&G will present a game and tips on home heating conservation.

Young Adult Singles, first and third Tuesdays, Holy Family School, Brookline Ave., Nutley, 21 to 43. For information, call 751-2415 or 759-9194.

Essex County Chapter of Widows and Widowers, 8 p.m. second Tuesdays, Reflections Hall, Hillside. All ages. For more information and directions, call 751-3015.

New Jersey Moonrakers, for tall adults, 8 p.m. second Tuesdays, Meadowlands Hilton, 2 Harmon Plaza, Secaucus. Dancing and socializing following meeting. \$3. For more information, call 822-0362.

Meetings...

Belleville Historical Society, 7:30 p.m. first Tuesday, Belleville Reformed Church, 171 Main St. Membership open.

Bloomfield Columettes, 7:30 p.m. Jan. 23, Knights of Columbus, State St. Mini Chinese auction for members only following the meeting.

Bloomfield-Glen Ridge branch, American Association of University Women, membership drive meeting, 2 p.m. Jan. 19, parish house, Bloomfield Presbyterian Church on the Green. Speaker: Nancy Butler, N.J. State Division Past President. Refreshments. For details, call membership chairperson at 748-3609.

Belleville Democratic Club installation of new officers, 7:30 p.m. Jan. 15, Little League fieldhouse.

Kingsland Trust, 8 p.m. second Wednesday, Kingsland Manor, 3 Kingsland St., Nutley.

Tri-County Camera Club, 8 p.m. Nutley Museum, 65 Church St. Open to the public unless otherwise indicated. Jan. 22: program, How to Take A

Better Picture.

Court Gratia 751, Catholic Daughters of the Americas, 8 p.m. Nutley Avenue Post 30, 184 Park Ave., Nutley. Business meeting first Monday, social third Monday. For information, call Erma Mastro at 667-4430. Jan. 21, social has been cancelled.

Deborah League of Bloomfield, 8 p.m. second Tuesdays, Civic Center, 84 Broad St., first floor. Refreshments. Everyone welcome.

American Legion auxiliary unit 70, 8 p.m. second Monday, 45 Franklin Ave.

Essex County American Legion auxiliary, 8 p.m. second Thursday, 45 Franklin Ave., Nutley.

Essex Salon No. 8, Eight and Forty, 8 p.m. third Monday, 45 Franklin Ave., Nutley.

Ladies auxiliary, Younginger-Alden Jr. VFW Post 275, 7:30 p.m. second Wednesday, 17 Belleville Ave., Belleville. Membership open.

Nutley Junior Woman's Club, 8 p.m. first Monday, clubhouse, 216 Chestnut St. Open to women 18 to 35. For more information, call membership chairman Denise Pender at 235-1822.

Evening Membership Dept. of the Nutley Woman's Club, 8 p.m. second and fourth Thursdays, clubhouse, 216 Chestnut St. Women of all ages invited.

VFW Post 493, 8 p.m., 1st and 3rd Tuesdays, 271 Washington Ave., Nutley. Membership open.

ENJA-North Jersey Amiga Users Group, a non-profit computer users organization, 7:30 p.m. first Tuesday, American Legion Post 70, 45 Franklin Ave., Nutley. Demonstrations, small group seminars. Free. Coffee served.

Belleville Kiwanis Club, 6:30 p.m. Thursday, San Carlo Restaurant, Lyndhurst.

Essex Chapter, American Association of Medical Assistants, second Wednesdays, Doctors' Lecture Hall, Clara Maass Medical Center, 1 Franklin Ave., Belleville. For information, call 743-7686.

Ladies auxiliary, Post 711, VFW, 8 p.m. second Thursday, 369 Broughton Ave., Bloomfield. For membership information, call Helen Mooney at 338-8053.

VFW Post 711, 8 p.m. second and fourth Mondays, 369 Broughton Ave., Bloomfield. For membership information, call 338-4256 or 338-8404.

Belleville Lions Club, 12:15 p.m. second and fourth Thursdays, Forest Hill Field Club, Bloomfield. Call Dennis Mautone at 751-4100.

Junior Woman's Club of Belleville, 7:30 p.m. second Monday, 51 Rossmore Place. For women 18 to 35. For more information, call Terry at 759-8669.

Junioettes Club of Belleville, 6 p.m. second Monday, 51 Rossmore Place. For girls 12 to 18. Members wanted. Call Terry at 450-4835.

Junior Woman's Club of Bloomfield, 8 p.m. second and fourth Tuesdays, September through June, Civic Center, 84 Broad St. Open to women 18 to 35. For more information, call Laura Curcio at 338-0614.

Bloomfield Kiwanis Club, 12:15 p.m. Thursday, Forest Hill Field Club, Belleville Ave., Bloomfield.

Nutley Speakers Club, 7:45 p.m. first and third Mondays, second and fourth Thursdays, 6 Willow Place. New members welcome. For information, call 667-5473.

White Eagle Unit 448, American Legion Auxiliary, 8 p.m. fourth Tuesday, Essex Manor, 41 Broughton Ave., Bloomfield.

VFW Post 493 auxiliary, second Tuesdays, Post Home, 271 Washington Ave., Nutley. Membership open. Write to Stuart E. Edgar Post 493 Ladies Auxiliary, 376 Chestnut St., Nutley.

Belleville Old Guard, 9:30 a.m. second and fourth Tuesdays, Fewsmith Memorial Presbyterian Church, 444 Union Ave. Refreshments.

Fundraisers...

Luncheon, sponsored by Evening Membership Dept., Nutley Woman's Club, 11 a.m. to 1:30 p.m. Jan. 17, Nutley Woman's Club, 216 Chestnut St. \$4.50. Baked chicken, baked potato, vegetable, Jello salad, dessert, coffee. For reservations, call 667-7120 or 667-1161.

Art auction, by European-American Art Co., sponsored by Nutley Junior Woman's Club, 7 p.m. Jan. 18, The Palace, Kings Court, Lyndhurst. Tickets at \$5 available at the door. To benefit local charities. For information, call 661-3400.

Second annual Tricky Tray, sponsored by School 5 PTA, Jan. 25, Belleville High School. \$6. Theme: Name That Tune. For ticket information, call Lynn at 751-2744 or Mary Anne at 759-8313.

Pancake breakfast, sponsored by Louise Palagano and Friends, 8:30 a.m. to noon, Jan. 27, Bloomfield Civic Center. \$4. Donation will be made to Alzheimer Association. For information and tickets, call Joe at 429-2493.

Chinese auction/Night at the Races, sponsored by School 3 Home and School Association, 7:30 p.m. Feb. 1, Belleville Knights of Columbus Hall. \$13 includes cold buffet and one entry for each race. For tickets or information, call Michele at 759-5656, Debbie at 450-0042 or School 3 at 450-3530. Seating limited to 200.

Charles F. Rilli, M.D. announces the opening of his practice of **UROLOGY**

at 256 Broad Street, Bloomfield, N.J. 07003

Medicare Assignment Participant — Insurance Accepted

Practice includes:

Prostate Cancer and Disease • Impotence • Infertility
Vasectomy • Urine and Bladder Control Problems
Kidney Stone Disintegration
Bladder and Kidney Infections and Disorders
EVENING AND SATURDAY APPOINTMENTS AVAILABLE
Bloomfield Harrison
(201) 743-4450 213 S. Frank Rodgers Blvd.
(201) 482-7070

Annual rock and roll dance, sponsored by Bloomfield High School G.A.L.S., 7:30 p.m. Feb. 2, Bloomfield Knights of Columbus Hall. \$25 per person. Beer, soda, set-ups provided. Catered by Daily Caterers. Limited tickets available. Call Joe Prestianni at 1743-0352.

Capid's Arrow annual Chinese auction, sponsored by Fairview Home and School Assoc., 7 p.m. Feb. 8, Branch Brook Manor, 14 Washington Ave., Belleville. \$20 includes dinner (roast beef or chicken in wine and mushroom sauce). Deadline for tickets: Jan. 30. For reservations, call Linda at 748-5247 or Eugenia at 748-1956.

Valentine dance, featuring the music of Bobby Byrne, 7:30 p.m. to midnight Feb. 8, Knights of Columbus, 94 Bridge St., Belleville. Limited open bar, music, coffee. \$12.50. For more information, call Al Rossi at 751-7445, Jim Kistner at 450-0948 or Joe Wolf at 991-4930.

Art auction, sponsored by Nutley Family Service Bureau Women's Auxiliary, Feb. 8, The Palace, 525 Riverside Ave., Lyndhurst. Cocktail hour with open bar and hors d'oeuvres at 7:30 p.m. followed with auction at 8:30 p.m. \$10. Olds, lithographs, etchings, serigraphs, posters in all price ranges. For advance tickets or donations, send checks made payable to NFSB Auxiliary to Valerie Kuchta, 25 Mapes Ave., Nutley, 07110.

Winter Wonderland dance, 8 p.m. to 1 a.m. Feb. 16, St. Peter's School, 152 William St., Belleville. Live band, beer, snacks, buffet, set-ups. BYOB. \$20. For tickets and information, call Michele at 751-6379, Carmella at 759-3889 or Rosemary at 481-1209.

Valentine dance, 8 p.m. Feb. 16, Bloomfield Knights of Columbus, 190 State St. \$20. Sit down meal, music, dancing. For tickets, call Rose Ruffalo at 743-8688.

7th annual Champaigne Brunch, sponsored by Historic Restoration Trust, 11:30 a.m. to 1:30 p.m. Feb. 24, The Palace at Kings Court, Lyndhurst. \$22 adults, \$16 children under 12. Proceeds to restoration of Kingsland Manor. Checks payable to Historic Restoration Trust should be sent to D.J. Eisenfelder, 51 Enclosure, Nutley, 07110.

Entertainment 1991 coupon books, Grace Church, Nutley. Call 235-1177; American Cancer Society. Call 736-7770; Men's Club, Congregation Ahavath Achim. Call 759-9394. St. Mary's Home and School Association, Nutley. Call Debbie Mowad at 667-5081 or St. Mary's School at 667-0801.

Other events...

Auditions for Waiting For Godot, 2 to 5:30 p.m. Jan. 20; 7 to 10 p.m. Jan. 21, Nutley Little Theatre Barn, 47 Erie Place. Show dates from March 8 to 23. For directions or more information, call George Winship at 857-0457.

Country Folk Art show and sale, 5 to 9 p.m. Jan. 25 (36); 10 a.m. to 5 p.m. Jan. 26, 27 (34). Children 10 and under, \$2. Early buying privileges on Friday. Shaker boxes and furniture, grapevine wreaths, quilts, rag rugs, country signs and much, much more. For more information, call (313) 634-4151.

Registration for Nutley Adult School, 7 to 9 p.m. Feb. 11 and 14, Nutley High School, 300 Franklin Ave. 57 courses. Classes start Feb. 28 and March 4. Business subjects, computer, crafts, languages, health related classes and much more.

Free health screenings, at Montclair Community Hospital, 120 Harrison Ave., Montclair. Appointments required. Call 744-7300, ext. 4296, 10 a.m. to 1 p.m. daily.

Birthing clothing drive, sponsored by Women's Club of Nutley. Needed: new or used maternity clothes, newborn items such as sweater sets, receiving blankets, sleepers, booties, etc. Birthright aids pregnant women in need of medical aid, shelter, legal aid, counseling, emotional support. For pick up, call 661-9029.

Volunteers needed to work for the Outreach Program at Montclair Community Hospital, 120 Harrison Ave. To answer hotline, schedule appointment and assist with free health screenings. Volunteers with bookkeeping experience also needed. For more information, call 746-4644.

Nutley Museum open 2 to 4 p.m. third Sundays, 65 Church St. Highlighting Christmas gifts from long ago. For more information, call 667-5239.

Class reunions...

Bloomfield 1971, March 2, 1991. Bloomfield '71 Reunion, P.O. Box 1338, Eatontown, 07724.

Bloomfield 1966, April 26, 1991. 1-800-22-CLASS

Belleville 1941 interested in planning reunion, call 686-8053 or write Anthony Cialella, 1077 Elker Road, Union, 07083.

Central Newark, June 1961, Melanie Mitchell Manning, 1407 McFadden St., Paris, TN, 38242, (901) 642-5231; **West Side Newark, June 1946**, Bill Gilroy, 32 Greenbriar Drive, Summit, 07901; **Clifton 1961**, planning reunion. Send updated address to CHS Class of 1961, P.O. Box 2565, Clifton, 07015; **Arts High, Newark, 1962**, planning reunion. Contact Nick Sciarallo, 30 Arbach Lane, Manalapan, 07726.

(To be included in this column, items must reach us by 3 p.m. the Friday preceding publication. Sorry, no exceptions and no items taken over the phone. Limited to Belleville, Bloomfield, Nutley primarily. Other towns included only if space permits. No charge. Questions? Call Helen Maguire at 667-2100. Mail to Orechio Publications, Events in the Area, 800 Bloomfield Ave., Nutley, 07110.)

After 23 Years...

DENTISTRY FOR CHILDREN, P.A.

Is Proud To Announce The

RELOCATION

Of Their Office To:

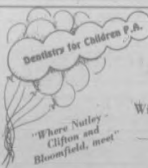
382 W. PASSAIC AVE.

BLOOMFIELD, NEW JERSEY

(Diagonally across from our old office and adjacent to Broadway Photo)

By Appointment

201-338-1383



Jack Budnick, D.D.S.
Philip Wasserman, D.D.S.
William B. Kuen, D.M.D., M.Sc.D.
Orthodontist

382 West Passaic Ave.
Bloomfield, N.J. 07003



Is someone hurting you physically or sexually?
Are you thinking about running away? Are you
hooked on drugs or alcohol?

Call the Boys Town National Hotline to talk to
caring people who will listen to your problems
and find you help quickly and close to home.

Call toll-free, anytime.

Infantozzi-Toledo troth told; nuptials next spring

Mr. and Mrs. Nicholas Infantozzi of Belleville announce the engagement of their daughter, Nicole, to Eddie Toledo, son of Mr. and Mrs. Justo Toledo of Clifton.

The troth was made known at Christmas. The wedding is planned for the spring of 1992.

Miss Infantozzi, a graduate of Belleville High School and Capri Institute, is a manicurist at Capelli's, Nutley.

Mr. Toledo, an alumnus of Paterson Catholic Regional High School, is a business consultant with N.J. Bell.



Nicole Infantozzi — Eddie Toledo



Mr. and Mrs. Giuliano Frappaolo — nee Geri Angeline

Geri Angeline bride of Giuliano Frappaolo

Geri Angeline, daughter of Mrs. Geri Angeline of Nutley and John Angeline of Bloomfield, became the bride recently of Giuliano Frappaolo, son of Mr. and Mrs. Mario Frappaolo of Belleville.

Rev. John O'Donnell performed the ceremony in St. Peter's Church, Belleville. A reception followed at Atrium West, West Orange.

Escorted by her mother, the bride wore a beaded gown fashioned with a v-shaped neckline and back, long sleeves and cathedral train. A beaded headband held her veil.

Sandy Knierim of Belleville was her sister's maid of honor. Bridesmaids included another sister, Maria Marchese of Nutley and Diane DePrizio of Belleville. Flower girls were nieces of the bride, Maria Marchese and Sandi-Lynn Knierim.

They were attired in pink gowns. Nino Frappaolo of Belleville served as his brother's best man. Ushers were Bruno Frappaolo of Belleville, brother of the groom and Michael Masucci of Bloomfield.

Mrs. Angeline was in a peach gown while the groom's mother wore a teal gown.

Mrs. Frappaolo, an alumna of Berdan Institute and Capri Institute, is the owner of Get Nailed, Belleville.

Mr. Frappaolo attended Bloomfield Vocational and Technical High School and RETS Electronics School. He is a self-employed private chauffeur.

The couple honeymooned in Cancun, Mexico, following the Sept. 30 nuptials. They have made their home in Belleville.

Maria Gurrera engaged to marry John Kane

Mr. and Mrs. Jack Gurrera of Belleville announce the engagement of their daughter, Maria, to John Joseph Kane, son of Mr. and Mrs. James Kane, also of Belleville. The wedding is planned for February of 1992.

Miss Gurrera, an alumna of Belleville High School and Kean College, Union, is an accountant with State Farm Insurance Company.

Mr. Kane, also a Belleville High School graduate, is a computer operator with ADP.



Maria Gurrera — John Kane

STORK CLUB

Jessica Ruth Aufiero

A first child, a daughter, Jessica Ruth, was born to Mr. and Mrs. Louis Aufiero of Nutley Dec. 23 at Clara Maass Medical Center, Belleville. Birth weight was 6 pounds, 1 ounce.

Mrs. Aufiero is the former Nancy Sebastian, daughter of Anthony Sebastian of Belleville. She is an administrative secretary with Hoffmann-La Roche. Mr. Aufiero, son of Mr. and Mrs. Louis Aufiero of Lodi, is with the Department of Public Works, Boro of Lodi.

Yasmin Tan Estrella

A third child, a daughter, Yasmin Tan, was born to Mr. and Mrs. Rodolfo Estrella of Belleville Dec. 28 at Clara Maass Medical Center, Belleville. Birth weight was 7 pounds, 9 ounces. She joins Rodeylin, 16 and Michelle, 10.

Mrs. Estrella is the former Evelyn Tan, daughter of Perian Tan of Belleville. She is a registered nurse at University of Medicine and Dentistry of New Jersey. Mr. Estrella, son of Mariano Estrella of Manila, Philippines, is a quality control inspector with Duxet Inc.

Christopher Joseph Avino

A first child, a son, Christopher Joseph, was born to Mr. and Mrs. Mark Avino of Belleville Dec. 18 at Clara Maass Medical Center, Belleville. Birth weight was 8 pounds, 9 ounces.

Mrs. Avino is the former Laurie Nitti, daughter of Mr. and Mrs. Joseph Nitti of Belleville. Mr. Avino, son of Mr. and Mrs. Anthony Avino, also of Belleville, is a data processing manager with Recruit USA, Jersey City.

Thomas James Freda

A first child, a son, Thomas James, was born to Mr. and Mrs. Sal Freda of Belleville Nov. 30 at St. Barnabas Medical Center, Livingston. Birth weight was 6 pounds, 8 ounces.

Mrs. Freda is the former Mary Kane, daughter of Mr. and Mrs. James Kane of Belleville. Mr. Freda, son of Mr. and Mrs. Salvatore Freda of West Caldwell, is the proprietor of Business Fortis Plus.

We'll Make You

Smile Today



Start Smiling!

consultation, 2 x-rays

and an oral exam...

No Charge

an \$85 value at no charge with this ad. hurry offer expires 2/28/91, by appointment only

Smile Today

James D. Muglia, DDS, PA, FAGD

Family • Cosmetic • Restorative Dentistry
24 Hour Emergency Service

10 Franklin Avenue • Nutley

Dial "NO PAINO" (667-2466)

You don't get a cold from a change in the weather

After a week of golden Indian summer, the temperature suddenly drops to 40 degrees. The familiar refrain starts: "I got a cold from this change in the weather."

Did the quick shift cause a cold? Do seasonal variations really affect health? To separate facts from myths, it is appropriate to examine the common cold, whose onset is often blamed on the weather.

Without the introduction of a virus into the body — most often the rhinovirus — cold symptoms do not occur. Temperature changes do not cause colds, but the virus thrives in a cold temperature. If the temperature of the nasal area is cool, it will provide a favorable environment for the virus to grow.

The virus, which is not airborne, can live on a surface or object touched by someone with a cold. Frequent handwashing can help prevent a cold from spreading.

A reaction known as allergic rhinitis can be confused with cold symptoms. An inflammation of the nasal lining, it is induced by a substance to which the person is allergic and can cause a runny nose.

Certain illnesses follow a seasonal timetable, but the relationship to weather is unclear. January and February are the months when influenza reached epidemic proportions. From March to June seems to be the time for chicken pot and measles.

In the summer months, we encounter a type of virus called

enterovirus that lives in contaminated water and causes cold-like symptoms that people refer to as a "summer cold." Summer also is the time for mosquito-borne encephalitis and the infections of Lyme disease and Rocky Mountain spotted fever.

Seasonal allergies follow the growth patterns of nature. Spring brings allergies induced by tree pollen, followed later by pollen from grasses and ragweed.

Some rheumatic conditions seem to vary according to temperature and barometric pressure. Studies show that patients can feel worse when these changes occur and that pain is greater in summer than winter.

Certain injuries are specifically related to temperature. Heat cramps, exhaustion and stroke for example are specific responses of the body to high temperatures. Hypothermia (below normal body temperature) and frost bite are reactions to excessive cold.

The effects of weather on health have even become part of the language when we say, for instance, that someone is under the weather. Be that as it may, if it's a cold you have, don't blame it on the winter wind.

(This column, written by H. Timothy Dombrowski, D.O., is a public service of the University of Medicine and Dentistry of New Jersey.)

Educational program at Maass graduates 65 employees

Learn More, Be More, an educational program sponsored by Clara Maass Medical Center, graduated 65 employees at ceremonies recently at the medical center.

The program provides academic assistance to employees seeking to improve their reading, writing and communication skills. It is taught by educators from Union County College and is free to all Clara Maass employees. Through the pro-

gram, employees are given the opportunity to pursue personal goals in small classes with individualized attention.

"We are extremely proud of our graduates," said Robert S. Curtis, president and CEO of Clara Maass. "By making an investment in themselves, our employees invest in the medical center, which ultimately means quality care for our patients."

High school choral groups entertain AARP members

Members of the American Association of Retired Persons, Inc., Chapter 2031 of Belleville, were entertained by the Belleville High School Concert and Chorus Ensemble with a Christmas con-

cert at its December 6 meeting.

The group was grateful to Dr. Frenetti and Mrs. Black for "a delightful program and great performance by the high school students."

MEDICALLY SPEAKING

HOARSENESS

Q: What is hoarseness?

A: Hoarseness is an alteration in the normal production of the voice by the vocal cords.

Q: What are the causes of hoarseness?

A: Most cases are caused by infection (laryngitis). Some others are related to voice abuse; environmental exposure; or smoking, which can cause vocal cord nodules and polyps.

Q: Who should have an examination by a throat specialist?

A: Anyone who has hoarseness persisting for two weeks.

Q: Have there been recent advances in the diagnosis of hoarseness?

A: Yes. With the FLEXIBLE FIBEROPTIC LARYNGOSCOPE, a complete examination of the voice box can be done in the office without discomfort.

Q: What if I need surgery?

A: Surgery can be done under general anesthesia on an outpatient (same day) basis. All removed tissue is sent for a biopsy study.

Modern techniques such as the OPERATING MICROSCOPE and, in indicated cases, LASER, allow accurate and precise surgery. Recovery is rapid with patients able to resume most activities the next day.

MEDICAL & SURGICAL

EAR, NOSE & THROAT GROUP

Bruce E. Gordon, M.D. Arthur J. Lester, M.D.

5 Franklin Avenue 382 Ringland Street 323 Ridge Road

Belleville, N.J. 07003-1400 Nutley, N.J. 07110-2347

759-4005 235-1400 667-2347

ADVERTISE!

This Program Won't Just Open Doors. It'll Knock Down Walls.

Options Plus is a Gibbs program for people who want to make some noise in the business world. Options Plus is a six-month course that's part of our continuing education being offered in the evening. This

course will give you a working knowledge of word processors and microcomputers, as well as marketable secretarial skills. But classes start soon, so call or send in coupon to today. Financial aid available to qualified applicants.

Montclair (201) 744-6967

Gibbs

The Shortest Distance Between You and Success

33 Plymouth Street, Montclair, NJ 07042

Name _____ Phone (H) _____ (W) _____

Address _____

Program of Interest _____ YR. HS GRAD _____

Four Ways You'll Save at Grand Union!

1. Everyday Low Prices!
2. Red Dot Specials!
3. Unadvertised Red Dot Specials!
4. Super Coupons!

354 MAIN AND JORALEMON AVE., BELLEVILLE • OPEN 24 HOURS • STORE DIAL 759-1750

Chunk Style in Water
**Star-Kist
White Tuna**
6.125-oz.
Can **89¢**

Special Request (10.7-oz.)
or Regular Condensed Soup
**Campbell's
Chicken Noodle**
2 10.75-oz.
Cans **79¢**

Super GRAND UNION Coupon
Tab, Fresca, Regular or Diet Sprite,
Cherry Coke, Minute Maid Orange or
Regular or Caffeine Free
**Coke Classic
or Diet Coke**
One
2-Liter Btl. **99¢**
No Minimum Purchase Required With This Coupon. Good
Jan. 13 Thru Jan. 19. Limit One Coupon Per Family.

Kraft - Light Neufchatel or Regular
**Philadelphia
Cream Cheese**
8-oz.
Box **99¢**

Pre-Basted with Ribs - 5 to 7 Lbs. Frozen
**Grade 'A'
Turkey Breast**
Lb. **118**

Super GRAND UNION Coupon
Significant Source of Vitamin A
**Fresh
Broccoli**
Large
14 Size
One
Bunch **99¢**
No Minimum Purchase Required With This Coupon. Good
Jan. 13 Thru Jan. 19. Limit One Coupon Per Family.

U.S.D.A. Choice Ultra Trim Beef - Bone-In
**Sirloin
Steak**
Full Cut
with
Tenderloin
Lb. **299**

U.S.D.A. Grade 'A' Fresh - Oven Stuffers
**Perdue Chicken
Drumsticks**
Lb. **89¢**

Super GRAND UNION Coupon
Assorted Varieties
**Nabisco
Premium Crackers**
One
15-oz. to
16-oz. Box **99¢**
No Minimum Purchase Required With This Coupon. Good
Jan. 13 Thru Jan. 19. Limit One Coupon Per Family.

Hot or Sweet
**Fresh Italian
Pork Sausage**
In Pkgs.
of 3-lbs.
or More.
Ea.
Lb. **199**

New Crop - The Natural Snack
**Seedless
Red Grapes**
Lb. **119**

Maine - U.S. No. 1 Low in Sodium
**All Purpose
White Potatoes**
5-Lb.
Bag **99¢**

Italian Style - Deli Sliced to Order
**Top Round
Cooked Beef**
Half
Lb. **299**
Contains up to 20% Moisture Added

Regular or Sour Cream & Onion
**Eagle Ridged
Potato Chips**
6.5-oz.
Bag **79¢**

French, 1,000 Island, Ranch, Catalina or
**Kraft Fat Free
Italian Dressing**
8-oz.
Btl. **99¢**

GRAND UNION

Not Responsible For Typographical Errors. We Reserve The Right To Limit Quantities. For Consumer Information or Assistance, Call Toll Free, 1-800-221-1835.
Prices and Offers Effective Sunday, Jan. 13 thru Saturday, Jan. 19, 1991.

Belleville Times SPORTS

BUC SHOTS

By Mike Lamberti



Since the football season, we've said what a good job the Belleville cheerleaders have done week in and week out. Last Sunday afternoon, the team got a chance to show most of the state how talented they are.

The girls placed fourth in a field of ten varsity cheerleading squads, and head coach Carol Russo was thrilled with the performance.

"The girls really worked hard for this," Russo said. "They did great in the competition. It was a great experience and we learned a lot of things for next year."

This was the first time that Belleville cheerleaders have taken part in competition. It was held at Christian Brothers Academy in Lincroft, New Jersey last Sunday afternoon. The competition was sponsored by the Knights of Columbus and was entitled the Knights of Columbus New Jersey Cheerleading Competition, 1991.

During the football season, the girls cheered every week for the Bucs. This time, the Buc football players, along with a strong contingent from Belleville cheered for the cheerleaders.

"The support from the township was great," Russo said. "A lot of the football players were there, the parents were very supportive and the fans were great."

Russo admitted that her team learned a great deal from the experience.

"Next year, we'll add more gymnastics moves," Russo said. "This year, we went with the 'hello' cheer and a modification of the dance we used during the football season."

"Bishop Ahr won the competition and they have been competing for a long time. For the first time around, it was a great showing. I'm really proud of the girls."

Belleville received a trophy for its effort.

"The girls put in a lot of hours for this," Russo said. "The last two days before the competition, they practiced until 6 p.m. on Friday (the night of the blizzard) and on Saturday, they worked from 11 a.m. until 4:30 p.m."

Next week, we'll hopefully have some pictures from the competition.

Congratulations to the entire squad for an outstanding job.

BELLEVILLE REC WRESTLING

The Belleville recreation wrestling team opened its 1991 season with two impressive road victories against Glen Ridge and Bloomfield.

At Glen Ridge, the boys, coached by Ralph Cardinale and Lou Riccardi, scored victories in twelve matches with pins by Anthony Conte, Frank Zarro, Luke Cardinale, John Perna and Dominic Tufuri.

Belleville prevailed by a 70-24 count in the Glen Ridge match.

Versus Bloomfield, Belleville came up with 14 victories and six pins. The falls were recorded by Conte, Perna, Robert Caputo, Tufuri, Ed Miranda and Tom Haverick.

The most exciting matches of the day were victories by Chris Zarro and Jim Palo, who both showed exceptional stamina and heart with strong comebacks in the third period. Other impressive wins were turned in by Cardinale, Tim Hands, Keith Hands, Anthony Frantantonio and Jorge Hernandez.

Belleville's home matches will be January 17, versus Cedar Grove at 7:30 p.m., January 22 against Livingston at 7:30 p.m., January 29 versus West Orange at 7:30 p.m. and February 9 at 10 a.m. against Maplewood. All matches, except the Maplewood match, will be held at Belleville High School. The Maplewood match will be held at the Middle School.

In the Middlesex tourney, held on December 30, 1990, the following wrestlers gained places. Finishing first was Frank Zarro at 70 pounds. Second place finishers were Anthony Conte (65 pounds, midget), John Perna (85 pounds, intermediate) and Keith Hands (79 pounds, intermediate).

Third place finishers were Tim Hands (63 pounds, junior), Dominic Tufuri (125 pounds, junior) and Jorge Hernandez (133 pounds, junior).

LET'S PRAY FOR PEACE

It's Tuesday night, January 14, 1991, as I write this column. It's about 8 p.m. WCBs radio is playing some oldies and, on the surface, this appears to be another typical night at the newspaper. (Having worked here since September of 1975, this has become rather routine).

But, as everyone knows, January 14, 1991 is not just another evening. The tension is in the air and the winds of war are approaching. Will the United States go to war? Will our servicemen be called upon to defend their country in a foreign land?

The hope here, and I'm sure throughout our country is that somehow, somehow, this will be resolved at the 11th hour. When this paper hits the stands sometime late

(continued on page 12)

Cardinale continues unbeaten

Wrestlers rebound in tourney

By Joe Pigaro

When a team can bounce back from adversity, it usually means a solid foundation has been established over a long period of time. Belleville's wrestling Buccaneers took that opportunity to rebound after suffering a humbling 48-15 loss to Bergen Catholic, by placing second in the seventh annual Minuteman Classic Invitational.

So one sided was the loss to Bergen Catholic that only three Bucs won matches. Josh Cardinale pinned at 103, Mike Conte recorded a pin in the 119 pound class and Lee Hands registered a 5-0 decision at 145 pounds.

Bergen Catholic simply had too much firepower for Belleville, as our Bucs saw its undefeated season go up in smoke. Now at 5-1, Belleville is looking for the first time ever to the Crusaders in a series that began in the 1983-84 season.

In the Elizabeth tournament, the grapplers competed in a field with Somerville (8th ranked in the state and number one in Somerset County), North Bergen (number one in Hudson County), Elizabeth, Neptune and Long Branch. J.P. Stevens and St. Joseph's of Metuchen withdrew at the last minute due to the inclement weather conditions.

Still competing with basically a 2/3 of a team, (Miele, Nardone, Hywel out with injuries, Mayer withdrawing from the squad), coach Joe Nisvoccia played good scotch with his lineup and walked away with above average results.

Cardinale remained unbeaten at 104 by dominating the 103 pound division. Cardinale didn't give up a point as he flattened Ron Russo of Long Branch at 3:44 of the second period in the semifinal round. Cardinale then scored another shutout by whitewashing Somerville's Kean Hanley, 4-0 in the championship bout.

In a season that has had so many pitfalls, Cardinale has emerged as a legitimate star and leader. No losses, no problems for the coach, nothing but hard work and dedication make the diminutive sopho-

more the perfect leadoff man in an otherwise unsteady lineup.

Senior Lee Hands was Belleville's only other champion, as he also dominated his 145 pound weight class. Now sporting a 10-1 record, Hands pinned Jason Marguardt of Somerville in the semis, then ran up a 13-1 margin over Hernando Alvarado of North Bergen in the finals.

It was the second consecutive Elizabeth title for Hands, as last year he won the 135 pound title. Hands also appears to be emerging as the team's emotional leader, something that is needed at this point of the season.

Mike Conte won a silver medal at 112 pounds, but deserved a better fate. Wrestling against Somerville's Dave Valentino for the championship, Conte was given a lesson in how to win a bout by crawling into a shell.

Valentino wrestled the way Sugar Ray Leonard won boxers. He would score a few points, just enough to get a lead, then he would stall as Conte frantically tried to score points. The O.T. score of 8-6 was set up by a takedown in the first overtime by Valentino. Conte tried desperately for a reversal or escape, while the Somerville champ held on to an ankle, or a wrist or whatever was available to burn time off the clock.

Belleville had four other second place finishes. Tom Pontrelli placed at 119, Chris Talbot dropped from 130 to 125 and was runnerup to the tournament co-MVP, Frazer Sutphen of Somerville. Carlo Ritacco dropped from 135 to 130 and was runnerup to the other co-MVP, Osvaldo Ramos of Elizabeth. Angelo Torromeo surprised everyone by finishing second at 135.

Mastropolo (160) and George Wallace (170) finished third, while Vinnie DeSimone (140) and Allan Cruz (152) placed fourth. Belleville placed no entrants in the 171 and 189 pound weight divisions.

BUC NOTES: Wrestler of the week is Josh Cardinale. The sophomore blitzkrieg has given up only four points all season and looked

Roll fumes as capers drop two NNJIL games

By Mike Lamberti

These are the times that test men's souls.

Or, in the case of the Belleville boys' basketball team, these are the times that send a 30 year old basketball coach into a refreshment corner of Frustration 101.

Last week will not go down in the annals of Belleville basketball as pleasantly memorable. The Bucs played twice, and lost both games. To give you an idea of what the high point of the week was, it occurred last Friday when practice was cancelled due to a snow storm.

The Bucs lost to Teaneck, 99-50 and St. Joe's of Montvale, 82-54. Belleville fell to 3-5 with the two setbacks. Don Roll's team has now lost three straight games heading into this week's action.

Belleville took on Paramus last Tuesday. Tomorrow, the Bucs face a very difficult assignment when the team plays at Hackensack. Tip off here is 4 p.m. Next Tuesday, Don Bosco visits Belleville in a 4 p.m. game.

Roll was beside himself last Tuesday following the loss to the Highways of Teaneck.

"I basically told the kids at halftime that their heads weren't in the game," the coach said. "You don't mind losing when the other team is just plain better than you are. But Teaneck isn't 49 or 51 points better than us. We didn't come to play, and it's very disappointing, especially since it was a home loss for us."

The Bucs, perhaps still reeling from a one point loss to Paramus Catholic the previous Saturday evening, never got into the flow of the game. Belleville trailed 27-18 after one quarter and 53-29 by intermission.

"We cut the lead to 21-18 late in the first quarter," Roll said. "I figured we were getting back into the game. Then, Teaneck scores

the next six points and we just fell apart."

It was 78-37 after three quarters, with the final frame a mere formality.

Sal Stralace led Belleville with 17 points. Dennis DeWor had 12, Troy Talmadge was held to eight, Bryant Jimenez scored seven and Jim DuHaime and Art Caruso scored three points each.

For Teaneck, the extremely talented Luis Ayala had 30 points. The 6'4" swingman more than lived up to his pre game billing.

"Ayala is a tremendous player," Roll said. "But we just let him do whatever he wanted out there. We weren't nearly intense enough."

The Bucs hit the road for the very long journey to Montvale and a game with St. Joe's last Thursday evening. If the ride to Montvale was long, it's safe to assume the return trip felt like a trip around the world on a 20 mile train.

St. Joe's took control of this game early, jumping out to a 24-7 first quarter lead. It was 43-22 by halftime and 64-39 after three quarters of action.

"St. Joe's came out shooting very well," Roll said. "They hit four three point baskets in the first quarter alone. We came out pretty flat and fell behind by too many points too early."

Talmadge led the Belleville attack with 22 points. Stralace scored 14, Caruso had seven, Michael Vista tallied five, DuHaime scored four and Jimenez closed out the scoring with two points.

NOTES: The Bucs were without the services of sophomore Dennis DeWor in the St. Joe's game. DeWor has strep throat and Roll did not expect him in the lineup for last Tuesday's game with Paramus. Bucs are now 2-3 in NNJIL Pacific Division. The team beat Don Bosco and Nutley and has lost to Paramus Catholic, Teaneck and St. Joe's.

WRESTLING

Weds. Jan. 16	Don Bosco	A 7:00
Sat. Jan. 19	Nutley	H 1:30
Weds. Jan. 23	Paramus Catholic	A 7:00
Fri. Jan. 25	Teaneck	H 7:00
Weds. Jan. 30	St. Joseph	H 5:00
Sat. Feb. 2	Paramus	A 1:30
Sat. Feb. 9	Tri-Hackensack & Cliffside Park	A 12:00
Tues. Feb. 12	Sectionals	
Fri. Feb. 15	Cedar Grove	H 7:00
Sat. Feb. 16	Montclair	H 1:30

absolutely super at Elizabeth. Good job, "Mr. C." Answer to last week's trivia question: Armando Nardone wrestled five state champions in his career at BHS. He defeated four, Art Cuffari of Bloomfield twice (1984-85), Mike VanDoren of North Hunterdon (1986-87), Steve Giordano of South Plainfield and Chad Cassidy from Highland Regional (1987-88). Nardone's only loss was to Todd Young of Haddon Twmp. In the 1986-87 state finals.

Lady Bucs defeated by Clifton and Teaneck

By Mike Lamberti

So much for the one game winning streak.

After beating Barringer for its first win in 23 months last week, the Belleville girls' basketball team lost decisions to Teaneck, 64-19 and Clifton 57-31.

Karen Fuccello's team was 1-8 going into last Tuesday's game at Paramus. Tomorrow afternoon, the Lady Bucs are home to Hackensack in a 4 p.m. game. Next Tuesday, Belleville travels to upper Bergen County and a game with Immaculate Heart. Tentatively, game time is set for 7:30 p.m.

Versus Teaneck last Tuesday, Belleville's offensive attack never got off the ground.

"I don't know what gear we were in," Fuccello said. "They (Teaneck) weren't running it up by any means. He (Teaneck) coach Curtis March) used a lot of players, we just didn't play well against any of them."

Belleville, which has never beaten Teaneck in NNJIL play, trailed 23-4 after one quarter and 33-15 by intermission. On a bright note, Belleville outscored Teaneck 10-11 in the second quarter.

The second half was a big downer for the Lady Bucs. The team managed just four points over the

last 16 minutes, scoring two in the third quarter and two in the fourth. Jennifer Abrams led Belleville with six points. Colleen Mannion had five and Yanina Calvi and Danielle DeWor scored four points each.

For Teaneck, Stephanie Cheatham scored 18 points to lead a balanced attack. Four Highwayswomen scored in double figures.

Against Clifton, the results were a little closer, although Belleville led by 26 points. This time, the offense was a little more effective, scoring 31 points.

Mannion and DeWor scored seven points each for Belleville. Liz Ramirez finished with five, Zulay Fiallos scored four and Calvi, Abrams, Kris Caputo and Mary Campbell had two points each.

"We haven't been very cohesive," Fuccello said. "We'll play a good quarter at times and we'll have some good individual efforts, but we're not clicking as a team. Some of the kids have missed practice because of the flu, and not having full team holds us back."

The team was optimistic about this week's games against Paramus and Hackensack. Belleville is hoping for its first Pacific Division victory since January of '89.

Kim Juliano making her mark as girl's basketball coach

She brings carisma, enthusiasm and a willingness to learn to her new job. Those are three pretty good prerequisites for success on the coaching level and that's exactly what Kim Juliano brings as a volunteer assistant to the Belleville girls' basketball program.

Juliano, 22, is a graduate of North Carolina State University. She majored in mathematics and is currently working as a math teacher in the Belleville school system. This is her first coaching assignment and Juliano is quite enthused with the job.

"Yes, it's something I really enjoy," she said. "I like working with the kids and being able to teach them. It's really quite enjoyable."

"Kim has done an excellent job," said JV coach Karen Portuese. "She's been a big help to me on this level and the player really enjoy playing for her."

Head coach Karen Fuccello is also quite impressed.

"She always has something nice to say," Fuccello said of her newest coach. "Kim is a pleasure to work with and her willingness to learn will take her a long way in this business."

Juliano has become the unofficial math tutor for the athletes in the winter sports program at Belleville.

"I'm helping out the boys and girls basketball players," Juliano said. "I enjoy working with the kids and am happy to help them with their school work if I can."

Juliano is a 1986 graduate of Hanover Park High School. She played varsity basketball for two years there. In college, she competed in intramural athletics.

Good luck to Juliano in her new coaching assignment.

M.L.



Kim Juliano

RECREATION ROUNDUP

Attention all Teachers!

The Belleville Recreation Department announces that applications for Summer Recreation positions are now available.

Playground director positions are open to teachers and those who will have completed their third year of college by summer 1991.

Preference is given to full-time teachers and college seniors majoring in recreation, physical education, teaching and psychology. Previous leadership in recreation settings and/or outstanding athletic ability is a plus.

Applicants must also have good organizational skills. There will be few positions open and person desiring summer employment are urged to apply promptly.

Persons wishing to apply should phone the Recreation Department office at 450-3422 weekdays for applications. Interviews will be scheduled in the Springtime. Potential applicants must be teachers or college students working toward a teaching degree and must be available for seven straight weeks, from June 24 to Aug. 9.

All returning employees who qualify must also re-apply.

League director needed

The Belleville Dept. of Recreation and Cultural Affairs is seeking one of two adult men to serve as league directors for Spring and Fall sports.

The part-time positions entail supervision of league games/personnel, assigning umpires/referees, re-scheduling rainouts, writing press releases and charting players' participation records.

Interested persons must be Belleville residents and available five nights a week and Saturdays. Qualified applicants must be sports-minded, responsible, and work well with people. The positions would also be good experience for college students majoring in recreation/physical education. For further information or to apply contact the Recreation Department at 450-3422.

Pre-school registration 1991

The Belleville Dept. of Recreation and Cultural Affairs is accepting registrations for the pre-school play program for 4-year-old children.

The program consists of games, stories, songs, art, outside play when weather permits, short rest periods and occasional holiday parties especially designed for pre-school children.

Sessions are from 9 a.m. to 11 a.m. five days a week with classes limited to 23 students. The cost of the 32-week session is \$100. The Mothers of the children accepted must participate by serving one duty day about every 8 or 9 days according to a published schedule. School will begin on Monday, Sept. 16, 1991 under the leadership of Mary Anne Lopreato, and will run through May 1992.

Children born between Oct. 1986 to Sept. 1987 who will enter kindergarten in Sept. 1992 are eligible. Participants must be Belleville residents. Since there are just a limited number of openings, applications will be accepted on a first come first served basis.

For further information and enrollment, contact the Belleville Recreation Dept. at 450-3422 as soon as possible, Monday to Friday, 8:30 a.m. to 4 p.m.

Softball Clinic

The Belleville Recreation Department is sponsoring a Girls' Softball Clinic for resident Belleville girls who are students at Belleville High School or Belleville Middle School. The program will be held Fridays at the Middle School Boys Gym from 6 to 8 p.m. on the following dates:

Jan. 4, 11, 18, 25, Feb. 1 and 8, March 1. The intent of the clinic is to prepare girls for tryouts to the Suburban Girls and/or the High School softball teams.

Each session is supervised and an aspect of the game will be demonstrated and practiced. Participants must provide their own gloves and must wear sneakers. No advance registration is required.



A plaque from United Way was presented to the employees of Wallace & Terman, Inc. in recognition for their outstanding Community Services to the people of Essex and West Hudson Counties. (From left to right) Presenting the award was Michael Layton, Manager Human Resources, Wallace & Terman; Gloria Hokanson, Secretary; Nicholas Scurello, President, who received the award; Irene Hayes, Treasurer; and James Laudat, Vice President of Walco Charity.

Buc Shots

(continued from page 11)

Wednesday night, January 15, 1991, we'll know a lot more about this situation.

20 years ago, our country asked servicemen to go to a foreign land and go to war. Those guys didn't want to be there any more than the current group of young men and women currently stationed in Saudi Arabia. They went because of love of country and commitment. They weren't supported wholeheartedly by our country back then. It took almost 20 years for the American people to come to grips with Vietnam. (Remember, it was never declared a war.)

Ronald Reagan put it best back on Veterans Day, 1988, as his presidency was winding down. At a speech at the Vietnam Veteran's Memorial, he said that young men and women should not be asked to fight in a war unless we're prepared to let them win.

If this does come down to confrontation, let's pray it is handled quickly and that our men and women come home to the full support and love of the American people. It looks like America is behind our troops this time.

God bless our people in Saudi Arabia. Get home soon, a nation misses you!

LAST WEEKS QUIZ

In Super Bowl III, Matt Snell scored the Jets only touchdown. It was scored in the second quarter. The Jets led, 7-0 at the half. Jim Turner kicked three field goals in the second half to seal the win. The Jets beat the Oakland Raiders, 27-23 in the AFL title game at Shea Stadium. The Baltimore Colts beat the Cleveland Browns, 34-0 for the NFL championship.

FOR THIS WEEK

In Super Bowl XVI, the Cincinnati Bengals and San Francisco 49ers met for the championship. Where was the game played? Who were the quarterbacks for the respective teams? What was the final score of the game? Who was the 49er kicker who kicked four field goals in the game?

NFL PICKS

It seems kind of unimportant, with the world events taking place. But there should be AFC and NFC title games this weekend. I predicted Buffalo and San Francisco back in September and, obviously, I've got stick with that pick.

Marcus Allen of the L.A. Raiders, when asked by O.J. Simpson of NBC following the win over Cincinnati if there was pressure in the playoff game said, "There's pressure in the Presian Gulf. This is football." Amen.

J.V. girls' basketball shows improvement

By Mike Lambert

Optimism continues to grow for the Belleville girls' basketball program. Although the Lady Bucs have struggled somewhat this winter, head coach Karen Fucello is working with a young team who should only get better with varsity experience.

On the junior varsity level, the prognosis is also favorable. The team, under the direction of coach Karen Portuese and assistant Kim Juliano, has a 2-5 record. More important than the record is that the team has been quite competitive of late, winning two of its last three games.

Belleville started the season with a 47-30 loss to Ridgewood. The girls were much more organized in its next game, a 39-29 loss to Immaculate Heart. The team lost a 37-18 decision to Nutley, then came within seven points of a good Paramus Catholic team, bowing 38-31.

That performance was a springboard to the teams first victory in its next game, Belleville routed Barringer 40-15 and after a one sided loss to Teaneck, Belleville won an overtime game with

Clifton, 39-35 last Thursday.

"The kids are working hard and showing improvement," Portuese said. "Winning an overtime game meant a lot for the team. We're very young, and we should get better as the year goes on."

In the victory over Clifton, sophomore Kris Caputo led the way with 13 points. Freshman Adrienne Walsh scored eight, sophomore Kim Salernitano scored seven, sophomore Tara Galio had five and sophomore Mary Campbell, freshman Youlissa Giron and sophomore Suzanne Sprick scored two points each.

In the Barringer game, Caputo had nine, Salernitano scored seven, sophomores Melanie VanDam and Kim O'Mara had six each, Walsh, Galio and freshman Michelle Pzonka scored four a piece.

A freshman, Tracey Gray, has also been impressive for the JV squad this winter.

"We've already progressed 95% from the start of the season," Portuese said. "If we stay on the right track, we should be in good shape for next season."

Father Eusebio Kino is part of Italian heritage

(continued from page 7)

offspring (often illegitimate) of Spanish nobility — and the Pima. Pima Indians did not appreciate having their "neighborhoods" invaded for labor and for sex favors. When Pima tribes or individuals resisted, they became victims of the most horrid Spanish cruelties, up to and including execution. Thank the Lord, Father Kino usually was able to calm tribal rebellion and Spanish stupidity.

Gospel of Saint Ignatius

At this point it should be noted that Father Kino was among many missionaries who persevered in spreading the Gospel according to Saint Ignatius — that is, the Jesuit interpretation of Mark, Matthew, Luke and John — when Spanish settlers were trying to carve out fortunes for themselves and could not care less about Saint Ignatius, nevermind the Beatitudes.

Furthermore, as Father Kino knew so well, the Indian tribes were as different from one another as Spaniards were from — well, from ethnic-Italian, Austrian-born missionary-explorers.

Father Kino understood, in his "Italian" tolerance, that most Indian rituals should be allowed to continue their "pegan" ways even among the converted. The Pima rituals endured, including — and please do not report this to the holier-than-thous of our day — mass drunkenness following Mass. (After all ethnic-Irish and ethnic-Italian folks, among others, still stop occasionally to have a glass of Irish coffee or spirited gear juice when Mass, in our day!)

When civilizations touch

The attack upon Christopher Columbus by the liberal powers in academia and in the media has also been directed at Father Kino and others like him, who set down the Cross of Jesus with the first Spanish conquest. But Father Kino brought good will and he found good will. He wrote:

"God willing, hundreds and later thousands will be gathered into the bosom of our sweet, most holy Mother Church, for about five thousand of the neighboring Indians have come asking at this time with most ardent pleading for holy baptism. They envy the happy lot of those in the three new settlements."

When civilizations touch, they usually end in political war before cultural embrace, often approximating the decline and fall of either or both of the two conflicting civilizations. Such conflicts among civilizations are going on in our time. Yet, a full understanding of civilizations in conflict demands an understanding of the men and the women on the frontiers of these civilizations, and Father Eusebio Kino, like Christopher Columbus, was one of these. This article will close then with an extensive quote from a letter Father Kino wrote in 1692, following his visit to a Pima village:

"I spoke to them (Pima Indians) of the word of God, and on the map of the world I showed them the lands, the rivers, and the seas over which our fathers had come from afar to bring them the saving knowledge of our Holy Faith. I told them also how in ancient times the Spaniards were not Christian, how Santiago (St. James) came to teach them the faith, and how in the 14 years he was able to baptize only a few, because of which the Holy Apostle was discouraged, but that the Holy Virgin appeared to him and consoled him, promising that the Spaniards would convert the rest of the people of the world."

"They listened with pleasure to these and other talks concerning God, Heaven, and hell, told me they wished to be Christian, and gave me some infants to baptize."

"Godfather Kino... but no one has made a movie and no one reads about Father Eusebio Kino!

SHERIFF'S SALE
SUPERIOR COURT J-131
JERSEY, CHANCERY DIVISION,
ESSEX COUNTY, DOCKET NO. F-1412-90, THE DIMS SAVINGS BANK OF NEW JERSEY, a banking corp. organized and existing under the laws of the State of N.J. PLAINTIFF VS. TIMOTHY H. LINDSAY & JACQUELINE R. LINDSAY, now DEFENDANTS. Execution For Sale of Mortgage Premises.
By virtue of the above stated writ of Execution, to me directed, I shall expose for sale by Public Auction, in SHERIFF'S OFFICE, Essex County Courts Building in Newark, on Tuesday, the 12th day of February 1991, at one-thirty P.M. (Preselling Time) BEING Property located in the Township of Millburn, County of Essex and State of New Jersey.
BEING also known as Lot 10 in Block 312 in the Official Tax Map of the Township of Millburn.
BEING commonly known as 130 Myrtle Avenue, Millburn, New Jersey, and having the approximate dimensions of 50 x 125 BEING located on the easterly side of Myrtle Avenue, distant 278 feet northerly therefrom from its intersection with the northerly side of Millburn Avenue.
The concise legal description does not constitute a full legal description of the premises, and the full legal description can be found in the Mortgage dated August 25, 1988, recorded on September 22, 1988, in the Office of the Register of Deeds, County in Book 5628 of Mortgages at Page 737, ET SEQ.
A DEPOSIT OF 20% OF THE BID PRICE IN CASH OR CERTIFIED FUNDS IS REQUIRED AT THE TIME OF SALE.
The approximate amount of the Judgment to be satisfied by said sale is the sum of ONE HUNDRED THIRTY-THREE THOUSAND THREE HUNDRED TWO DOLLARS AND FORTY-FIVE CENTS (\$133,302.45), together with the costs of this sale.
The Sheriff reserves the right to adjourn the sale from time to time as provided by Law.
NEWARK, N.J. January 7, 1991
THOMAS J. DALESIO, Sheriff
Mackenzie, Welt, Dume, Maher & North, Attorneys

Belleville Times
Jan. 17, 24, 31 & Feb. 7, 1991
Fee: \$99.64

FREE VOLUNTEER TAX ASSISTANCE

1-800-424-1040

ASK FOR SITE NEAREST YOU.

Cancun

\$379

FROM

So low you can't say no.

8 days 7 nights

INCLUDES: roundtrip non stop Saturday departures from Newark via AeroCancun, hotel accommodations, airport transfers, Mexican tax and U.S. Departure tax.

Departure Dates:

Jan. 5, 12, 19, 26

Natley Travel Service, Inc.

11 Brighton Rd., Clifton, N.J.

235-1234 or 777-0440

Office Hours: Monday - Friday 9-7; Sat. 10 - 2.

Stay on top of the news...



Read Belleville Times

FREE HOT WAX
COUPON SPECIAL CAR WASH
\$500 + Tax
For Full Service
Exterior \$4.25 + Tax
(With This Coupon)
EXPIRES 1/31/91

FRANKIE'S FUTURMATIC BRUSHLESS CAR WASH
305 Broad St. • Bloomfield
748-9459
Open Mon. Sat. 8-6 and Sun. 8-3

ACT SAVE BIG NOW!

SEE HUNDREDS OF NEW & USED CARS AND TRUCKS! DRIVE 10 MINUTES TO SAVE BIG!

\$3000 CASH BACK OR 7.9% FINANCING AVAILABLE!

BUICK



NEW 1990 REGAL CUSTOM

Buick V6 eng., auto. trans., P/S/B/winds/locks/trunk rise/antenna/seat, door edge grds., rr. dgr., 2spd. wiper, cruise, lighted visor mirror, AM/FM st. cass., wire whl. covers, elec. instrumentation, steering wheel radio controls, seek/scan, auto reverse, clock, concert sound, carpet savers w/inserts. Stk #2307. Vin#L1455280. Price includes \$1000 factory rebate & \$600 1st time byr. prgm. if qualified.

MSRP: \$18,551

DISCOUNT: \$4556

\$13,995

CHEVY TRUCKS



NEW 1991 S10 BLAZER 4x4

Chevy, 2dr, 4.3L EFI V6 eng., auto. OD front, P/S, P/B/winds/locks, lugg. carrier, rear dgr./wind air deflector/wiper, spare carrier, electric tailgate fl., 2-tone paint, AM/FM st. cass. with SC/SK, clk., cruise, alum. whls., deep tint glass, int. wipers, blk. whl. open mold., Dark Blue/Frost White. Conf#M017481. Stk#K00351. Price includes \$500 factory rebate.

MSRP: \$18,987

DISCOUNT: \$2612

\$16,375

BONUS!
EXTRA \$500 OFF
for cash or 7.9% financing

CHEVROLET



1990 REATTA

Buick, 3.8L V6 eng., auto. trans., pwr. strng./brakes/winds/seat, remote keyless entry, trunk pull down pkg., AM/FM st. cass., rly. AIR, cruise. Red. Stk#5913. Vin#K8905390. 6,325 brass hot miles.

ORIG. MSRP: \$28,905 DISCOUNT: \$10,910

\$17,995



NEW 1991 LESABRE CUSTOM SEDAN

Buick, 4dr, 2.6L V6 eng., auto. trans., P/S/B/winds/locks/trunk rise/antenna/seat, door edge grds., rr. dgr., 2spd. wiper, cruise, lighted visor mirror, AM/FM st. cass., wire whl. covers, elec. instrumentation, steering wheel radio controls, seek/scan, auto reverse, clock, concert sound, carpet savers w/inserts. Stk #2205. Vin#L1455280. Price includes \$1000 factory rebate & \$600 1st time byr. prgm. if qualified.

MSRP: \$18,719 DISCOUNT: \$2324

\$16,495



NEW 1991 SKYLARK

Buick, 4dr, 4-cyl. 1.8L V4 eng., auto. trans., P/S/B/winds/locks/trunk rise/antenna/seat, door edge grds., rr. dgr., 2spd. wiper, cruise, lighted visor mirror, AM/FM st. cass., wire whl. covers, elec. instrumentation, steering wheel radio controls, seek/scan, auto reverse, clock, concert sound, carpet savers w/inserts. Stk #2205. Vin#L1455280. Price includes \$1000 factory rebate & \$600 1st time byr. prgm. if qualified.

MSRP: \$12,688 DISCOUNT: \$2293

\$10,395



NEW 1991 REGAL CUSTOM SEDAN

Buick, 4dr, V6 eng., auto. trans., P/S/B/winds/locks/trunk rise/antenna/seat, door edge grds., rr. dgr., 2spd. wiper, cruise, lighted visor mirror, AM/FM st. cass., wire whl. covers, elec. instrumentation, steering wheel radio controls, seek/scan, auto reverse, clock, concert sound, carpet savers w/inserts. Stk #2205. Vin#L1455280. Price includes \$1000 factory rebate & \$600 1st time byr. prgm. if qualified.

MSRP: \$18,071 DISCOUNT: \$3476

\$14,595



NEW 1991 CENTURY CUSTOM SEDAN

Buick, 4dr, V6 eng., auto. trans., P/S/B/winds/locks/trunk rise/antenna/seat, door edge grds., rr. dgr., 2spd. wiper, cruise, lighted visor mirror, AM/FM st. cass., wire whl. covers, elec. instrumentation, steering wheel radio controls, seek/scan, auto reverse, clock, concert sound, carpet savers w/inserts. Stk #2205. Vin#L1455280. Price includes \$1000 factory rebate & \$600 1st time byr. prgm. if qualified.

MSRP: \$17,333 DISCOUNT: \$3537

\$13,795



NEW 1990 SUBURBAN

Chevy, 4dr, 4.3L V6 eng., auto. trans., P/S/B/winds/locks/trunk rise/antenna/seat, door edge grds., rr. dgr., 2spd. wiper, cruise, lighted visor mirror, AM/FM st. cass., wire whl. covers, elec. instrumentation, steering wheel radio controls, seek/scan, auto reverse, clock, concert sound, carpet savers w/inserts. Stk #2205. Vin#L1455280. Price includes \$1000 factory rebate & \$600 1st time byr. prgm. if qualified.

MSRP: \$26,018 DISCOUNT: \$4033

\$21,995



1991 LUMINA APV CL

Chevy, 4dr, 2.6L V6 eng., auto. trans., P/S/B/winds/locks/trunk rise/antenna/seat, door edge grds., rr. dgr., 2spd. wiper, cruise, lighted visor mirror, AM/FM st. cass., wire whl. covers, elec. instrumentation, steering wheel radio controls, seek/scan, auto reverse, clock, concert sound, carpet savers w/inserts. Stk #2205. Vin#L1455280. Price includes \$1000 factory rebate & \$600 1st time byr. prgm. if qualified.

MSRP: \$18,336 DISCOUNT: \$2831

\$15,495



NEW 1991 CHEVY VAN

Chevy, 4dr, 4.3L V6 eng., auto. trans., P/S/B/winds/locks/trunk rise/antenna/seat, door edge grds., rr. dgr., 2spd. wiper, cruise, lighted visor mirror, AM/FM st. cass., wire whl. covers, elec. instrumentation, steering wheel radio controls, seek/scan, auto reverse, clock, concert sound, carpet savers w/inserts. Stk #2205. Vin#L1455280. Price includes \$1000 factory rebate & \$600 1st time byr. prgm. if qualified.

MSRP: \$14,426 DISCOUNT: \$1461

\$12,995



1990 LUMINA APV CL

Chevy, 4dr, 2.6L V6 eng., auto. trans., P/S/B/winds/locks/trunk rise/antenna/seat, door edge grds., rr. dgr., 2spd. wiper, cruise, lighted visor mirror, AM/FM st. cass., wire whl. covers, elec. instrumentation, steering wheel radio controls, seek/scan, auto reverse, clock, concert sound, carpet savers w/inserts. Stk #2205. Vin#L1455280. Price includes \$1000 factory rebate & \$600 1st time byr. prgm. if qualified.

MSRP: \$18,987 DISCOUNT: \$4512

\$14,995



1991 S10 4DR BLAZER

Chevy, 4.3L EFI V6 eng., 4spd. auto. O/D trans., elec. remote ext. mirrors, spare wheel & tire carrier, H.D. battery, light duty trailing special equip., lighted visor mirror, air dmp. bag lumps. Stk #5933. Vin#M2226816. 1,307 demd. mi.

ORIG. MSRP: \$20,100 DISCOUNT: \$4805

\$15,295



1990 LESABRE CUSTOM SEDAN

Buick, V6 engine, auto. trans., P/S, P/B, P/winds, P/locks, P/seat, pulse wipers, rr. delag, cruise, st. cass., wire whl. covs., fl. mats, dr. edge grds., w/s/w tires, SE optn. pkg. Stk #2205. Vin#L1455280. Price includes \$1000 factory rebate. 9,850 demo mi.

ORIG. MSRP: \$19,018 DISCOUNT: \$4423

\$14,595

CREDIT PROBLEMS?

NO PROBLEM!

No Credit Application
Refused! See Us Now!



1991 CAPRICE CLASSIC

Chevy, 4dr, 5.0L V8 eng., auto. trans., P/S/B/winds/locks/trunk rise/antenna/seat, door edge grds., rr. dgr., 2spd. wiper, cruise, lighted visor mirror, AM/FM st. cass., wire whl. covers, elec. instrumentation, steering wheel radio controls, seek/scan, auto reverse, clock, concert sound, carpet savers w/inserts. Stk #2205. Vin#L1455280. Price includes \$1000 factory rebate & \$600 1st time byr. prgm. if qualified.

MSRP: \$20,800 DISCOUNT: \$5235

\$15,555



NEW 1990 LUMINA

Chevy, 4dr, 2.6L V6 eng., auto. trans., P/S/B/winds/locks/trunk rise/antenna/seat, door edge grds., rr. dgr., 2spd. wiper, cruise, lighted visor mirror, AM/FM st. cass., wire whl. covers, elec. instrumentation, steering wheel radio controls, seek/scan, auto reverse, clock, concert sound, carpet savers w/inserts. Stk #2205. Vin#L1455280. Price includes \$1000 factory rebate & \$600 1st time byr. prgm. if qualified.

MSRP: \$15,661 DISCOUNT: \$2864

\$12,995



NEW '91 BERETTA GT

Chevy, 4dr, 2.6L V6 eng., auto. trans., P/S/B/winds/locks/trunk rise/antenna/seat, door edge grds., rr. dgr., 2spd. wiper, cruise, lighted visor mirror, AM/FM st. cass., wire whl. covers, elec. instrumentation, steering wheel radio controls, seek/scan, auto reverse, clock, concert sound, carpet savers w/inserts. Stk #2205. Vin#L1455280. Price includes \$1000 factory rebate & \$600 1st time byr. prgm. if qualified.

MSRP: \$18,069 DISCOUNT: \$5130

\$12,945



NEW '91 CAMARO

Chevy, 4dr, 2.6L V6 eng., auto. trans., P/S/B/winds/locks/trunk rise/antenna/seat, door edge grds., rr. dgr., 2spd. wiper, cruise, lighted visor mirror, AM/FM st. cass., wire whl. covers, elec. instrumentation, steering wheel radio controls, seek/scan, auto reverse, clock, concert sound, carpet savers w/inserts. Stk #2205. Vin#L1455280. Price includes \$1000 factory rebate & \$600 1st time byr. prgm. if qualified.

MSRP: \$13,869 DISCOUNT: \$1074

\$12,795



NEW 1991 CAVALIER VL COUPE

Chevy, 2.2L EFI L4 eng., auto. trans., Power/S/B, rear delagator, air, floor mats, cloth buckets. Stk #323. Vin#M7155527. Price includes \$500 factory rebate & \$600 1st time byr. prgm. if qualified.

MSRP: \$9,805 DISCOUNT: \$1610

\$8,195

Price(s) include(s) factory incentives & all costs to be paid by a consumer, except for licensing, registration and taxes.

939-6800 • ROUTE 17, E. RUTHERFORD

JUST NORTH OF ROUTE 3 ON ROUTE 17 • OPEN DAILY 9-9; SAT. 9-6 • CALL FOR EASY DIRECTIONS

SHERIFF'S SALE
SUPERIOR COURT J-128
SUPERIOR COURT OF NEW JERSEY, CHANCERY DIVISION, ESSEX COUNTY, DOCKET NO. F-4011-90, 2 BROAD STREET ASSOCIATES, N.J. General Partnership PLAINTIFF vs. K.C. OF NEW YORK CORP., A Corp., et al. DEFENDANTS, Execution For Sale of Mortgaged Premises.

By virtue of the above stated writ of Execution, to me directed, I shall expose for sale by Public Auction, in Sheriff's Office, Essex County Courts Building in Newark, on Tuesday, the 12th day of February 1991, at one-thirty P.M., (Prevaling Time) all the following tract or parcel of land and provision heretofore described, situate, lying and being in the Township of Bloomfield, County of Essex and State of New Jersey: BEGINNING, at a point in the northerly line of Broad Street, where the same is intersected by the easterly line of Bloomfield Avenue thence

1) north 28 degrees 08 minutes west, along said line of Bloomfield Avenue 152.61 feet, thence
2) north 61 degrees 52 minutes east 55.17 feet, thence
3) north 86 degrees 21 minutes east 58.80 feet to the westerly line of Broad Street, thence
4) south 3 degrees 28 minutes west, along said line of Broad Street, 151.40 feet to an angle point, thence
5) south 77 degrees 40 minutes west, along said northerly line of Broad Street 26.84 feet to the point and place of BEGINNING, SAID premises being commonly known as 2 Broad Street, Bloomfield, New Jersey. BEING as shown on Lot 1, Block 243 on the official tax map of Bloomfield, N.J. A DEPOSIT OF 20% OF THE BID PRICE IN CASH OR CERTIFIED FUNDS IS REQUIRED AT THE TIME OF SALE.

The approximate amount of the Judgment to be satisfied by said sale is the sum of FOUR MILLION TWENTY-THREE THOUSAND SEVENTY-EIGHT DOLLARS AND NINETY-SEVEN CENTS (\$4,023,787.97), together with the costs of this sale.

The Sheriff reserves the right to adjourn the sale from time to time as provided by Law.

NEWARK, N.J. January 7, 1991
THOMAS J. D'ALESSIO, Sheriff
Fred A. Iannaccone, Attorney
Belleville Times
Jan. 17, 24, 31 & Feb. 7, 1991
Fee \$103.44 B90-617

SHERIFF'S SALE
SUPERIOR COURT J-128
SUPERIOR COURT OF NEW JERSEY, CHANCERY DIVISION, ESSEX COUNTY, DOCKET NO. F-4011-90, CITICORP MORTGAGE, INC. PLAINTIFF vs. ARLINE E. WOODBURY, et al. DEFENDANTS, Execution For Sale of Mortgaged Premises.

By virtue of the above stated writ of Execution, to me directed, I shall expose for sale by Public Auction, in Sheriff's Office, Essex County Courts Building in Newark, on Tuesday, the 22nd day of January 1991, at one-thirty P.M. (Prevaling Time), all the following tract or parcel of land and provision heretofore described, situate, lying and being in the Township of Montclair, County of Essex and State of New Jersey: BEGINNING, at a point in the northerly line of Broad Street, where the same is intersected by the easterly line of Bloomfield Avenue thence

1) north 28 degrees 08 minutes west, along said line of Bloomfield Avenue 152.61 feet, thence

A full legal description can be found in the Office of the Register of Essex County. A DEPOSIT OF 20% OF THE BID PRICE IN CASH OR CERTIFIED FUNDS IS REQUIRED AT THE TIME OF SALE.

The approximate amount of the Judgment to be satisfied by said sale is the sum of THREE HUNDRED EIGHTY-FIVE THOUSAND FIVE HUNDRED FIFTY-SEVEN DOLLARS AND SIXTY-THREE CENTS (\$385,515.57), together with the costs of this sale.

The Sheriff reserves the right to adjourn the sale from time to time as provided by Law.

NEWARK, N.J. December 17, 1990
THOMAS J. D'ALESSIO, Sheriff
Katz, Entin, Levine & Kurzwil, Attorneys

The Belleville Times
December 27, 1990
January 3, 10, 17, 1991
Fee \$73.32 B90-579

SHERIFF'S SALE
SUPERIOR COURT J-128
SUPERIOR COURT OF NEW JERSEY, CHANCERY DIVISION, ESSEX COUNTY, DOCKET NO. F-2338-90, BRANCO PLUS MORTGAGE CORPORATION, a corp. PLAINTIFF vs. LARRY SELLERS, et al. DEFENDANTS, Execution For Sale of Mortgaged Premises.

By virtue of the above stated writ of Execution, to me directed, I shall expose for sale by Public Auction, in Sheriff's Office, Essex County Courts Building in Newark, on Tuesday, the 22nd day of January 1991, at one-thirty P.M. (Prevaling Time).

THE PROPERTY TO BE SOLD IS LOCATED IN THE CITY OF NEWARK IN THE COUNTY OF ESSEX AND STATE OF NEW JERSEY. COMMONLY KNOWN AS: 127 South Mount Avenue, Newark, New Jersey. TAX LOT NO. 13 IN BLOCK NO. 4032 DIMENSIONS OF LOT (APPROXIMATELY) 30 FEET WIDE BY 100 FEET LONG. NEAREST CROSS STREET: SITUATE ON THE NORTHWESTERLY SIDE OF MOUNT AVENUE 566 FEET FROM THE NORTHWESTERLY SIDE OF GROVE TERRACE.

A full legal description can be found in the Office of the Register of Essex County in Book 4793, Page 517.

A DEPOSIT OF 20% OF THE BID PRICE IN CASH OR CERTIFIED FUNDS IS REQUIRED AT THE TIME OF SALE.

The approximate amount of the Judgment to be satisfied by said sale is the sum of FORTY THOUSAND SEVEN HUNDRED NINETY-EIGHT DOLLARS AND SIXTY-ONE CENTS (\$46,798.61), together with the costs of this sale.

The Sheriff reserves the right to adjourn the sale from time to time as provided by Law.

NEWARK, N.J. December 17, 1990
THOMAS J. D'ALESSIO, Sheriff
Zucker, Goldberg, Becker & Ackerman, Attorneys

The Belleville Times
December 27, 1990
January 3, 10, 17, 1991
Fee \$92.12 B90-580

SHERIFF'S SALE
SUPERIOR COURT J-129
SUPERIOR COURT OF NEW JERSEY, CHANCERY DIVISION, ESSEX COUNTY, DOCKET NO. F-4097-90, NATIONAL WESTMINSTER BANK NJ, a banking corp. PLAINTIFF vs. RICARDO PENIA, et al. DEFENDANTS, Execution For Sale of Mortgaged Premises.

By virtue of the above stated writ of Execution, to me directed, I shall expose for sale by Public Auction, in Sheriff's Office, Essex County Courts Building in Newark, on Tuesday, the 12th day of February 1991, at one-thirty P.M. (Prevaling Time).

Property to be sold is in the City of Newark, County of Essex and State of New Jersey. Commonly known as 681-683 Springfield Avenue, Newark, New Jersey Lot 5, Block 56.38 on the Tax Map of the City of Newark 63.12' x 64.15' (Irregular).

TOWNSHIP OF BELLEVILLE

TOWNSHIP OF AUDIT REPORT FOR 1989

COMBINED COMPARATIVE BALANCE SHEET

Balance Dec. 31, 1989

Balance Dec. 31, 1988

Assets and Deferred Charges

Cash and Investments

Taxes, Assessments, License and Utility Charges Receivable

Prospective Assessments Funded

Property - Included for Taxes - Assessed

Value

Accounts Receivable and Inventory

Interfund Accounts Receivable

Fixed Capital Authorized and Uncompleted - Utility

Fixed Capital - Utility

Deferred Charges to Taxation - General

Deferred Charges to Future Revenue

LIABILITIES, RESERVES AND FUND BALANCE

Bonds and Notes Payable

Improvement Authorizations

Interfund Accounts Payable

Other Liabilities and Special Funds

Amortization of Debt of Fixed Capital

Acquired or Authorized

Reserve for Certain Assets Receivable

Fund Balance

Roads and Notes Authorized but Not Issued

COMPARATIVE STATEMENT OF OPERATIONS AND CHANGE IN FUND BALANCE - CURRENT FUND

Revenue and Other Income

Fund Balance Utilized

Collection of Current Tax Levy

Collection of Delinquent Taxes and Tax Title Liens

Increase in Deferred Local School District Tax

Miscellaneous - From Other than Local Property Tax Levies

Expenditures

Budget Expenditures

Nonbudgetary Expenditures

Local School District Tax

County

Other Expenditures

Excess in Revenue

Nearest Cross Street - South 18th Street
A full legal description can be found in the Office of the Register of Essex County mortgage book 5738 page 391.

A DEPOSIT OF 20% OF THE BID PRICE IN CASH OR CERTIFIED FUNDS IS REQUIRED AT THE TIME OF SALE.

The approximate amount of the Judgment to be satisfied by said sale is the sum of TWO HUNDRED EIGHTY-FIVE THOUSAND TWO HUNDRED AND TWENTY-NINE DOLLARS AND SEVENTY-SEVEN CENTS (\$286,229.77), together with the costs of this sale.

The Sheriff reserves the right to adjourn the sale from time to time as provided by Law.

NEWARK, N.J. January 7, 1991
THOMAS J. D'ALESSIO, Sheriff
Kovacs, Rader & Feldman, Attorneys
Belleville Times
Jan. 17, 24, 31 & Feb. 7, 1991
Fee \$82.72 B90-618

Adjustment to Income before Fund Balance:

Expenditures Included Above Which Are, by Statute, Deferred Charge to Budget of Succeeding Year

Statutory Excess to Fund Balance

Fund Balance

Balance January 1

Budget Utilized as Anticipated Revenue

Balance December 31

COMPARATIVE STATEMENT OF OPERATIONS AND CHANGE IN FUND BALANCE - WATER UTILITY OPERATING FUND

Year 1989

Year 1988

Revenue and Other Income

Collection of Water Rates

Miscellaneous - From Other than Water Rates

Expenditures

Budget Expenditures

Operating

Water Service

Deferred Charge and Statutory Expenditures

Deficit in Operations to be Raised in Budget of Succeeding Year

Excess in Revenue

Fund Balance

Balance December 31

RECOMMENDATIONS

That accumulated expenditures be reviewed to insure compliance with the provisions of N.J.S.A. 40A:11-4.

That various accounts receivable, including State and County Aid, demolition fees, revenue, other accounts receivable and certain bank charges be reviewed and appropriate action taken as to collection or cancellation by Resolution of the Board of Commissioners.

That more care be exercised in the maintenance of the computerized general ledger including investigation of certain delinquent balances for collection or inclusion in the next tax sale, location of missing tax lien certificates, computer data input, and that tax controls be maintained and proven to detailed listings of balances.

That approval for the Petty Cash Fund be obtained from the Division of Local Government Services.

That certain outstanding checks be reviewed and appropriate action taken as to rescission or cancellation by Board Resolution.

That department collection procedures be reviewed to ensure compliance with the provisions of N.J.S.A. 40A:15.

That certain liabilities for sewer user charge overpayments, as determined by the Passaic Valley Sewerage Commissioners, other aged accounts payable and reserve for revaluation be reviewed and determination made as to expenditure or cancellation by Resolution of the Board of Commissioners.

That certain unfunded improvement costs be raised in the 1991 Budget.

That master controls be established for activity of the Water Utility Consumer Accounts Receivable and the balances for these accounts be reconciled to master control entries.

That the Water Utility Inventory of materials and supplies be updated on a yearly basis.

That a Petty Cash Fund be established for the Free Public Library. (Approval of the Division of Local Government Services required.)

That bank accounts of the Free Public Library be reconciled on a monthly basis.

That inventories of fixed assets be updated for all acquisitions and disposals.

The attached summary was prepared from the Report of Audit of the Township of Belleville, County of Essex for the calendar year 1989, filed by Joseph J. Faccione, Registered Municipal Accountant of the firm of Samuel Klein and Company and is published in compliance with N.J.S.A. 40A:5-7. The Report is on file at the Township Clerk's office and may be inspected by any interested person.

THE BELLEVILLE TIMES
January 17, 1991
Fee: \$125.02

THE BELLEVILLE TIMES
January 17, 1991
Fee: \$125.02

THE BELLEVILLE TIMES
January 17, 1991
Fee: \$125.02

THE BELLEVILLE TIMES
January 17, 1991
Fee: \$125.02

THE BELLEVILLE TIMES
January 17, 1991
Fee: \$125.02

THE BELLEVILLE TIMES
January 17, 1991
Fee: \$125.02

THE BELLEVILLE TIMES
January 17, 1991
Fee: \$125.02

THE BELLEVILLE TIMES
January 17, 1991
Fee: \$125.02

THE BELLEVILLE TIMES
January 17, 1991
Fee: \$125.02

THE BELLEVILLE TIMES
January 17, 1991
Fee: \$125.02

THE BELLEVILLE TIMES
January 17, 1991
Fee: \$125.02

THE BELLEVILLE TIMES
January 17, 1991
Fee: \$125.02

THE BELLEVILLE TIMES
January 17, 1991
Fee: \$125.02

THE BELLEVILLE TIMES
January 17, 1991
Fee: \$125.02

THE BELLEVILLE TIMES
January 17, 1991
Fee: \$125.02

THE BELLEVILLE TIMES
January 17, 1991
Fee: \$125.02

THE BELLEVILLE TIMES
January 17, 1991
Fee: \$125.02

THE BELLEVILLE TIMES
January 17, 1991
Fee: \$125.02

THE BELLEVILLE TIMES
January 17, 1991
Fee: \$125.02

THE BELLEVILLE TIMES
January 17, 1991
Fee: \$125.02

THE BELLEVILLE TIMES
January 17, 1991
Fee: \$125.02

THE BELLEVILLE TIMES
January 17, 1991
Fee: \$125.02

THE BELLEVILLE TIMES
January 17, 1991
Fee: \$125.02

THE BELLEVILLE TIMES
January 17, 1991
Fee: \$125.02

THE BELLEVILLE TIMES
January 17, 1991
Fee: \$125.02

THE BELLEVILLE TIMES
January 17, 1991
Fee: \$125.02

THE BELLEVILLE TIMES
January 17, 1991
Fee: \$125.02

THE BELLEVILLE TIMES
January 17, 1991
Fee: \$125.02

THE BELLEVILLE TIMES
January 17, 1991
Fee: \$125.02

THE BELLEVILLE TIMES
January 17, 1991
Fee: \$125.02

THE BELLEVILLE TIMES
January 17, 1991
Fee: \$125.02

THE BELLEVILLE TIMES
January 17, 1991
Fee: \$125.02

THE BELLEVILLE TIMES
January 17, 1991
Fee: \$125.02

THE BELLEVILLE TIMES
January 17, 1991
Fee: \$125.02

THE BELLEVILLE TIMES
January 17, 1991
Fee: \$125.02

THE BELLEVILLE TIMES
January 17, 1991
Fee: \$125.02

THE BELLEVILLE TIMES
January 17, 1991
Fee: \$125.02

THE BELLEVILLE TIMES
January 17, 1991
Fee: \$125.02

THE BELLEVILLE TIMES
January 17, 1991
Fee: \$125.02

THE BELLEVILLE TIMES
January 17, 1991
Fee: \$125.02

THE BELLEVILLE TIMES
January 17, 1991
Fee: \$125.02

THE BELLEVILLE TIMES
January 17, 1991
Fee: \$125.02

THE BELLEVILLE TIMES
January 17, 1991
Fee: \$125.02

THE BELLEVILLE TIMES
January 17, 1991
Fee: \$125.02

THE BELLEVILLE TIMES
January 17, 1991
Fee: \$125.02

THE BELLEVILLE TIMES
January 17, 1991
Fee: \$125.02

THE BELLEVILLE TIMES
January 17, 1991
Fee: \$125.02

THE BELLEVILLE TIMES
January 17, 1991
Fee: \$125.02

THE BELLEVILLE TIMES
January 17, 1991
Fee: \$125.02

THE BELLEVILLE TIMES
January 17, 1991
Fee: \$125.02

THE BELLEVILLE TIMES
January 17, 1991
Fee: \$125.02

THE BELLEVILLE TIMES
January 17, 1991
Fee: \$125.02

THE BELLEVILLE TIMES
January 17, 1991
Fee: \$125.02

THE BELLEVILLE TIMES
January 17, 1991
Fee: \$125.02

THE BELLEVILLE TIMES
January 17, 1991
Fee: \$125.02

THE BELLEVILLE TIMES
January 17, 1991
Fee: \$125.02

THE BELLEVILLE TIMES
January 17, 1991
Fee: \$125.02

THE BELLEVILLE TIMES
January 17, 1991
Fee: \$125.02

THE BELLEVILLE TIMES
January 17, 1991
Fee: \$125.02

THE BELLEVILLE TIMES
January 17, 1991
Fee: \$125.02

THE BELLEVILLE TIMES
January 17, 1991
Fee: \$125.02

THE BELLEVILLE TIMES
January 17, 1991
Fee: \$125.02

THE BELLEVILLE TIMES
January 17, 1991
Fee: \$125.02

THE BELLEVILLE TIMES
January 17, 1991
Fee: \$125.02

THE BELLEVILLE TIMES
January 17, 1991
Fee: \$125.02

THE BELLEVILLE TIMES
January 17, 1991
Fee: \$125.02

THE BELLEVILLE TIMES
January 17, 1991
Fee: \$125.02

THE BELLEVILLE TIMES
January 17, 1991
Fee: \$125.02

THE BELLEVILLE TIMES
January 17, 1991
Fee: \$125.02

THE BELLEVILLE TIMES
January 17, 1991
Fee: \$125.02

THE BELLEVILLE TIMES
January 17, 1991
Fee: \$125.02

THE BELLEVILLE TIMES
January 17, 1991
Fee: \$125.02

THE BELLEVILLE TIMES
January 17, 1991
Fee: \$125.02

THE BELLEVILLE TIMES
January 17, 1991
Fee: \$125.02

THE BELLEVILLE TIMES
January 17, 1991
Fee: \$125.02

THE BELLEVILLE TIMES
January 17, 1991
Fee: \$125.02

THE BELLEVILLE TIMES
January 17, 1991
Fee: \$125.02

THE BELLEVILLE TIMES
January 17, 1991
Fee: \$125.02

THE BELLEVILLE TIMES
January 17, 1991
Fee: \$125.02

THE BELLEVILLE TIMES
January 17, 1991
Fee: \$125.02

THE BELLEVILLE TIMES
January 17, 1991
Fee: \$125.02



THE CLASSIFIEDS

Call:
667-3000

OBC-TV

Dining room Jacobean oak, 10 pc good to excellent. Asking \$1,400. Also electric water heater 40 gal. Asking \$150. 478-4193

AUTO SALES

1985 Camaro, auto, 6 cyl, red, loaded, \$2K, nice. Top, \$4,995. 266-6830 days/676-6767 eves

1989 Cadillac DeVille, wh. ext, grey velvet int, 19K, mls. Exc. cond. 759-2392

84 Dodge Dakota Turbo PS/PB, air, beat, def, 100,000 good cond. \$350 or B.O. Call Trish or Jess at 661-4039

A GUARANTEED AUTO LOAN! No One Refused! No Credit, Bad Credit OK! In fact, call 1-900-420-4242

SEIZED CARS, trucks, boats, 4 wheelers, motorcycles, by FBI, IRS, DEA. Available your area now. Call 1-800-682-7555 ext C-3482

AUTO WRECKERS

JUNK CARS WANTED *Free Tow-Away *Same Day Pick-Up (In Most Cases) S.O.S. TOWING, INC. 429-8471 Bloomfield 481-2610 Newark

PARTS ACCESSORIES SERVICES

ATTENTION! AUTO PARTS

WILL PAY CASH FOR ANY JUNK CAR IN ANY CONDITION Highest prices paid for late models. USED CARS & TRUCKS 991-4246 or 991-0081 54 Stover Ave., Kearny

FREE TOWING & ROAD TESTS

Krups* AUTOMATIC TRANSMISSIONS INC. STANDARD & AUTOMATIC 4-WHEEL DRIVE TRUCKS & CARS FREE ESTIMATES 998-9666 (Across from North Arlington Diner) 20 RIVER ROAD, NORTH ARLINGTON

667-3000 Mon. thru Fri. 9:00 AM to 5:00 PM

Deadline - Tues. 12 Noon

CLASSIFIED INDEX

CHECK YOUR AD THE FIRST DAY OF PUBLICATION.

The Nutley Sun, Belleville Times & Bloomfield Life are responsible for MAJOR errors in the first day's insertion.

CREDITS: Credits and adjustments are to be made only for errors which significantly affect the effectiveness of the ad, such as a wrong telephone number or price. Credits will not be issued for typographical errors or misspelled words. The newspapers can assume responsibility only for MAJOR errors in the first day's publication.

Classified line ads appear in all three newspapers: NUTLEY SUN, BELLEVILLE TIMES, BLOOMFIELD LIFE

and will appear once, free of charge, on OBC-TV Channel 36 during "The Community Bulletin Board" time frame.

WHEELS

ANNOUNCEMENTS

CHILD CARE

DIAL-A-SERVICE

REAL ESTATE

RENTALS

PETS & LIVESTOCK

EMPLOYMENT

FINANCIAL

INSTRUCTION

MERCHANDISE

LEGAL

SECRETARY

WAREHOUSE HELP

WANTED

ARTICLES WANTED

LOST & FOUND

RECYCLING

GENERAL OPPORTS.

PERSONAL OPPORTS.

GENERAL OPPORTS.

TELLERS

MEDICAL

BUSINESS OPPORTS.

ARTICLES WANTED

LOANS BY MAIL

TAX PREPARATION

ARTICLES FOR SALE

WANTED

CONDITIONERS

CASH

FINANCIAL

MEDICAL

SECRETARY

RECEPTIONIST

DAILY 8am-4pm. Busy medical office duties/telephone scheduling, 3rd party billing, regulating patient flow. Sal comm. w/exp. Bloomfield Imaging 743-6611

SECRETARY

RECEPTIONIST

DAILY 8am-4pm. Busy medical office duties/telephone scheduling, 3rd party billing, regulating patient flow. Sal comm. w/exp. Bloomfield Imaging 743-6611

SECRETARY

RECEPTIONIST

DAILY 8am-4pm. Busy medical office duties/telephone scheduling, 3rd party billing, regulating patient flow. Sal comm. w/exp. Bloomfield Imaging 743-6611

SECRETARY

RECEPTIONIST

DAILY 8am-4pm. Busy medical office duties/telephone scheduling, 3rd party billing, regulating patient flow. Sal comm. w/exp. Bloomfield Imaging 743-6611

SECRETARY

RECEPTIONIST

DAILY 8am-4pm. Busy medical office duties/telephone scheduling, 3rd party billing, regulating patient flow. Sal comm. w/exp. Bloomfield Imaging 743-6611

SECRETARY

RECEPTIONIST

DAILY 8am-4pm. Busy medical office duties/telephone scheduling, 3rd party billing, regulating patient flow. Sal comm. w/exp. Bloomfield Imaging 743-6611

SECRETARY

RECEPTIONIST

DAILY 8am-4pm. Busy medical office duties/telephone scheduling, 3rd party billing, regulating patient flow. Sal comm. w/exp. Bloomfield Imaging 743-6611

SECRETARY

RECEPTIONIST

DAILY 8am-4pm. Busy medical office duties/telephone scheduling, 3rd party billing, regulating patient flow. Sal comm. w/exp. Bloomfield Imaging 743-6611

SECRETARY

RECEPTIONIST

DAILY 8am-4pm. Busy medical office duties/telephone scheduling, 3rd party billing, regulating patient flow. Sal comm. w/exp. Bloomfield Imaging 743-6611

SECRETARY

RECEPTIONIST

DAILY 8am-4pm. Busy medical office duties/telephone scheduling, 3rd party billing, regulating patient flow. Sal comm. w/exp. Bloomfield Imaging 743-6611

SECRETARY

RECEPTIONIST

DAILY 8am-4pm. Busy medical office duties/telephone scheduling, 3rd party billing, regulating patient flow. Sal comm. w/exp. Bloomfield Imaging 743-6611

SECRETARY

RECEPTIONIST

DAILY 8am-4pm. Busy medical office duties/telephone scheduling, 3rd party billing, regulating patient flow. Sal comm. w/exp. Bloomfield Imaging 743-6611

SECRETARY

RECEPTIONIST

DAILY 8am-4pm. Busy medical office duties/telephone scheduling, 3rd party billing, regulating patient flow. Sal comm. w/exp. Bloomfield Imaging 743-6611

SECRETARY

RECEPTIONIST

DAILY 8am-4pm. Busy medical office duties/telephone scheduling, 3rd party billing, regulating patient flow. Sal comm. w/exp. Bloomfield Imaging 743-6611

SECRETARY

RECEPTIONIST

DAILY 8am-4pm. Busy medical office duties/telephone scheduling, 3rd party billing, regulating patient flow. Sal comm. w/exp. Bloomfield Imaging 743-6611

SECRETARY

RECEPTIONIST

DAILY 8am-4pm. Busy medical office duties/telephone scheduling, 3rd party billing, regulating patient flow. Sal comm. w/exp. Bloomfield Imaging 743-6611

SECRETARY

RECEPTIONIST

DAILY 8am-4pm. Busy medical office duties/telephone scheduling, 3rd party billing, regulating patient flow. Sal comm. w/exp. Bloomfield Imaging 743-6611

SECRETARY

RECEPTIONIST

DAILY 8am-4pm. Busy medical office duties/telephone scheduling, 3rd party billing, regulating patient flow. Sal comm. w/exp. Bloomfield Imaging 743-6611

SECRETARY

RECEPTIONIST

DAILY 8am-4pm. Busy medical office duties/telephone scheduling, 3rd party billing, regulating patient flow. Sal comm. w/exp. Bloomfield Imaging 743-6611

SECRETARY

RECEPTIONIST

DAILY 8am-4pm. Busy medical office duties/telephone scheduling, 3rd party billing, regulating patient flow. Sal comm. w/exp. Bloomfield Imaging 743-6611

SECRETARY

RECEPTIONIST

DAILY 8am-4pm. Busy medical office duties/telephone scheduling, 3rd party billing, regulating patient flow. Sal comm. w/exp. Bloomfield Imaging 743-6611

SECRETARY

RECEPTIONIST

DAILY 8am-4pm. Busy medical office duties/telephone scheduling, 3rd party billing, regulating patient flow. Sal comm. w/exp. Bloomfield Imaging 743-6611

SECRETARY

RECEPTIONIST

DAILY 8am-4pm. Busy medical office duties/telephone scheduling, 3rd party billing, regulating patient flow. Sal comm. w/exp. Bloomfield Imaging 743-6611

SECRETARY

RECEPTIONIST

DAILY 8am-4pm. Busy medical office duties/telephone scheduling, 3rd party billing, regulating patient flow. Sal comm. w/exp. Bloomfield Imaging 743-6611

SECRETARY

RECEPTIONIST

DAILY 8am-4pm. Busy medical office duties/telephone scheduling, 3rd party billing, regulating patient flow. Sal comm. w/exp. Bloomfield Imaging 743-6611

SECRETARY

RECEPTIONIST

DAILY 8am-4pm. Busy medical office duties/telephone scheduling, 3rd party billing, regulating patient flow. Sal comm. w/exp. Bloomfield Imaging 743-6611

SECRETARY

RECEPTIONIST

DAILY 8am-4pm. Busy medical office duties/telephone scheduling, 3rd party billing, regulating patient flow. Sal comm. w/exp. Bloomfield Imaging 743-6611

SECRETARY

RECEPTIONIST

DAILY 8am-4pm. Busy medical office duties/telephone scheduling, 3rd party billing, regulating patient flow. Sal comm. w/exp. Bloomfield Imaging 743-6611

SECRETARY

RECEPTIONIST

DAILY 8am-4pm. Busy medical office duties/telephone scheduling, 3rd party billing, regulating patient flow. Sal comm. w/exp. Bloomfield Imaging 743-6611

SECRETARY

RECEPTIONIST

DAILY 8am-4pm. Busy medical office duties/telephone scheduling, 3rd party billing, regulating patient flow. Sal comm. w/exp. Bloomfield Imaging 743-6611

SECRETARY

RECEPTIONIST

DAILY 8am-4pm. Busy medical office duties/telephone scheduling, 3rd party billing, regulating patient flow. Sal comm. w/exp. Bloomfield Imaging 743-6611

SECRETARY

RECEPTIONIST

DAILY 8am-4pm. Busy medical office duties/telephone scheduling, 3rd party billing, regulating patient flow. Sal comm. w/exp. Bloomfield Imaging 743-6611

SECRETARY

RECEPTIONIST

DAILY 8am-4pm. Busy medical office duties/telephone scheduling, 3rd party billing, regulating patient flow. Sal comm. w/exp. Bloomfield Imaging 743-6611

SECRETARY

RECEPTIONIST

DAILY 8am-4pm. Busy medical office duties/telephone scheduling, 3rd party billing, regulating patient flow. Sal comm. w/exp. Bloomfield Imaging 743-6611

SECRETARY

RECEPTIONIST

DAILY 8am-4pm. Busy medical office duties/telephone scheduling, 3rd party billing, regulating patient flow. Sal comm. w/exp. Bloomfield Imaging 743-6611

SECRETARY

RECEPTIONIST

DAILY 8am-4pm. Busy medical office duties/telephone scheduling, 3rd party billing, regulating patient flow. Sal comm. w/exp. Bloomfield Imaging 743-6611

SECRETARY

RECEPTIONIST

DAILY 8am-4pm. Busy medical office duties/telephone scheduling, 3rd party billing, regulating patient flow. Sal comm. w/exp. Bloomfield Imaging 743-6611

SECRETARY

RECEPTIONIST

DAILY 8am-4pm. Busy medical office duties/telephone scheduling, 3rd party billing, regulating patient flow. Sal comm. w/exp. Bloomfield Imaging 743-6611

SECRETARY

RECEPTIONIST

DAILY 8am-4pm. Busy medical office duties/telephone scheduling, 3rd party billing, regulating patient flow. Sal comm. w/exp. Bloomfield Imaging 743-6611

SECRETARY

RECEPTIONIST

DAILY 8am-4pm. Busy medical office duties/telephone scheduling, 3rd party billing, regulating patient flow. Sal comm. w/exp. Bloomfield Imaging 743-6611

SECRETARY

RECEPTIONIST

DAILY 8am-4pm. Busy medical office duties/telephone scheduling, 3rd party billing, regulating patient flow. Sal comm. w/exp. Bloomfield Imaging 743-6611

SECRETARY

RECEPTIONIST

DAILY 8am-4pm. Busy medical office duties/telephone scheduling, 3rd party billing, regulating patient flow. Sal comm. w/exp. Bloomfield Imaging 743-6611

SECRETARY

RECEPTIONIST

DAILY 8am-4pm. Busy medical office duties/telephone scheduling, 3rd party billing, regulating patient flow. Sal comm. w/exp. Bloomfield Imaging 743-6611

SECRETARY

RECEPTIONIST

DAILY 8am-4pm. Busy medical office duties/telephone scheduling, 3rd party billing, regulating patient flow. Sal comm. w/exp. Bloomfield Imaging 743-6611

SECRETARY

RECEPTIONIST

DAILY 8am-4pm. Busy medical office duties/telephone scheduling, 3rd party billing, regulating patient flow. Sal comm. w/exp. Bloomfield Imaging 743-6611

SECRETARY

RECEPTIONIST

DAILY 8am-4pm. Busy medical office duties/telephone scheduling, 3rd party billing, regulating patient flow. Sal comm. w/exp. Bloomfield Imaging 743-6611

SECRETARY

RECEPTIONIST

DAILY 8am-4pm. Busy medical office duties/telephone scheduling, 3rd party billing, regulating patient flow. Sal comm. w/exp. Bloomfield Imaging 743-6611

SECRETARY

RECEPTIONIST

DAILY 8am-4pm. Busy medical office duties/telephone scheduling, 3rd party billing, regulating patient flow. Sal comm. w/exp. Bloomfield Imaging 743-6611

SECRETARY

RECEPTIONIST

DAILY 8am-4pm. Busy medical office duties/telephone scheduling, 3rd party billing, regulating patient flow. Sal comm. w/exp. Bloomfield Imaging 743-6611

SECRETARY

RECEPTIONIST

DAILY 8am-4pm. Busy medical office duties/telephone scheduling, 3rd party billing, regulating patient flow. Sal comm. w/exp. Bloomfield Imaging 743-6611

SECRETARY

RECEPTIONIST

DAILY 8am-4pm. Busy medical office duties/telephone scheduling, 3rd party billing, regulating patient flow. Sal comm. w/exp. Bloomfield Imaging 743-6611

SECRETARY

RECEPTIONIST

DAILY 8am-4pm. Busy medical office duties/telephone scheduling, 3rd party billing, regulating patient flow. Sal comm. w/exp. Bloomfield Imaging 743-6611

SECRETARY

RECEPTIONIST

DAILY 8am-4pm. Busy medical office duties/telephone scheduling, 3rd party billing, regulating patient flow. Sal comm. w/exp. Bloomfield Imaging 743-6611

SECRETARY

RECEPTIONIST

DAILY 8am-4pm. Busy medical office duties/telephone scheduling, 3rd party billing, regulating patient flow. Sal comm. w/exp. Bloomfield Imaging 743-6611

SECRETARY

RECEPTIONIST

DAILY 8am-4pm. Busy medical office duties/telephone scheduling, 3rd party billing, regulating patient flow. Sal comm. w/exp. Bloomfield Imaging 743-6611

SECRETARY

RECEPTIONIST

DAILY 8am-4pm. Busy medical office duties/telephone scheduling, 3rd party billing, regulating patient flow. Sal comm. w/exp. Bloomfield Imaging 743-6611

SECRETARY

RECEPTIONIST

DAILY 8am-4pm. Busy medical office duties/telephone scheduling, 3rd party billing, regulating patient flow. Sal comm. w/exp. Bloomfield Imaging 743-6611

SECRETARY

HOUSES FOR SALE
BELLEVILLE—end new duplex, 3 BR, 3 bath, 1 1/2 car, kitchen, living area, L/R, Summer room, C/A, sep wll. \$135,000 ea. or best offer. Call 678-1972
BELLEVILLE 4 bed, brick, 2000 sq. ft. 12 furnaces. Dead-End St. All new. \$240,000. 759-2526
BELLEVILLE 3 BR, Call. Paved school area. 1050 ft. lot driveway. Move in cond. Taxes \$2,150. Priced to sell \$114,900.
NUZZO Real Estate Agency 664-1070
BELLEVILLE ALL OFFERS CONSIDERED! This 6 1/2 rm Col. is a great buy. Mod kit, with breakfast room, lg DR, apt. in LR, 3 BDRMs, fenced in yard. Asking \$149,900. Call to see: ORECHIO AGENCY 667-7733 Eve Marie 667-8183
BELLEVILLE ALL OFFERS CONSIDERED! This 6 1/2 rm Col. is a great buy. Mod kit, with breakfast room, lg DR, apt. in LR, 3 BDRMs, fenced in yard. Asking \$149,900. Call to see: ORECHIO AGENCY 667-7733 Eve Marie 667-8183
BLOOMFIELD & VIC Mod studio apt w/ kitchen, \$350-625
BELLEVILLE & VIC Mod studio apt w/ kitchen, \$350-625
BELLEVILLE 3 1/2 rm mod apt gdn apt. Avail 2/1. \$625 inc H. Bloomfield 734-2300
BELLEVILLE 3 1/2 rm mod apt gdn apt. Avail 2/1. \$625 inc H. Bloomfield 734-2300
BELLEVILLE 6 mod rms, 3 BR, new kit, W/c cap, \$750 + 4 nice rms w/2 BDRs. Avail now. \$650 inc H. 5 rm mod rms, w/2 BR, 1st flr. \$880 inc H. Real Estate
MARZULLI REAL ESTATE 743-2300

HOUSES FOR SALE
BELLEVILLE FREE Brochure on waterfront homes in Orleans County. Long Beach Island to Little Egg Harbor. Starting in the \$90's. Call Zachariah Realty 914-606-4333-1142
BELLEVILLE 4 BR Colonial, w/many extras. Avail Now \$1200. Real Estate
MARZULLI REAL ESTATE 743-2300
BELLEVILLE Mansion! Large front Villa. Large home in prestigious East Point has direct by access. Contemporary with all new carpet. Priced to sell. \$139,900. Call to see: L.B.I. A.C. and G.S.P. Call Realtor Van DYK GROUP 1-800-735-1901
BELLEVILLE OPEN HOUSE SUN, 12-4pm TOP OF NUTLEY PARK English lush all brick newly refurbished & redecorated. Cathedral ceiling, dramatic formal rooms, plus spectacular deep yard. Call 746-1515 \$314,000 (049-2435) Dir-GSP ext 151, E on Weichung, R on E Passaic, L on Centre St. R on Passaic, R on Rutgers P11615.
BELLEVILLE GRACIOUS COLONIAL In Historic area, lg level lot Well kept home w/6 BR, 4 1/2 bth, 7 1/2 lg studio. Must be seen! Needs reduced. \$359,000. Reduced much w/6 rms, 1 1/2 bth, 1 lg rtr, rtr, \$169,900. Take a look! Spt. Ord. area, Cape w/6 mod kit, 2 BR, rtr, porch, attached car. A-1 Cond. \$179,900. Cape w/DR, fam rm, 3 BR, 2 bth, attached car, 1/2 gr. Grin. area. Auction to Sell!
BELLEVILLE 2 FAMILY Silver Lake area 56, W/w bth, completely new. fenced yd. Conv. to shops & city subways. \$149,900. REALTOR: RECORDS REALTY 31 High St, Nutley 667-5500

HOUSES FOR SALE
BELLEVILLE REPOSESSED VA & HUD HOMES available from government from \$1 without credit check. You repair. Also R. L. without properties. Call 1-800-682-7382 ext. 31-9999 for type list your area.
BELLEVILLE WEST COLDWELL OPEN HOUSE 39 Delaware Rd. (Off Harrison Ave.) BY OWNER! Magnificent 4 Bdr Bl-level in highly desirable family neighborhood. A/C, tile, elem, c/s & H.S. Situated on park-like grounds (100x181). This house has 1 mod. EIK, 4 lgr. bdrms, 2 1/2 bth, paneled fam. rm, custom W/W cap, central air, triple, elevated deck, patio. Move in condition. A DREAM COME TRUE! Offered \$279,500. Call 228-1248
BELLEVILLE NUTLEY 3rd flr, 2 rooms furnished. A/C, tile & prkg. No fee. \$506. per mo. Single 667-7070
APARTMENTS UNFURNISHED
BELLEVILLE 3 1/2 & 4 1/2 lg ultra mod rms with w/c carpeting. H & W incl. A/C, tile, all util. \$75 wk. Bloomfield (studio room) 3rd fl, all util. inc. \$75 wk. Bloomfield 4 1/2 rm, 2nd fl. H/W + gas incl. Children OK \$600
NUTLEY 3 1/2 rm, 2nd fl. H/W + gas incl. Children OK \$600
METRO AGENCY Real Estate 751-3400
BELLEVILLE 2nd fl. 3 1/2 rm. No pets. Avail 2/1. 429-0900 days 235-1663 anls
BELLEVILLE 5 rms, 2nd flr, 2 fms, new kit W/W cap, prkg. \$700. plus utility. 751-0890
Blind 1 bdr. parking, near trans. no pets. \$550 + util. 748-1023 leave message.
Blind/Belle Border Sunny 1 bdr. prkg. apt. in vny area. Avail. Immed. \$500 inc. H/W. 1 1/2 msn. No pets. Call 857-5827 after 4. No fee.

APARTMENTS UNFURNISHED
BELLEVILLE Bloomfield, spacious 2 BR, 2 BDR, new Frig & stove, new wall to wall carpet. No pets. \$700 plus utility. Avail. 748-7999
BLOOMFIELD 3 1/2 lg mod rms, garden apt. H/W, parking facilities on premises & parking. Call 743-8434 or 748-0302
BLOOMFIELD FREE 1 MO RENT 2 1/2, 3 & 4 rm. apt. NY bus at door. Call Susan 429-8444
BLOOMFIELD 4 rm, 1st flr, \$675, h/w & gas inc. St. Val's area. No pets. 429-9498 By Owner 421-215 or 3/1
BLOOMFIELD 2 1/2 fms. \$450 all util. 3 rms, \$450 h/w inc. 3 rms, \$500 h/w inc. 5 rms, \$525 + Effc \$515 h/w inc. 1 BR gdn \$375 h/w inc. 3 BR \$600 + 3 1/2 gdn \$625 h/w inc. 3 rms \$650 + 5 rms \$875 h/w inc. Montell Agency 759-6900
NUTLEY 5 mod rms \$975 + Bloomfield 2 BR home \$925 + BELLEVILLE 1 BR, \$450, h/w inc. 3 1/2 rms \$480, + 3 rms \$530, + Effc \$515 h/w inc. 1 BR gdn \$375 h/w inc. 3 BR \$600 + 3 1/2 gdn \$625 h/w inc. 3 rms \$650 + 5 rms \$875 h/w inc. Montell Agency 759-6900
NUTLEY 5 mod rms \$975 + Bloomfield 2 BR home \$925 + BELLEVILLE 1 BR, \$450, h/w inc. 3 1/2 rms \$480, + 3 rms \$530, + Effc \$515 h/w inc. 1 BR gdn \$375 h/w inc. 3 BR \$600 + 3 1/2 gdn \$625 h/w inc. 3 rms \$650 + 5 rms \$875 h/w inc. Montell Agency 759-6900
NUTLEY 5 mod rms \$975 + Bloomfield 2 BR home \$925 + BELLEVILLE 1 BR, \$450, h/w inc. 3 1/2 rms \$480, + 3 rms \$530, + Effc \$515 h/w inc. 1 BR gdn \$375 h/w inc. 3 BR \$600 + 3 1/2 gdn \$625 h/w inc. 3 rms \$650 + 5 rms \$875 h/w inc. Montell Agency 759-6900
NUTLEY 5 mod rms \$975 + Bloomfield 2 BR home \$925 + BELLEVILLE 1 BR, \$450, h/w inc. 3 1/2 rms \$480, + 3 rms \$530, + Effc \$515 h/w inc. 1 BR gdn \$375 h/w inc. 3 BR \$600 + 3 1/2 gdn \$625 h/w inc. 3 rms \$650 + 5 rms \$875 h/w inc. Montell Agency 759-6900
NUTLEY 5 mod rms \$975 + Bloomfield 2 BR home \$925 + BELLEVILLE 1 BR, \$450, h/w inc. 3 1/2 rms \$480, + 3 rms \$530, + Effc \$515 h/w inc. 1 BR gdn \$375 h/w inc. 3 BR \$600 + 3 1/2 gdn \$625 h/w inc. 3 rms \$650 + 5 rms \$875 h/w inc. Montell Agency 759-6900
NUTLEY 5 mod rms \$975 + Bloomfield 2 BR home \$925 + BELLEVILLE 1 BR, \$450, h/w inc. 3 1/2 rms \$480, + 3 rms \$530, + Effc \$515 h/w inc. 1 BR gdn \$375 h/w inc. 3 BR \$600 + 3 1/2 gdn \$625 h/w inc. 3 rms \$650 + 5 rms \$875 h/w inc. Montell Agency 759-6900
NUTLEY 5 mod rms \$975 + Bloomfield 2 BR home \$925 + BELLEVILLE 1 BR, \$450, h/w inc. 3 1/2 rms \$480, + 3 rms \$530, + Effc \$515 h/w inc. 1 BR gdn \$375 h/w inc. 3 BR \$600 + 3 1/2 gdn \$625 h/w inc. 3 rms \$650 + 5 rms \$875 h/w inc. Montell Agency 759-6900
NUTLEY 5 mod rms \$975 + Bloomfield 2 BR home \$925 + BELLEVILLE 1 BR, \$450, h/w inc. 3 1/2 rms \$480, + 3 rms \$530, + Effc \$515 h/w inc. 1 BR gdn \$375 h/w inc. 3 BR \$600 + 3 1/2 gdn \$625 h/w inc. 3 rms \$650 + 5 rms \$875 h/w inc. Montell Agency 759-6900
NUTLEY 5 mod rms \$975 + Bloomfield 2 BR home \$925 + BELLEVILLE 1 BR, \$450, h/w inc. 3 1/2 rms \$480, + 3 rms \$530, + Effc \$515 h/w inc. 1 BR gdn \$375 h/w inc. 3 BR \$600 + 3 1/2 gdn \$625 h/w inc. 3 rms \$650 + 5 rms \$875 h/w inc. Montell Agency 759-6900
NUTLEY 5 mod rms \$975 + Bloomfield 2 BR home \$925 + BELLEVILLE 1 BR, \$450, h/w inc. 3 1/2 rms \$480, + 3 rms \$530, + Effc \$515 h/w inc. 1 BR gdn \$375 h/w inc. 3 BR \$600 + 3 1/2 gdn \$625 h/w inc. 3 rms \$650 + 5 rms \$875 h/w inc. Montell Agency 759-6900
NUTLEY 5 mod rms \$975 + Bloomfield 2 BR home \$925 + BELLEVILLE 1 BR, \$450, h/w inc. 3 1/2 rms \$480, + 3 rms \$530, + Effc \$515 h/w inc. 1 BR gdn \$375 h/w inc. 3 BR \$600 + 3 1/2 gdn \$625 h/w inc. 3 rms \$650 + 5 rms \$875 h/w inc. Montell Agency 759-6900
NUTLEY 5 mod rms \$975 + Bloomfield 2 BR home \$925 + BELLEVILLE 1 BR, \$450, h/w inc. 3 1/2 rms \$480, + 3 rms \$530, + Effc \$515 h/w inc. 1 BR gdn \$375 h/w inc. 3 BR \$600 + 3 1/2 gdn \$625 h/w inc. 3 rms \$650 + 5 rms \$875 h/w inc. Montell Agency 759-6900
NUTLEY 5 mod rms \$975 + Bloomfield 2 BR home \$925 + BELLEVILLE 1 BR, \$450, h/w inc. 3 1/2 rms \$480, + 3 rms \$530, + Effc \$515 h/w inc. 1 BR gdn \$375 h/w inc. 3 BR \$600 + 3 1/2 gdn \$625 h/w inc. 3 rms \$650 + 5 rms \$875 h/w inc. Montell Agency 759-6900
NUTLEY 5 mod rms \$975 + Bloomfield 2 BR home \$925 + BELLEVILLE 1 BR, \$450, h/w inc. 3 1/2 rms \$480, + 3 rms \$530, + Effc \$515 h/w inc. 1 BR gdn \$375 h/w inc. 3 BR \$600 + 3 1/2 gdn \$625 h/w inc. 3 rms \$650 + 5 rms \$875 h/w inc. Montell Agency 759-6900
NUTLEY 5 mod rms \$975 + Bloomfield 2 BR home \$925 + BELLEVILLE 1 BR, \$450, h/w inc. 3 1/2 rms \$480, + 3 rms \$530, + Effc \$515 h/w inc. 1 BR gdn \$375 h/w inc. 3 BR \$600 + 3 1/2 gdn \$625 h/w inc. 3 rms \$650 + 5 rms \$875 h/w inc. Montell Agency 759-6900
NUTLEY 5 mod rms \$975 + Bloomfield 2 BR home \$925 + BELLEVILLE 1 BR, \$450, h/w inc. 3 1/2 rms \$480, + 3 rms \$530, + Effc \$515 h/w inc. 1 BR gdn \$375 h/w inc. 3 BR \$600 + 3 1/2 gdn \$625 h/w inc. 3 rms \$650 + 5 rms \$875 h/w inc. Montell Agency 759-6900
NUTLEY 5 mod rms \$975 + Bloomfield 2 BR home \$925 + BELLEVILLE 1 BR, \$450, h/w inc. 3 1/2 rms \$480, + 3 rms \$530, + Effc \$515 h/w inc. 1 BR gdn \$375 h/w inc. 3 BR \$600 + 3 1/2 gdn \$625 h/w inc. 3 rms \$650 + 5 rms \$875 h/w inc. Montell Agency 759-6900
NUTLEY 5 mod rms \$975 + Bloomfield 2 BR home \$925 + BELLEVILLE 1 BR, \$450, h/w inc. 3 1/2 rms \$480, + 3 rms \$530, + Effc \$515 h/w inc. 1 BR gdn \$375 h/w inc. 3 BR \$600 + 3 1/2 gdn \$625 h/w inc. 3 rms \$650 + 5 rms \$875 h/w inc. Montell Agency 759-6900
NUTLEY 5 mod rms \$975 + Bloomfield 2 BR home \$925 + BELLEVILLE 1 BR, \$450, h/w inc. 3 1/2 rms \$480, + 3 rms \$530, + Effc \$515 h/w inc. 1 BR gdn \$375 h/w inc. 3 BR \$600 + 3 1/2 gdn \$625 h/w inc. 3 rms \$650 + 5 rms \$875 h/w inc. Montell Agency 759-6900
NUTLEY 5 mod rms \$975 + Bloomfield 2 BR home \$925 + BELLEVILLE 1 BR, \$450, h/w inc. 3 1/2 rms \$480, + 3 rms \$530, + Effc \$515 h/w inc. 1 BR gdn \$375 h/w inc. 3 BR \$600 + 3 1/2 gdn \$625 h/w inc. 3 rms \$650 + 5 rms \$875 h/w inc. Montell Agency 759-6900
NUTLEY 5 mod rms \$975 + Bloomfield 2 BR home \$925 + BELLEVILLE 1 BR, \$450, h/w inc. 3 1/2 rms \$480, + 3 rms \$530, + Effc \$515 h/w inc. 1 BR gdn \$375 h/w inc. 3 BR \$600 + 3 1/2 gdn \$625 h/w inc. 3 rms \$650 + 5 rms \$875 h/w inc. Montell Agency 759-6900
NUTLEY 5 mod rms \$975 + Bloomfield 2 BR home \$925 + BELLEVILLE 1 BR, \$450, h/w inc. 3 1/2 rms \$480, + 3 rms \$530, + Effc \$515 h/w inc. 1 BR gdn \$375 h/w inc. 3 BR \$600 + 3 1/2 gdn \$625 h/w inc. 3 rms \$650 + 5 rms \$875 h/w inc. Montell Agency 759-6900
NUTLEY 5 mod rms \$975 + Bloomfield 2 BR home \$925 + BELLEVILLE 1 BR, \$450, h/w inc. 3 1/2 rms \$480, + 3 rms \$530, + Effc \$515 h/w inc. 1 BR gdn \$375 h/w inc. 3 BR \$600 + 3 1/2 gdn \$625 h/w inc. 3 rms \$650 + 5 rms \$875 h/w inc. Montell Agency 759-6900
NUTLEY 5 mod rms \$975 + Bloomfield 2 BR home \$925 + BELLEVILLE 1 BR, \$450, h/w inc. 3 1/2 rms \$480, + 3 rms \$530, + Effc \$515 h/w inc. 1 BR gdn \$375 h/w inc. 3 BR \$600 + 3 1/2 gdn \$625 h/w inc. 3 rms \$650 + 5 rms \$875 h/w inc. Montell Agency 759-6900
NUTLEY 5 mod rms \$975 + Bloomfield 2 BR home \$925 + BELLEVILLE 1 BR, \$450, h/w inc. 3 1/2 rms \$480, + 3 rms \$530, + Effc \$515 h/w inc. 1 BR gdn \$375 h/w inc. 3 BR \$600 + 3 1/2 gdn \$625 h/w inc. 3 rms \$650 + 5 rms \$875 h/w inc. Montell Agency 759-6900
NUTLEY 5 mod rms \$975 + Bloomfield 2 BR home \$925 + BELLEVILLE 1 BR, \$450, h/w inc. 3 1/2 rms \$480, + 3 rms \$530, + Effc \$515 h/w inc. 1 BR gdn \$375 h/w inc. 3 BR \$600 + 3 1/2 gdn \$625 h/w inc. 3 rms \$650 + 5 rms \$875 h/w inc. Montell Agency 759-6900
NUTLEY 5 mod rms \$975 + Bloomfield 2 BR home \$925 + BELLEVILLE 1 BR, \$450, h/w inc. 3 1/2 rms \$480, + 3 rms \$530, + Effc \$515 h/w inc. 1 BR gdn \$375 h/w inc. 3 BR \$600 + 3 1/2 gdn \$625 h/w inc. 3 rms \$650 + 5 rms \$875 h/w inc. Montell Agency 759-6900
NUTLEY 5 mod rms \$975 + Bloomfield 2 BR home \$925 + BELLEVILLE 1 BR, \$450, h/w inc. 3 1/2 rms \$480, + 3 rms \$530, + Effc \$515 h/w inc. 1 BR gdn \$375 h/w inc. 3 BR \$600 + 3 1/2 gdn \$625 h/w inc. 3 rms \$650 + 5 rms \$875 h/w inc. Montell Agency 759-6900
NUTLEY 5 mod rms \$975 + Bloomfield 2 BR home \$925 + BELLEVILLE 1 BR, \$450, h/w inc. 3 1/2 rms \$480, + 3 rms \$530, + Effc \$515 h/w inc. 1 BR gdn \$375 h/w inc. 3 BR \$600 + 3 1/2 gdn \$625 h/w inc. 3 rms \$650 + 5 rms \$875 h/w inc. Montell Agency 759-6900
NUTLEY 5 mod rms \$975 + Bloomfield 2 BR home \$925 + BELLEVILLE 1 BR, \$450, h/w inc. 3 1/2 rms \$480, + 3 rms \$530, + Effc \$515 h/w inc. 1 BR gdn \$375 h/w inc. 3 BR \$600 + 3 1/2 gdn \$625 h/w inc. 3 rms \$650 + 5 rms \$875 h/w inc. Montell Agency 759-6900
NUTLEY 5 mod rms \$975 + Bloomfield 2 BR home \$925 + BELLEVILLE 1 BR, \$450, h/w inc. 3 1/2 rms \$480, + 3 rms \$530, + Effc \$515 h/w inc. 1 BR gdn \$375 h/w inc. 3 BR \$600 + 3 1/2 gdn \$625 h/w inc. 3 rms \$650 + 5 rms \$875 h/w inc. Montell Agency 759-6900
NUTLEY 5 mod rms \$975 + Bloomfield 2 BR home \$925 + BELLEVILLE 1 BR, \$450, h/w inc. 3 1/2 rms \$480, + 3 rms \$530, + Effc \$515 h/w inc. 1 BR gdn \$375 h/w inc. 3 BR \$600 + 3 1/2 gdn \$625 h/w inc. 3 rms \$650 + 5 rms \$875 h/w inc. Montell Agency 759-6900
NUTLEY 5 mod rms \$975 + Bloomfield 2 BR home \$925 + BELLEVILLE 1 BR, \$450, h/w inc. 3 1/2 rms \$480, + 3 rms \$530, + Effc \$515 h/w inc. 1 BR gdn \$375 h/w inc. 3 BR \$600 + 3 1/2 gdn \$625 h/w inc. 3 rms \$650 + 5 rms \$875 h/w inc. Montell Agency 759-6900
NUTLEY 5 mod rms \$975 + Bloomfield 2 BR home \$925 + BELLEVILLE 1 BR, \$450, h/w inc. 3 1/2 rms \$480, + 3 rms \$530, + Effc \$515 h/w inc. 1 BR gdn \$375 h/w inc. 3 BR \$600 + 3 1/2 gdn \$625 h/w inc. 3 rms \$650 + 5 rms \$875 h/w inc. Montell Agency 759-6900
NUTLEY 5 mod rms \$975 + Bloomfield 2 BR home \$925 + BELLEVILLE 1 BR, \$450, h/w inc. 3 1/2 rms \$480, + 3 rms \$530, + Effc \$515 h/w inc. 1 BR gdn \$375 h/w inc. 3 BR \$600 + 3 1/2 gdn \$625 h/w inc. 3 rms \$650 + 5 rms \$875 h/w inc. Montell Agency 759-6900
NUTLEY 5 mod rms \$975 + Bloomfield 2 BR home \$925 + BELLEVILLE 1 BR, \$450, h/w inc. 3 1/2 rms \$480, + 3 rms \$530, + Effc \$515 h/w inc. 1 BR gdn \$375 h/w inc. 3 BR \$600 + 3 1/2 gdn \$625 h/w inc. 3 rms \$650 + 5 rms \$875 h/w inc. Montell Agency 759-6900
NUTLEY 5 mod rms \$975 + Bloomfield 2 BR home \$925 + BELLEVILLE 1 BR, \$450, h/w inc. 3 1/2 rms \$480, + 3 rms \$530, + Effc \$515 h/w inc. 1 BR gdn \$375 h/w inc. 3 BR \$600 + 3 1/2 gdn \$625 h/w inc. 3 rms \$650 + 5 rms \$875 h/w inc. Montell Agency 759-6900
NUTLEY 5 mod rms \$975 + Bloomfield 2 BR home \$925 + BELLEVILLE 1 BR, \$450, h/w inc. 3 1/2 rms \$480, + 3 rms \$530, + Effc \$515 h/w inc. 1 BR gdn \$375 h/w inc. 3 BR \$600 + 3 1/2 gdn \$625 h/w inc. 3 rms \$650 + 5 rms \$875 h/w inc. Montell Agency 759-6900
NUTLEY 5 mod rms \$975 + Bloomfield 2 BR home \$925 + BELLEVILLE 1 BR, \$450, h/w inc. 3 1/2 rms \$480, + 3 rms \$530, + Effc \$515 h/w inc. 1 BR gdn \$375 h/w inc. 3 BR \$600 + 3 1/2 gdn \$625 h/w inc. 3 rms \$650 + 5 rms \$875 h/w inc. Montell Agency 759-6900
NUTLEY 5 mod rms \$975 + Bloomfield 2 BR home \$925 + BELLEVILLE 1 BR, \$450, h/w inc. 3 1/2 rms \$480, + 3 rms \$530, + Effc \$515 h/w inc. 1 BR gdn \$375 h/w inc. 3 BR \$600 + 3 1/2 gdn \$625 h/w inc. 3 rms \$650 + 5 rms \$875 h/w inc. Montell Agency 759-6900
NUTLEY 5 mod rms \$975 + Bloomfield 2 BR home \$925 + BELLEVILLE 1 BR, \$450, h/w inc. 3 1/2 rms \$480, + 3 rms \$530, + Effc \$515 h/w inc. 1 BR gdn \$375 h/w inc. 3 BR \$600 + 3 1/2 gdn \$625 h/w inc. 3 rms \$650 + 5 rms \$875 h/w inc. Montell Agency 759-6900
NUTLEY 5 mod rms \$975 + Bloomfield 2 BR home \$925 + BELLEVILLE 1 BR, \$450, h/w inc. 3 1/2 rms \$480, + 3 rms \$530, + Effc \$515 h/w inc. 1 BR gdn \$375 h/w inc. 3 BR \$600 + 3 1/2 gdn \$625 h/w inc. 3 rms \$650 + 5 rms \$875 h/w inc. Montell Agency 759-6900
NUTLEY 5 mod rms \$975 + Bloomfield 2 BR home \$925 + BELLEVILLE 1 BR, \$450, h/w inc. 3 1/2 rms \$480, + 3 rms \$530, + Effc \$515 h/w inc. 1 BR gdn \$375 h/w inc. 3 BR \$600 + 3 1/2 gdn \$625 h/w inc. 3 rms \$650 + 5 rms \$875 h/w inc. Montell Agency 759-6900
NUTLEY 5 mod rms \$975 + Bloomfield 2 BR home \$925 + BELLEVILLE 1 BR, \$450, h/w inc. 3 1/2 rms \$480, + 3 rms \$530, + Effc \$515 h/w inc. 1 BR gdn \$375 h/w inc. 3 BR \$600 + 3 1/2 gdn \$625 h/w inc. 3 rms \$650 + 5 rms \$875 h/w inc. Montell Agency 759-6900
NUTLEY 5 mod rms \$975 + Bloomfield 2 BR home \$925 + BELLEVILLE 1 BR, \$450, h/w inc. 3 1/2 rms \$480, + 3 rms \$530, + Effc \$515 h/w inc. 1 BR gdn \$375 h/w inc. 3 BR \$600 + 3 1/2 gdn \$625 h/w inc. 3 rms \$650 + 5 rms \$875 h/w inc. Montell Agency 759-6900
NUTLEY 5 mod rms \$975 + Bloomfield 2 BR home \$925 + BELLEVILLE 1 BR, \$450, h/w inc. 3 1/2 rms \$480, + 3 rms \$530, + Effc \$515 h/w inc. 1 BR gdn \$375 h/w inc. 3 BR \$600 + 3 1/2 gdn \$625 h/w inc. 3 rms \$650 + 5 rms \$875 h/w inc. Montell Agency 759-6900
NUTLEY 5 mod rms \$975 + Bloomfield 2 BR home \$925 + BELLEVILLE 1 BR, \$450, h/w inc. 3 1/2 rms \$480, + 3 rms \$530, + Effc \$515 h/w inc. 1 BR gdn \$375 h/w inc. 3 BR \$600 + 3 1/2 gdn \$625 h/w inc. 3 rms \$650 + 5 rms \$875 h/w inc. Montell Agency 759-6900
NUTLEY 5 mod rms \$975 + Bloomfield 2 BR home \$925 + BELLEVILLE 1 BR, \$450, h/w inc. 3 1/2 rms \$480, + 3 rms \$530, + Effc \$515 h/w inc. 1 BR gdn \$375 h/w inc. 3 BR \$600 + 3 1/2 gdn \$625 h/w inc. 3 rms \$650 + 5 rms \$875 h/w inc. Montell Agency 759-6900
NUTLEY 5 mod rms \$975 + Bloomfield 2 BR home \$925 + BELLEVILLE 1 BR, \$450, h/w inc. 3 1/2 rms \$480, + 3 rms \$530, + Effc \$515 h/w inc. 1 BR gdn \$375 h/w inc. 3 BR \$600 + 3 1/2 gdn \$625 h/w inc. 3 rms \$650 + 5 rms \$875 h/w inc. Montell Agency 759-6900
NUTLEY 5 mod rms \$975 + Bloomfield 2 BR home \$925 + BELLEVILLE 1 BR, \$450, h/w inc. 3 1/2 rms \$480, + 3 rms \$530, + Effc \$515 h/w inc. 1 BR gdn \$375 h/w inc. 3 BR \$600 + 3 1/2 gdn \$625 h/w inc. 3 rms \$650 + 5 rms \$875 h/w inc. Montell Agency 759-6900
NUTLEY 5 mod rms \$975 + Bloomfield 2 BR home \$925 + BELLEVILLE 1 BR, \$450, h/w inc. 3 1/2 rms \$480, + 3 rms \$530, + Effc \$515 h/w inc. 1 BR gdn \$375 h/w inc. 3 BR \$600 + 3 1/2 gdn \$625 h/w inc. 3 rms \$650 + 5 rms \$875 h/w inc. Montell Agency 759-6900
NUTLEY 5 mod rms \$975 + Bloomfield 2 BR home \$925 + BELLEVILLE 1 BR, \$450, h/w inc. 3 1/2 rms \$480, + 3 rms \$530, + Effc \$515 h/w inc. 1 BR gdn \$375 h/w inc. 3 BR \$600 + 3 1/2 gdn \$625 h/w inc. 3 rms \$650 + 5 rms \$875 h/w inc. Montell Agency 759-6900
NUTLEY 5 mod rms \$975 + Bloomfield 2 BR home \$925 + BELLEVILLE 1 BR, \$450, h/w inc. 3 1/2 rms \$480, + 3 rms \$530, + Effc \$515 h/w inc. 1 BR gdn \$375 h/w inc. 3 BR \$600 + 3 1/2 gdn \$625 h/w inc. 3 rms \$650 + 5 rms \$875 h/w inc. Montell Agency 759-6900
NUTLEY 5 mod rms \$975 + Bloomfield 2 BR home \$925 + BELLEVILLE 1 BR, \$450, h/w inc. 3 1/2 rms \$480, + 3 rms \$530, + Effc \$515 h/w inc. 1 BR gdn \$375 h/w inc. 3 BR \$600 + 3 1/2 gdn \$625 h/w inc. 3 rms \$650 + 5 rms \$875 h/w inc. Montell Agency 759-6900
NUTLEY 5 mod rms \$975 + Bloomfield 2 BR home \$925 + BELLEVILLE 1 BR, \$450, h/w inc. 3 1/2 rms \$480, + 3 rms \$530, + Effc \$515 h/w inc. 1 BR gdn \$375 h/w inc. 3 BR \$600 + 3 1/2 gdn \$625 h/w inc. 3 rms \$650 + 5 rms \$875 h/w inc. Montell Agency 759-6900
NUTLEY 5 mod rms \$975 + Bloomfield 2 BR home \$925 + BELLEVILLE 1 BR, \$450, h/w inc. 3 1/2 rms \$480, + 3 rms \$530, + Effc \$515 h/w inc. 1 BR gdn \$375 h/w inc. 3 BR \$600 + 3 1/2 gdn \$625 h/w inc. 3 rms \$650 + 5 rms \$875 h/w inc. Montell Agency 759-6900
NUTLEY 5 mod rms \$975 + Bloomfield 2 BR home \$925 + BELLEVILLE 1 BR, \$450, h/w inc. 3 1/2 rms \$480, + 3 rms \$530, + Effc \$515 h/w inc. 1 BR gdn \$375 h/w inc. 3 BR \$600 + 3 1/2 gdn \$625 h/w inc. 3 rms \$650 + 5 rms \$875 h/w inc. Montell Agency 759-6900
NUTLEY 5 mod rms \$975 + Bloomfield 2 BR home \$925 + BELLEVILLE 1 BR, \$450, h/w inc. 3 1/2 rms \$480, + 3 rms \$530, + Effc \$515 h/w inc. 1 BR gdn \$375 h/w inc. 3 BR \$600 + 3 1/2 gdn \$625 h/w inc. 3 rms \$650 + 5 rms \$875 h/w inc. Montell Agency 759-6900
NUTLEY 5 mod rms \$975 + Bloomfield 2 BR home \$925 + BELLEVILLE 1 BR, \$450, h/w inc. 3 1/2 rms \$480, + 3 rms \$530, + Effc \$515 h/w inc. 1 BR gdn \$375 h/w inc. 3 BR \$600 + 3 1/2 gdn \$625 h/w inc. 3 rms \$650 + 5 rms \$875 h/w inc. Montell Agency 759-6900
NUTLEY 5 mod rms \$975 + Bloomfield 2 BR home \$925 + BELLEVILLE 1 BR, \$450, h/w inc. 3 1/2 rms \$480, + 3 rms \$530, + Effc \$515 h/w inc. 1 BR gdn \$375 h/w inc. 3 BR \$600 + 3 1/2 gdn \$625 h/w inc. 3 rms \$650 + 5 rms \$875 h/w inc. Montell Agency 759-6900
NUTLEY 5 mod rms \$975 + Bloomfield 2 BR home \$925 + BELLEVILLE 1 BR, \$450, h/w inc. 3 1/2 rms \$480, + 3 rms \$530, + Effc \$515 h/w inc. 1 BR gdn \$375 h/w inc. 3 BR \$600 + 3 1/2 gdn \$625 h/w inc. 3 rms \$650 + 5 rms \$875 h/w inc. Montell Agency 759-6900
NUTLEY 5 mod rms \$975 + Bloomfield 2 BR home \$925 + BELLEVILLE 1 BR, \$450, h/w inc. 3 1/2 rms \$480, + 3 rms \$530, + Effc \$515 h/w inc. 1 BR gdn \$375 h/w inc. 3 BR \$600 + 3 1/2 gdn \$625 h/w inc. 3 rms \$650 + 5 rms \$875 h/w inc. Montell Agency 759-6900
NUTLEY 5 mod rms \$975 + Bloomfield 2 BR home \$925 + BELLEVILLE 1 BR, \$450, h/w inc. 3 1/2 rms \$480, + 3 rms \$530, + Effc \$515 h/w inc. 1 BR gdn \$375 h/w inc. 3 BR \$600 + 3 1/2 gdn \$625 h/w inc. 3 rms \$650 + 5 rms \$875 h/w inc. Montell Agency 759-6900
NUTLEY 5 mod rms \$975 + Bloomfield 2 BR home \$925 + BELLEVILLE 1 BR, \$450, h/w inc. 3 1/2 rms \$480, + 3 rms \$530, + Effc \$515 h/w inc. 1 BR gdn \$375 h/w inc. 3 BR \$600 + 3 1/2 gdn \$625 h/w inc. 3 rms \$650 + 5 rms \$875 h/w inc. Montell Agency 759-6900
NUTLEY 5 mod rms \$975 + Bloomfield 2 BR home \$925 + BELLEVILLE 1 BR, \$450, h/w inc. 3 1/2 rms \$480, + 3 rms \$530, + Effc \$515 h/w inc. 1 BR gdn \$375 h/w inc. 3 BR \$600 + 3 1/2 gdn \$625 h/w inc. 3 rms \$650 + 5 rms \$875 h/w inc. Montell Agency 759-6900
NUTLEY 5 mod rms \$975 + Bloomfield 2 BR home \$925 + BELLEVILLE 1 BR, \$450, h/w inc. 3 1/2 rms \$480, + 3 rms \$530, + Effc \$515 h/w inc. 1 BR gdn \$375 h/w inc. 3 BR \$600 + 3 1/2 gdn \$625 h/w inc. 3 rms \$650 + 5 rms \$875 h/w inc. Montell Agency 759-6900
NUTLEY 5 mod rms \$975 + Bloomfield 2 BR home \$925 + BELLEVILLE 1 BR, \$450, h/w inc. 3 1/2 rms \$480, + 3 rms \$530, + Effc \$515 h/w inc. 1 BR gdn \$375 h/w inc. 3 BR \$600 + 3 1/2 gdn \$625 h/w inc. 3 rms \$650 + 5 rms \$875 h/w inc. Montell Agency 759-6900
NUTLEY 5 mod rms \$975 + Bloomfield 2 BR home \$925 + BELLEVILLE 1 BR, \$450, h/w inc. 3 1/2 rms \$480, + 3 rms \$530, + Effc \$515 h/w inc. 1 BR gdn \$375 h/w inc. 3 BR \$600 + 3 1/2 gdn \$625 h/w inc. 3 rms \$650 + 5 rms \$875 h/w inc. Montell Agency 759-6900
NUTLEY 5 mod rms \$975 + Bloomfield 2 BR home \$925 + BELLEVILLE 1 BR, \$450, h/w inc. 3 1/2 rms \$480, + 3 rms \$530, + Effc \$515 h/w inc. 1 BR gdn \$375 h/w inc. 3 BR \$600 + 3 1/2 gdn \$625 h/w inc.

THERE'S NO PLACE LIKE HOME

180 Centre St.
Nutley, N.J. 07110
667-3440

GEORGE E. MACMUNN CO.

REALTORS

100 Woodport Road
Sparta, N.J. 07871
729-8727



NUTLEY — Nestled in the PARK on 50x260 lot, 6 room Ranch w/frpl, wide plank floors, 2 baths, formal DR w/beautiful views of park, screened rear porch for private outdoor living. ASKING \$214,900.



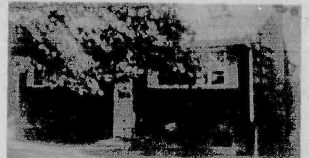
NUTLEY — JUST LISTED in Heart of Nutley Park — beautiful colonial, natural trim throughout, 3 BIG BR's, oversized formal DR, eat-in Kitch. w/breakfast rm., encl. sunroom, att. gar. ASKING \$194,500.



ask
us...



NUTLEY — JUST LISTED — Lovely quiet area yet close to everything, 3 BR's, 1½ baths, maint. free exterior, natural trim, 1 car garage. ASKING \$166,500.

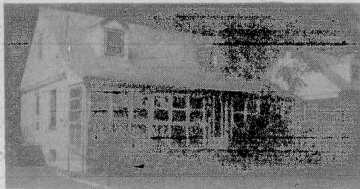


LAKE MOHAWK — SPARTA — ASKING \$139,900. Priced below market value. Just 18 years young, private 127x115 park-like yard w/views of lake, 3 BR's, 1½ baths, 24x16 Fam. Rm., huge deck, excellent cond. Real Value Here!!!

Property of the Week

Priced To Sell

NUTLEY CAPE
JUST REDUCED TO \$135,000



YANTACAW SCHOOL DISTRICT, CLOSE TO NY TRANS.

MCL No. 0777

103 PARK STREET
MONTCLAIR 783-1500



SCHLOTT

The Extra Effort People

OUTSTANDING NUTLEY SPECIALS

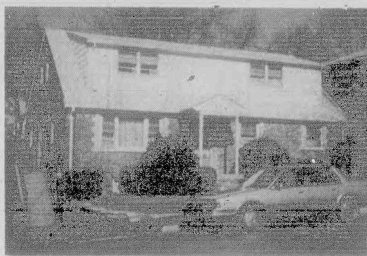
Asking \$169,000 - Make Offers
Mother/Daughter possibility.
8 rooms, 2 baths. Move-in condition.

Asking \$155,000 - Make Offers.
5 rooms and bath in fine condition. Expansion attic for 2 rooms.

Also Brookdale Bloomfield
Asking \$179,000 — Make Offers.
6 rooms, 2 full baths, 1st floor family room, glass enclosed porch. Two short blocks to school and N.Y. bus.

EVERYONE KNOWS

GEORGE T. BOWES
YOUR NUTLEY REALTOR SINCE 1933
681 FRANKLIN AVE. NUTLEY 667-3376



BELLEVILLE 2-FAMILY

Beautiful custom built 2-Family home bordering Flora Louden Park in Nutley, 3 BR, LR, Kit, DR on first, 2 BR, LR, Kit, DA on 2nd. Large basement w/frpl. & kitchen. Just reduced to \$249,000

Century 21
STANFORD AGENCY

86 Union Ave.
Nutley, N.J.
235-9000

EACH OFFICE INDEPENDENTLY OWNED AND OPERATED

FISL
GSL
Stafford
SLS
PLUS

STUDENT LOAN
RAYOFF PROGRAM
For
Defaulted
Student Loans

FISL
GSL
Stafford
SLS
PLUS

If you're in default on a guaranteed student loan ... you may be eligible for a special program that lets you pay it back without penalty or collection charges. (These charges can amount to as much as 35% on your total debt.)

But you have to act now ... to take advantage of this special program, you have to pay your loan in full by August 31, 1990.

For further information ... call the guarantee agency that holds your loan, or call the U.S. Department of Education's toll-free number:

Federal Student Aid Information Center: (800) 333-INFO

The Home Front

By Nina Kaeser



Did You Know??

New homes today are bigger and better than ever. In 1980, the typical new house had 1,740 square feet; that was up to 2,035 by 1989. Some 88 percent of the homes feature air conditioning now, up from 63 percent; 44 percent have 2½ baths or more, up from 25 percent.

Aluminum siding can be painted successfully; some paints are designed for the job. It's vital to scrub the siding clean before applying paint.

White-on-white is a successful decorating theme in any kind of room, modern or traditional. Mix different textures to keep it interesting and add a few non-white details like wood, gilt and greenery.

Rubber roofing is more durable than asphalt on a flat roof and less likely to leak. Rising oil prices have now made rubber competitive in price with asphalt.

The easier way to paint handrails and pipes is with a painter's mitten, made of the same fuzzy cotton fabric that covers rollers.

The easier way to market your home-for-sale is with expert help. List your property with the real estate pros at Century 21 Stanford Agency, 86 Union Ave., Nutley. 235-9000.

ADVERTISE!

REALTORS

We do our homework



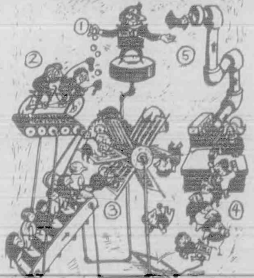
A student. A researcher. An explorer. These terms describe today's Realtor.

Today's Realtor studies home buying trends, researches housing information, and explores current financing packages.

Why? To give you the most up-to-date information about the real estate market, so you can make educated buying decisions.

CALL YOUR REALTOR TODAY!

The Advertising Machine



How advertising really works: 1) Sam the retailer pays the newspaper ad rep who 2) gets the advertising to the reader who 3) reads Sam's ad and thus are sent to Sam's store to buy some goods.

If you wish to reap the rewards, just as Sam has, call your advertising representative today at 667-2700!

ORECHIO PUBLICATIONS & TV



CAN CAN SALE

ShopRite has savings from

A TO Z

FREE

Join ShopRite's New
PRICE PLUS®
Club TodayINSTANT
AUTOMATIC
SAVINGS!Complete Details at
Participating ShopRite's

IN OIL OR WATER
**Bumble Bee
Chunk Light Tuna**

CASE OF 48
23.88
4 1.99
6 1/2-oz. cans



ALL METHOD GRIND (EXCEPT DECAF)
**Chase And
Sanborn Coffee**

CASE OF 24
23.76
.99
11 1/2-oz. can



VAC PACK 12 OZ. OR REG. OR NO SALT
ADDED CREAM STYLE OR
**Whole Kernel
ShopRite Corn**

CASE OF 24
8.00
3 1.00
1-lb. cans



REGULAR OR SPECIAL REQUEST
**Campbell's
Tomato Soup**

CASE OF 48
11.88
4.99
10 1/2-oz. cans



ShopRite ASSORTED VARIETIES
**Sweet Peas or
Green Beans**

CASE OF 24
9.94
4.99
15 1/2-oz. cans



ShopRite
**Pork & Beans
or Sauerkraut**

CASE OF 48
11.88
4.99
1-lb. cans



CRUSHED, PUREE OR IN SAUCE
**Tuttorosso
Tomatoes**

CASE OF 24
11.76
49
1-lb. 13-oz. can



GRAPE, ORANGE OR RED BERRY FRUIT PUNCH
**Sunny Delight
Sun Sip Drink**

CASE OF 12
5.98
49
1-qt. 1.14 oz. can



REGULAR OR NATURAL
**ShopRite
Apple Sauce**

CUTS & TIPS
**ShopRite
Asparagus**

CUT, SLICED OR WHOLE
**ShopRite
Beets**

WHY PAY MORE?
**ShopRite
Chicken Broth**

CHUNK, IN OIL OR WATER
**Bumble Bee
White Tuna**

WHY PAY MORE?
**Contadina
Tomato Sauce**

ASSORTED VARIETIES
**Amore
Cat Food**

KLEENEX SUPERATHIN EK LG
**Huggies
Diapers**

REG. OR HOMESTYLE PURE PREMIUM
**Tropicana
Orange Juice**

ASST. VAR. AXEL ROOD
**Cottage
Cheese**

WHY PAY MORE?
**Wilson
Meat Franks**

WHY PAY MORE?
**Armour Sliced
Bacon**

ShopRite STORE SLICED
**American
Cheese**

16-OZ. ROUND, 18-OZ. SQUARE
OR 18-OZ. OVAL
**Superseal
Food Savers**

ALL VARIETIES
**Aim
Toothpaste**

CHOCOLATE ROYALE, READY
TO USE DIET DRINK
**Ultra
Slim+Fast**

RIB CUT PORK ROAST OR
**Center Cut
Pork Chops**

MEATY RIB PORTION
Pork Loin For BBQ

U.S.D.A. CHOICE BEEF LOIN, WITENDERLOIN
Sirloin Steak

U.S.D.A. CHOICE BEEF LOIN, TAILLESS STEAK
Porterhouse or T-Bone

VERY LOW IN SODIUM
**Eastern
Potatoes**

VITAMIN C
Firm Ripe Tomatoes

LOW CALORIES, 30 SIZE
Crisp Celery

VITAMINS A & C
Green Peppers



REGULAR OR PLUS
**ShopRite
Tomato Juice**

CHICK PEAS, PINK, SM. PINTO, WHITE, CANNELLINI OR
**ShopRite Red
Kidney Beans**

IN LIGHT SYRUP, YELLOW CLUNG, SLICED
**Farm Flavor
Peaches**

WHY PAY MORE?
**Argo
Spinach**

ASSORTED VARIETIES
**Pillsbury
Frostings**

CHICK NOOD. OK OF MEAT, TOMATO, VEGETABLE
WHEAT OR RYE, VEGETABLE
**ShopRite
Soup**

ASSORTED VARIETIES
**9 Lives
Cat Food**

ORIGINAL OR LEMON
**ShopRite Liquid
Detergent**

MAKES 20 QUARTS
**Nestlea Iced
Tea Mix**

PIECES & STEMS
**ShopRite
Mushrooms**

WHY PAY MORE?
**Icy Point
Red Salmon**

WHY PAY MORE?
**Nestle
Chocolate Quik**

ASST. VAR. DRY ROASTED, HONEY ROASTED OR
**Planters
Cocktail Peanuts**

ASSORTED VARIETIES
**Planters
Snacks**

ASST. VAR. GREEN BEANS, SPINACH, PEAS &
CARROTS, BEETS, CORN OR MIXED
**Del Monte
Vegetables**

WHY PAY MORE?
**ShopRite
Tomato Sauce**

LOIN PORTION, 9-11 CHOPS
**Pork Chop
Combination**

ANY SIZE PKG., PERDUE WHOLE WITH BONES
Chicken Legs

ANY SIZE PKG., PERDUE CHICKEN
Drumsticks or Thighs

FRESH AMERICAN, BLADE CUT
Shoulder Lamb Chops

GOOD SOURCE OF POTASSIUM
**Yellow Ripe
Bananas**

VITAMIN C 48 SIZE, RED OR WHITE
Florida Grapefruit

WASH, STAI EXTRA FANCY 100 SIZE
Red Delicious Apples

PRODUCT OF SPAIN
Imported Clementines



ITALIAN STYLE
**Tuttorosso
Tomatoes**

ASST. VAR. (PLUS DEP. WHERE REQ.)
**C & C 6 Pk.
Seltzer**

ORIGINAL OR ITALIAN STYLE
**Contadina
Tomato Paste**

ShopRite ASST. VAR. REG. OR NO SALT ADDED
**White Potatoes
or Carrots**

ASSORTED VARIETIES
**Weight Watchers
Soups**

ShopRite Grade 'A'
**Mixed
Vegetables**

WHY PAY MORE?
**S.O.S.
Soap Pads**

RED OR PASSION
**Hawaiian
Punch**

PACIFIC
**Fresh Fillet
of Dover Sole**

FROZEN & THAWED
**Medium White
Shrimp**

REGULAR OR SANDWICH
**Country Hearth
White Bread**

ASST. VAR. REG. OR LIGHT
**Dolly Madison
Ice Cream**

ASST. VAR. HOMESTYLE FROZEN
**Swanson
Entrees**

We Save You Money In Every Aisle

ShopRite Does it RIGHT!

VALUABLE COUPON
WITH THIS COUPON
**Ultra Slim+Fast
Diet Drink**
16.99
019960
ENTER
SAVE 6.77

ShopRite Coupon
WITH THIS COUPON
**ShopRite
Tomato Sauce**
4.99
019840
ENTER
SAVE .35

ShopRite Coupon
WITH THIS COUPON
**24-Pk. Classic
Coke or Sprite**
4.99
019850
ENTER
SAVE .50

Prices effective in New Jersey, North of Trenton (ex. Monticello, N.J.) including Kingston and E. Windsor, N.J. & Rockland & Richmond Counties, N.Y. In order to assure a sufficient supply of sale items for all our customers, we must reserve the right to limit purchase to 4 of any sale items, except where otherwise noted. Not responsible for typographical errors. Items sold to other retailers or wholesalers. Advertisements do not necessarily represent items on sale, it is for display purposes only. Sunday sales subject to local blue laws. Copyright WAKEFERN FOOD CORPORATION, 1991. Effective Sun., Jan. 13 thru Sat., Jan. 19, 1991. Plus Day, Where App.